

WILSONWERKS ARCHIVES

This camera manual is for reference and historical purposes, all rights reserved.

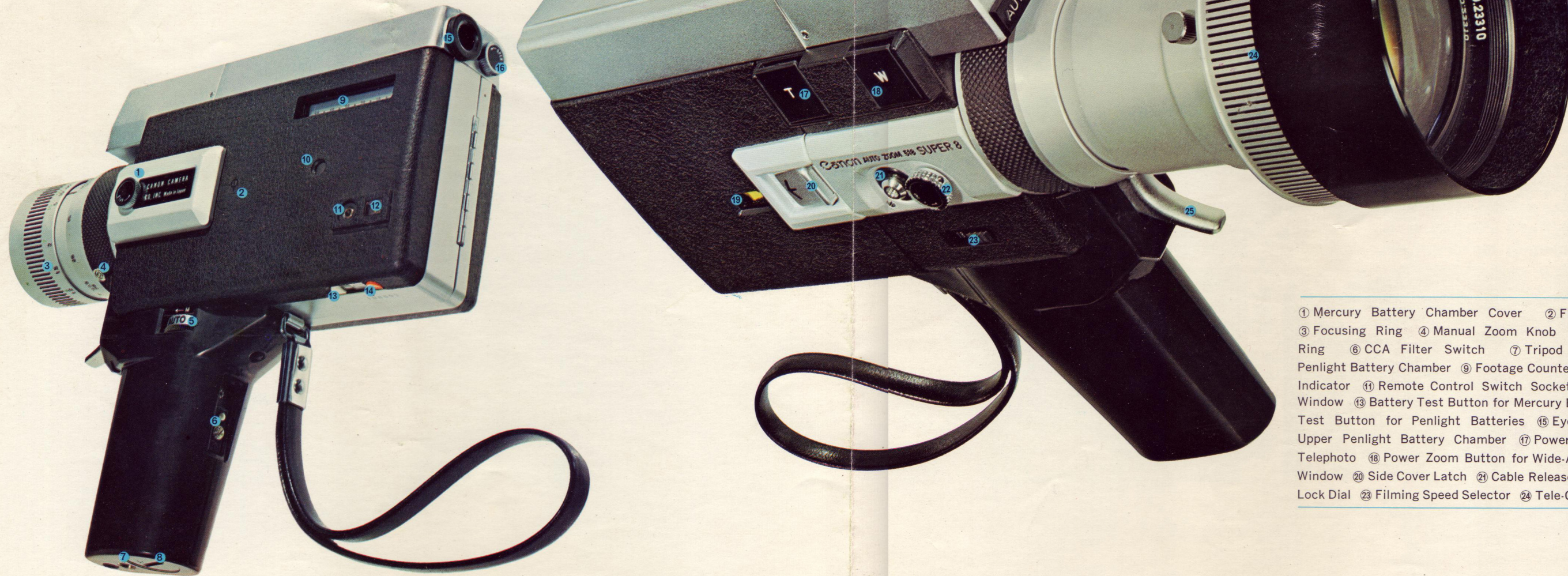
This cover page is copyrighted material. This document may not be sold or distributed without the express consent of the publisher.

©2008-2025 wilsonwerks Llc



**Canon SUPER 8
AUTO ZOOM 518**

25 great features
count them off for yourself!

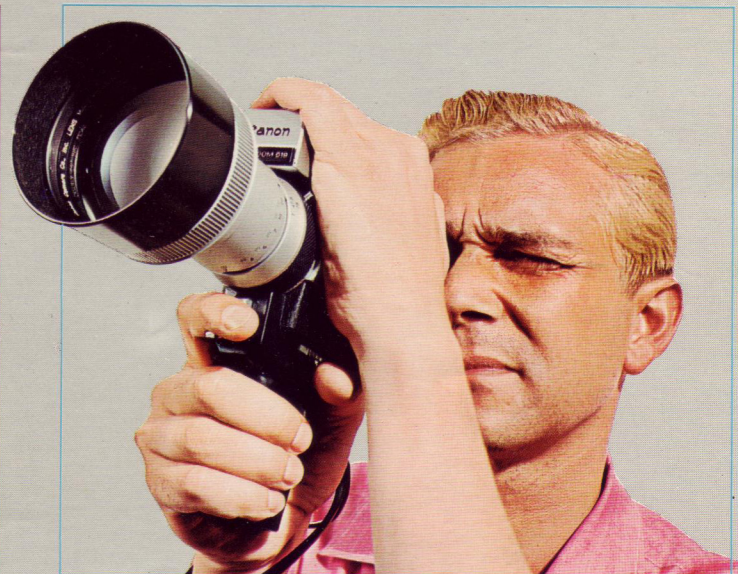


- ① Mercury Battery Chamber Cover
- ② Film Plane Indicator
- ③ Focusing Ring
- ④ Manual Zoom Knob
- ⑤ Aperture Control Ring
- ⑥ CCA Filter Switch
- ⑦ Tripod Socket
- ⑧ Lower Penlight Battery Chamber
- ⑨ Footage Counter
- ⑩ Film Transport Indicator
- ⑪ Remote Control Switch Socket
- ⑫ Battery Tester Window
- ⑬ Battery Test Button for Mercury Batteries
- ⑭ Battery Test Button for Penlight Batteries
- ⑮ Eyepiece
- ⑯ Knob for Upper Penlight Battery Chamber
- ⑰ Power Zoom Button for Telephoto
- ⑱ Power Zoom Button for Wide-Angle
- ⑲ Film Type Window
- ⑳ Side Cover Latch
- ㉑ Cable Release Socket
- ㉒ Shutter Lock Dial
- ㉓ Filming Speed Selector
- ㉔ Tele-Converter
- ㉕ Trigger

Canon SUPER 8 AUTO ZOOM 518

Every feature you've ever wanted and a few you've never even thought about! That about sums up the Canon Auto Zoom 518. Naturally we've employed the easy-to-load Super 8 system which makes film handling so simple. Then too we thought about lenses—the Canon Auto Zoom 518 has *three* but they're all rolled into *one* actually. It's a fast and sharp F1.8 five times zoom lens with a range of 9.5-47.5mm giving Wide-angle, Telephoto and Zoom effects. Three other points we know you will appreciate are: Single-lens reflex viewing, automatic exposure control through-the-lens and microprism screen rangefinder. And the features you hadn't thought

about? Well there is the fast filming speed facility—it means you can put those fascinating slow motion effects into your home movies, and then the fade-in fade-out capability. Furthermore, the zooming range of the camera can be extended to 15.6-78mm with the optional Tele-Converter yielding 8-times combined zoom power. Really, with features like these your family and friends will assume they're watching a professional production when you screen your movies at home. Their assumption will be very near the truth because the 518 gives a touch of professionalism to all home movies.



Technical Data

Type: 8mm movie camera using Super 8 film cartridge.
Frame Size: 4 x 5.4mm.
Lens: F1.8 with zooming range of 9.5-47.5mm. 11-component, 14-element construction. Zoom ratio, 1:5. Zooming by rotation of lens barrel. Inner diameter, 48mm. Outer diameter, 50mm. Zoom range can be extended to 15.6-78mm with optional Tele-Converter.
Viewfinder: Single-lens reflex type combined with microprism screen rangefinder. Contains f/stop scale and over/under exposure warning marks. Eyepiece adjustable to eyesight of photographer.
EE Mechanism: Automatic aperture setting coupled to film speed and filming speed. Aim camera at subject for correct exposure.
Exposure Meter: Through-the-lens system CdS meter measures light passing through taking lens. Powered by two 1.3v M20 (#625) mercury batteries.
Light Measuring Range: The entire range between ASA 160 f/1.8 at 18 fps and ASA 16 f/16 at SLOW MOTION (approx. 40 fps).
Film Speed: Automatically set with insertion of film cartridge. With tungsten type film, ASA 25-160 (DIN 15-23). With daylight film, ASA 16-100 (DIN 13-21).
CCA Filter: Built in. Corrects colors of tungsten type film when used in daylight. Automatically cancelled on insertion of daylight type film cartridge or manually from outside.
Filming Speed: 18 fps and SLOW MOTION.
Shutter Release: Released by turning the shutter lock dial and pulling the trigger.
Manual Control of Aperture: Manual operation is possible by releasing the EE mechanism. Aperture is electrically coupled with the aperture control ring. Fade-ins and fade-outs from/to f/32 are possible with aperture control ring and an ND filter.
Power System: Film drive and power zooming operated by two micro-motors. Entire zooming is done in approximately 6 seconds.
Power Source: Four 1.5v penlight (size AA) batteries. Sufficient power for 10 cartridges of film under normal temperature.
Battery Tester: Built in. Indicates power levels of mercury and penlight batteries.
Manual Zooming: Performed by manual zoom knob. Revolving angle of 100°.
Footage Counter: Counts up to 50 feet. Automatically resets when the cartridge is taken out.
Film Transport Indicator: For checking film advancement.
Release Sockets: For remote control and cable release.
Trigger Grip: Fixed type.
Accessories: C-8 Tele-Converter 1.6x, Lens Hood S-50, Remote Control Switch 3, 48mm Filters (Screw-in type), 48mm Close-Up Lens 450, 50mm Lens Cap, Viewfinder Cover 2, Release 5, Carrying Case.
Size: 206 x 187 x 55mm (8 1/8" x 7 3/8" x 2 1/8").
Weight: 1,150 grams (2 lb. 8 oz.).

Subject to alterations.

CANON CAMERA CO., INC.

3 Ginza 5-chome, Chuo-ku, Tokyo, Japan

CANON U.S.A., INC.

550 Fifth Avenue, New York, New York 10036, U.S.A.

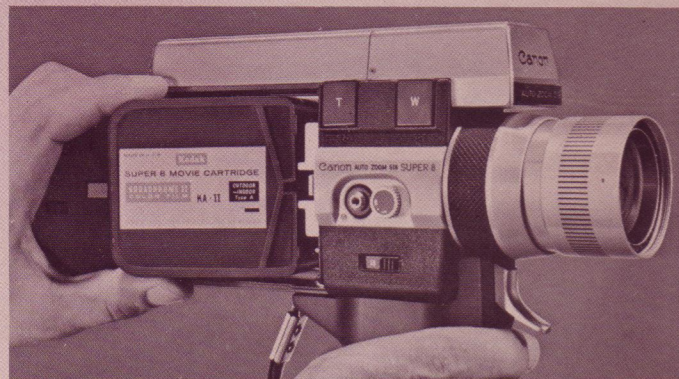
CANON S.A. GENEVE

1, Rue de Hesse, 1204 Geneva, Switzerland

CANON LATIN AMERICA, INC.

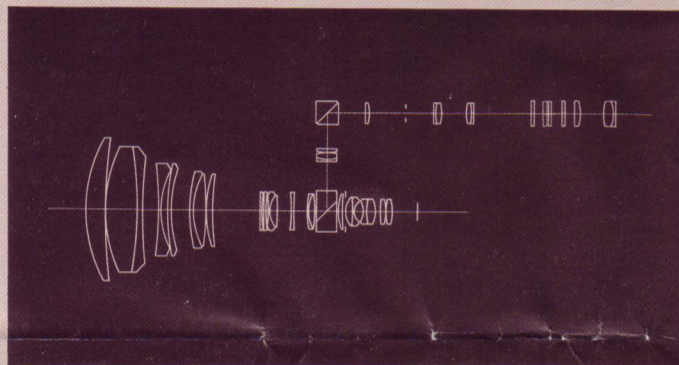
Apartado 7022, Panama 5, Panama

...Presents
the Wonderful World
of Moving Pictures



Super 8 Cartridge System

Super 8 cartridges can be loaded quickly and easily without the trouble of threading the film's end through the film gate. As the cartridge is slipped in, the film speed (ASA/DIN) is set automatically. The cartridges are light-sealed, they can be loaded even in bright sunlight and the film frame yields a 50% larger picture size. The full 50-foot of film can be run through without flipping over the cartridge halfway and sound can be added if required. Furthermore, a Color Conversion A filter is built into the camera for use with tungsten film in daylight. It can be cancelled out by the touch of a switch when filming under artificial light.



Fast and Sharp 5-times Zoom Lens

Forget about buying Wide-angle, Telephoto and Zoom lenses—the 518's sharp F1.8 five times zoom lens is all these in one! Its superior all-round performance is the result of Canon's technology and experience in the field of precision optics. Ease of handling, like all the controls on the 518, is a big feature—focus just once and the camera stays in focus all the time through wide-angle, telephoto and zoom shots between the range of 9.5-47.5mm. Resolving power of the lens is great and color balance perfect thanks to a Canon exclusive...Spectra-Coating for the lens.

Powerful Telephoto Capability with Tele-Converter

Fitting the optional Tele-Converter 1.6x to the 518's zoom lens converts the zooming range from 9.5-47.5 mm to 15.6-78mm—that's a mighty 8-times combined zoom power. Dramatic super-telephoto effects previously only possible with expensive professional equipment, are now within the reach of all home movie makers.



Powered System for Zoom and Film Drive

Two highly efficient micromotors drive the zoom and filming mechanisms electrically by means of four penlight batteries. Squeeze the trigger whenever you want to shoot—crank winding between shots is eliminated. Zooming can also be smoothly performed at regulated speed by fingertip touch on the "T" (Telephoto) and "W" (Wide angle) zoom buttons. A built-in battery tester indicates not only the strength of the penlight batteries for the power system but also of the mercury batteries used for the CdS meter. There is a film transport indicator to show the proper film advance. And a 3-way dial switch (1) locks the trigger release and the power circuit, (2) unlocks for shooting or (3) fixes the mechanism for continuous running.



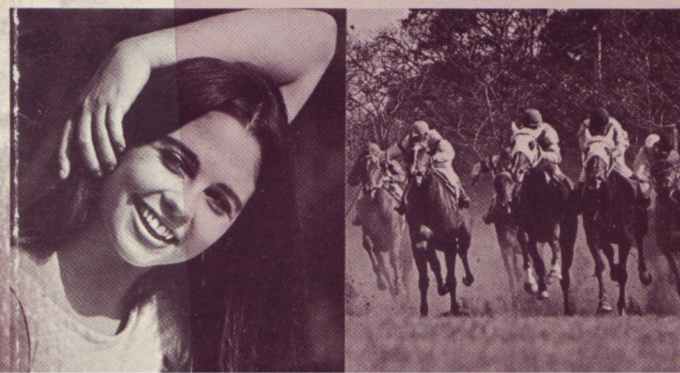
SLR Viewing and Automatic Exposure Control

The single-lens reflex type viewfinder affords an excellent picture area allowing the user to see, without parallax, clearly and exactly what is being recorded on the film as it is being shot. Focusing is easy yet extremely accurate with the microprism screen rangefinder which brings the subject into razor sharp focus. And the viewfinder's eyepiece is adjustable to suit individual eyesight—once it's set it can be forgotten. Exposure calculations are performed automatically through-the-lens and here again the emphasis is on accuracy. Just aim the camera at the subject for correct exposure. There is no deviation between actual light and light measured by the CdS meter because it's the same light that has passed through the taking lens to expose the film.



Manual Aperture Control for Advanced Techniques

To allow the photographer to give a touch of professionalism to his home movies, the Canon Auto Zoom 518 is equipped with a manually controllable aperture for high-key, low-key effects and fading techniques. By turning the aperture control ring, any desired f/stop can be obtained. Using a Neutral Density filter in combination with the aperture control ring, fade-ins from and fade-outs up to f/32 can be achieved. Fading techniques are used to show the elapse of time or a change in scene, for example, when the scene on the stage changes at the end of a theme.



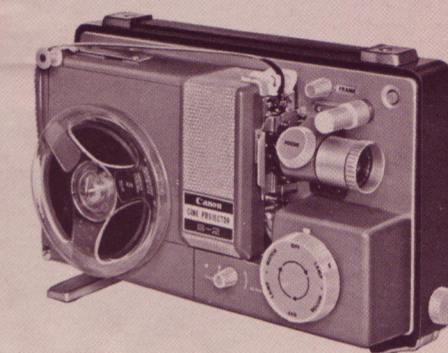
Choice of Filming Speeds

Another professional-like feature of the Canon Auto Zoom 518 is the provision of a high shooting speed—shift the filming speed selector to "SLOW MOTION". It gives those fascinating slow motion sequences you have seen on the screen at your local movie theater. Slow motion allows careful analysis of movement such as analyzing the movements of athletes or following a racing car as it moves across your field of vision, it also prevents blurring during panning. "SLOW MOTION" is of course in addition to the 518's standard filming speed of 18 fps normally used with Super 8 film.



Functional New Design for Optimum Operation

Every single part of the Canon Auto Zoom 518 has been designed with ease of handling and operation in mind. The hand grip for example, with its conveniently placed trigger release, lets the user hold the camera firmly for long periods without tiring. A safety strap slips over the wrist to prevent accidental dropping and switches, buttons, indicators have all been set out in optimum order—no fumbling or grumbling because you can't find the right button or switch in the middle of filming—everything falls readily to hand as and when it is needed.



Canon Cine Projector S-2

... and to screen those wonderful pictures that you have shot, here is our versatile Canon Cine Projector. It's versatile because it projects not only Super 8 film but also the Single 8 and the regular 8mm film too. Versatility is also demonstrated by the projector's ability to accept six different line voltages—100, 115, 125, 160, 220, or 240 volts. You'll delight in screening your movies with the Canon Cine Projector, it's so easy to use—fully automatic film threading and rewinding. Insert the film end into the projector, turn the switch, and the film will run completely through and rewind with no need for resetting or touching any other switches. Fast F1.5 15-30mm Zoom lens, adjustable projecting speeds, retractable power cord, small screen built into the side cover and a host of other features are yours with the Canon Cine Projector.

Canon SUPER 8 AUTO ZOOM 518