

WILSONWERKS ARCHIVES

This camera manual is for reference and historical purposes, all rights reserved.

This cover page is copyrighted material. This document may not be sold or distributed without the express consent of the publisher.

©2008 wilsonwerks Llc

The Ultimate in Image Quality

Canon

SLR INTERCHANGEABLE LENSES



English Edition



One of the most attractive features of an SLR (Single-Lens-Reflex) camera is its lens interchangeability. An SLR is not really a SINGLE LENS reflex at all, because it can use many different lenses of various focal lengths. And one of the added benefits of owning a Canon 35mm SLR is that it accepts the more than thirty Canon lenses presently available.

From the 7.5mm Fish-Eye which "sees" a full 180° to the 1200mm super telephoto, having a picture angle of only 2°, any photographic image in the mind's eye can be rendered with absolute precision. A unique "Tilt and Shift" wide-angle lens not only can correct perspective distortion in pictures of tall buildings but also can increase depth of field without a change in f/stop. An aspherical 55mm f/1.2 lens can be used wide-open without the slightest trace of spherical aberration or flare. Two macro

lenses, a 50mm focusing to 9.2 inches (8.4 inches with the Life-Size Adapter) and a 100mm for use with bellows, reveal the infinite beauty of the world in close-up. In addition there are three zoom lenses and three ultra-sharp and compact fluorite telephotos.

Each lens is highly corrected for all types of aberrations and is capable of producing pictures with outstanding resolution. To significantly reduce ghost images and flare, most lenses are now multilayer coated by Canon's exclusive process, called "Super Spectra Coating."

Canon interchangeable lenses offer the serious photographer the ultimate in sharpness, contrast, and color balance. If you're interested in obtaining the best possible images in 35mm photography, then Canon lenses are for you.

Cover: Andy Barker. FD 20mm f/2.8SSC, 1/125 sec' at f/8, ASA25.





Andy Barker. Fish-Eye 7.5mm f/5.6 S.S.C., 1/125 sec. at f/8, ASA 25.

Canon Fish-Eye Lenses

Canon fish-eye lenses can capture the whole world in front of you — everything to the top and bottom, right and left is taken in. Equidistant projection over their entire 180° angle of view means that they are ideally suited for aerial, astronomical, or azimuth photography. And their compact size allows them to fit easily into any gadget bag. Moreover, retrofocus allows viewing and composing with the mirror in the normal position.

The Fish-Eye 7.5mm f/5.6 S.S.C. is a fixed focus lens producing a circular image. It tucks its entire 180° angle of view into a 23mm diameter circle within the normal 24mm x 36mm picture frame. The 7.5mm has 11 elements in 8 groups and 6 built-in filters on a rotating turret, all in the size of a standard SLR lens. Use this extraordinary lens to shoot an entire afternoon sky, or everyone in a huge crowd of people, or even the inside of a tiny room. Manual diaphragm and Super Spectra Coating.

The Fish-Eye FD 15mm f/2.8 S.S.C. is a frame-filling fish-eye lens which has a large maximum aperture of f/2.8 and focuses down to one foot. With 10 elements in 9 groups and 4 built-in filters on a rotating turret, it still is compact and light in weight. It also sports a special flower-shaped hood which regulates light entering the lens by blocking out harmful side rays. The FD 15mm is incredibly sharp over its entire 180° angle of view even at the corners of the frame, making it a perfect special effects lens for both the amateur and professional. Automatic diaphragm and Super Spectra Coating.



Canon Super Wide-Angle Lenses

Canon super wide-angle lenses have great depth of field, wide angles of view, and tend to exaggerate the size of objects close to the lens. They are especially useful in creating intentional perspective distortion, capturing panoramic views, or photographing in confined areas. All Canon super wide-angle lenses are designed with the special Floating System to eliminate aberrations in close-up photography. Since focusing a Canon super wide-angle lens changes the distance between the front and rear lens groups, spherical aberration from the front group is constantly compensated for in the rear group producing a distortion-free image. The **FD 17mm f/4 S.S.C.** lens is a super wide-angle having an enormous 104° angle of view without rectilinear distortion. The Floating System in this 11 element—9 group lens eliminates poor resolution in close-up photography. The FD 17mm has sharp definition from corner to corner throughout its entire focusing range from .25m (10 ins.) to infinity.

The **FD 20mm f/2.8 S.S.C.** lens has 10 elements in 9 groups and uses the Floating System to produce crystal-clear images even at its minimum focusing distance of .25m (10ins.). Since the FD 20mm has such a large aperture and a huge 94° angle of view, it is ideal for super wide-angle available light photography in small dimly lit interiors. Sweeping perspective and a bright image make it easy to photograph any subject with this sharp and compact lens.

The **FD 24mm f/2.8 S.S.C.** is a fast super wide-angle lens with an 83° angle of view. It has 9 elements in 8 groups, and takes the same size 55mm screw-in filters as do most other FD lenses. The FD 24mm incorporates the Floating System to prevent aberrations when shooting at minimum focusing distance. Multilayer Super Spectra Coating eliminates all trace of flare or ghost images. The FD 24mm is suited for any type of super wide-angle photography and is easy to focus in dim light. It gives high contrast and good resolution even when used at full aperture.



Andy Barker. FD 24mm f/2.8 S.S.C., 1/125 sec. at f/5.6, ASA 25.





Kenzo Kuroi. FD 35mm f/2 S.S.C. 1/2sec. at f/16, ASA 64, with flash.

Canon Wide-Angle Lenses

Canon wide-angle lenses have added depth of field and slightly larger angles of view as compared with standard lenses making them ideal for candid photography and snapshots. Crowds, large objects, and landscapes are also good subjects for the larger than normal angle of view of these lenses.

The **FD 28mm f/3.5 S.C.** is a wide-angle lens with a 75° angle of view. With 6 air-spaced elements, it is the lightest and most compact super wide or wide-angle Canon lens. You can carry this lens on your camera at all times and prefocus it for quick candid shots. Or use it in the studio to create shots with extra impact.

The **FD 28mm f/2.8 S.C.** is a reasonable priced wide-angle lens with considerable depth of field, making it perfect for candid photography. It has very high resolving power, contrast and brightness, and is compact and light-weight for easy handling. Good enlargements can be made even at high magnifications. Spectra Coating assures excellent color performance.

The **FD 35mm f/3.5 S.C.** is a wide-angle lens having 6 air-spaced elements and a 64° angle of view. It is very compact and inexpensive and is a perfect lens for snapshot photography. It produces sharp pictures from center to edges throughout its entire focusing range even at maximum aperture. The FD 35mm f/3.5 has a CAT system pin which couples with a Flash-Auto Ring and the Speedlite 133D or 500A for automatic flash control.

The **FD 35mm f/2 S.S.C.** is Canon's fastest wide-angle lens. It features an extra bright maximum aperture of f/2 for easy-to-focus wide-angle photographs under all kinds of lighting conditions. The FD 35mm f/2 is also equipped with a special built-in pin which couples with a Flash-Auto Ring and the Canon Speedlite 133D or 500A for CAT (Canon Auto Tuning) automatic flash control.



Canon Standard Lenses

Canon standard lenses record any photographic subject almost the way the eye sees it, with natural perspective. This means that snapshots of people or landscapes look true to life. The standard lenses have focal lengths of either 50mm or 55mm and an angle of view from 43° to 46°. Large maximum apertures, small size, and normal angles of view make them popular general purpose lenses. The **FD 50mm f/1.8 S.C.** is an inexpensive, light-weight and very compact lens having 6 elements in 4 groups. It has a 46° angle of view, takes 55mm filters and has a built-in CAT system pin for automatic flash Photography.

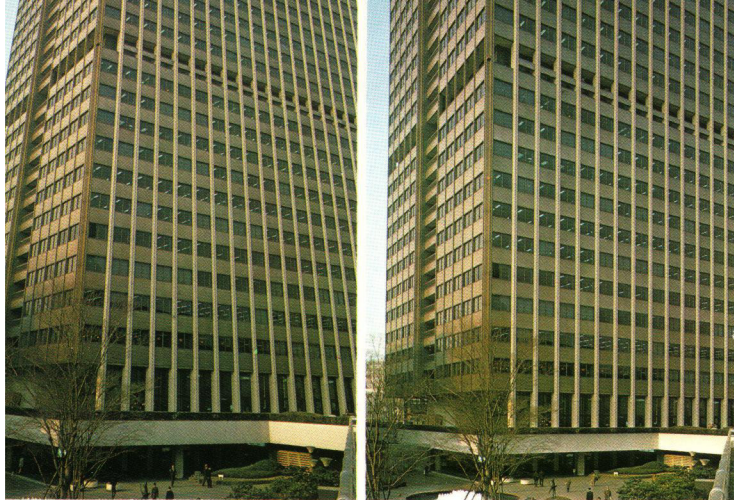
The **FD 50mm f/1.4 S.S.C.** is a brighter and faster 50mm lens which usually comes as standard equipment on a new Canon camera. It has Super Spectra Coating, a CAT system pin, takes 55mm filters, and is sharp as a razor.

The **FD 55mm f/1.2 S.S.C.** lens has the largest aperture available in the FD series and is perfect for available light shooting in extremely dim light. Although it is similar in design and performance to the FD 50mm f/1.4, its faster speed provides a brighter and easier to focus image in the viewfinder. It has correction for coma and spherical aberration, plus Super Spectra Coating to eliminate ghost images and flare.



Mitsuaki Shiotsubo. FD 50mm f/1.4 S.S.C., 1 sec. at f/8, ASA 64.





Canon Photo Production Section. TS 35mm f/2.8 S.S.C., 1/60sec. at f/8, ASA 25.

Canon Special Lenses

Canon makes special lenses to meet the challenge of photographing difficult subjects. Close observations of nature, oblique shots of tall buildings, or available light shots in dim illumination all require lenses especially designed to produce unusual and striking pictures. Canon's sophisticated lens design and manufacturing techniques assure that all special lenses are as technically perfect as the present state of the art permits.

The **TS 35mm f/2.8 S.S.C.** lens employs unique tilt and shift adjustment provisions to change the optical axis of the lens for total picture control. The tilt adjustment increases depth of field. The shift adjustment compensates for perspective distortion. This lens enables oblique shots of walls, shop fronts, or trains, and may also be used for shooting tall buildings to eliminate perspective distortion. The TS 35mm also provides an oversized 58mm image circle to cover the entire picture format even at maximum tilt and shifts. Super Spectra Coating.

The **FD 24mm f/1.4 S.S.C. Aspherical** is the world's fastest 24mm lens for a 35mm camera. By using Canon's technological breakthrough—mass-produced, aspherical surfaces—it assures maximum resolution and contrast through optimum correction of all aberrations and through the use of floating elements. It also assures constant aberration correction throughout the focusing range from infinity to a close 30cm.

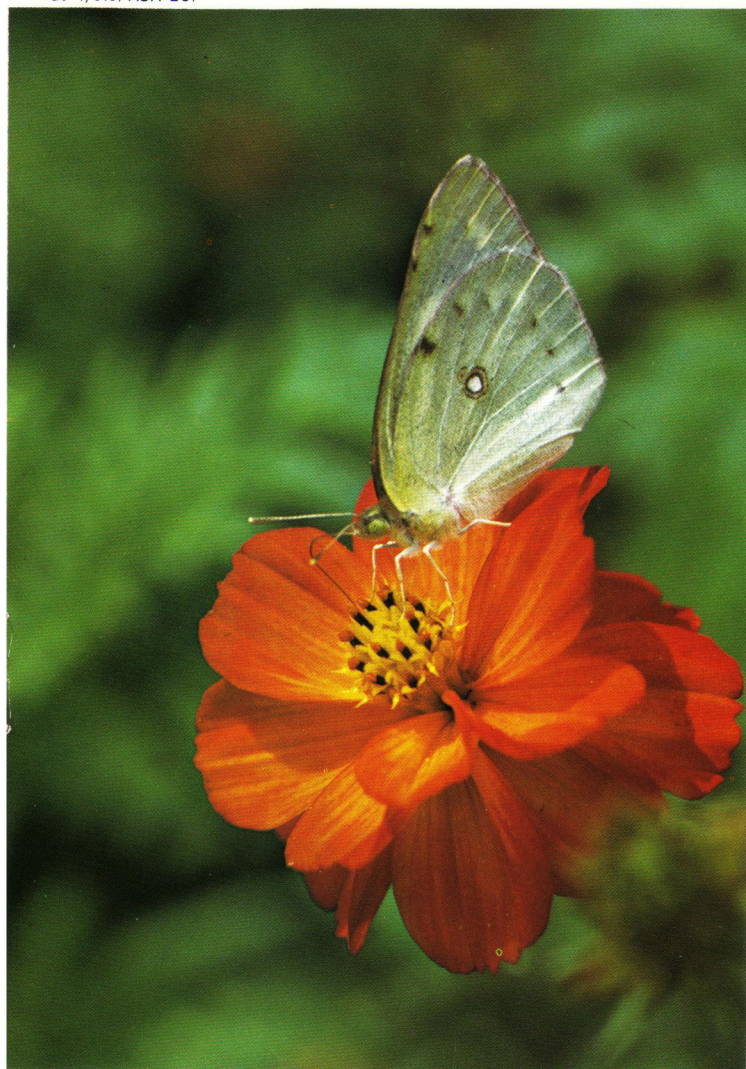
The **FD 55mm f/1.2 S.S.C. Aspherical** lens is a photographer's dream come true. It features everything in one lens: huge maximum aperture for bright viewfinder images and easy focusing, normal perspective and moderate angle of view, multilayer Super Spectra Coating, a Floating System for aberration-free photography at close distances, and a specially ground aspheric lens element for crystal clear and sharp pictures taken at f/1.2. Use this lens only once and you'll understand why Canon calls it "the perfect lens."



Use the **FD 50mm f/3.5 S.S.C. Macro lens** to capture the magic of the world in close-up — flowers, insects, or watchworks. Or you can copy pictures and diagrams from printed materials. With an extra long helicoid and exceptional flatness of field, this special lens can focus from infinity down to 1:1 with the addition of the Life Size Adapter. You can fill the 35mm frame with the center part of an orchid. And Super Spectra Coating ensures perfect color fidelity. The **Bellows FLM 100mm f/4** is a short-mount lens for use with Canon's Bellows FL or M. It is uniquely suited for macro photography, because its 100mm focal length provides natural-looking perspective and increased camera-to-subject distance. Extreme close-ups are simplified with the Bellows FLM 100mm. Spectra Coating.



Canon Photo Production Section. FD 50mm f/3.5 Macro S.S.C., 1/250sec. at f/5.6. ASA 25.



Canon Telephoto Lenses

Telephoto lenses have a narrow angle of view and shallow depth of field. They produce flattened perspective which makes them useful for portrait photography. And these Canon lenses have high resolving power to keep the image perfectly sharp from the center all the way out to the edges of the frame.

The **FD 85mm f/1.8 S.S.C.** is the fastest Canon lens in the telephoto group and one of the sharpest. Because of its fast speed and longer than normal focal length, the image it produces in the viewfinder is bright and snaps in and out of focus with ease. For these reasons, many knowledgeable photographers use the 85mm f/1.8 as their "standard lens". It is especially suited for candid shooting in dim light.

The **FD 100mm f/2.8 S.S.C.** is a large aperture telephoto lens with the fast speed and brightness of f/2.8. It is extremely compact and light in weight for easy shooting. In fact, it is the same length as the average 50mm lens. It has 2X magnification.

The **FD 135mm f/3.5 S.C.** is a telephoto lens with an 18° angle of view and a 2.7X magnification. Despite its 135mm focal length, it is a compact and inexpensive lens designed for easy hand-held shooting. The FD 135mm f/3.5 has high resolving power to give clear images from the center right out to the edges. It has Spectra Coating and a minimum of field curvature for precision and accuracy. The FD 135mm f/3.5 is an ideal lens for portrait, mountain, or sports photography.

The **FD 135mm f/2.5 S.C.** lens is one of Canon's fastest telephoto lenses. Its bright f/2.5 maximum aperture makes it one f/stop faster than the FD 135mm f/3.5 S.C. At full aperture the FD 135mm f/2.5 features a minimum of field curvature and produces sharp images with good contrast. It has a built-in retractable lens hood.

The **FD 200mm f/4 S.S.C.** lens is one of the world's most compact 200mm f/4 telephoto lenses. Its small size and weight make this lens convenient for hand-held shooting. The FD 200mm is highly corrected for chromatic aberration giving it good definition throughout its entire focusing range. Built-in retractable lens hood.

The **FD 200mm f/2.8 S.S.C.** is a compact, light-weight lens, designed especially for shooting news, sporting events and stage productions. Its high resolving power gives edge to edge sharpness and good definition over its entire focusing range. The closest focusing distance of 1.8m insures filling the frame with the subject. It is the ideal hand-holdable 200mm lens with the added brightness of f/2.8.

The **FD 300mm f/5.6 S.C.** telephoto lens is surprisingly compact. In fact, it is about the same length as an ordinary 200mm telephoto. The FD 300mm has an 8° field of view and 6X magnification to bring any subject up close. It has a built-in retractable lens hood and robust tripod attachment collar which may be easily rotated for either horizontal or vertical shots. Changes in temperature down to -30°C are compensated for in its helicoid. It has Spectra Coating to prevent flare or ghost images.



Canon Super Telephoto Lenses

Canon super telephoto lenses have 8–24X magnification for close-up shooting of subjects at great distances. Sports, news, and nature photography are possible with these powerful lenses. There are four models in the FL super-telephoto series, which includes the world's shortest all-glass 800mm lens.

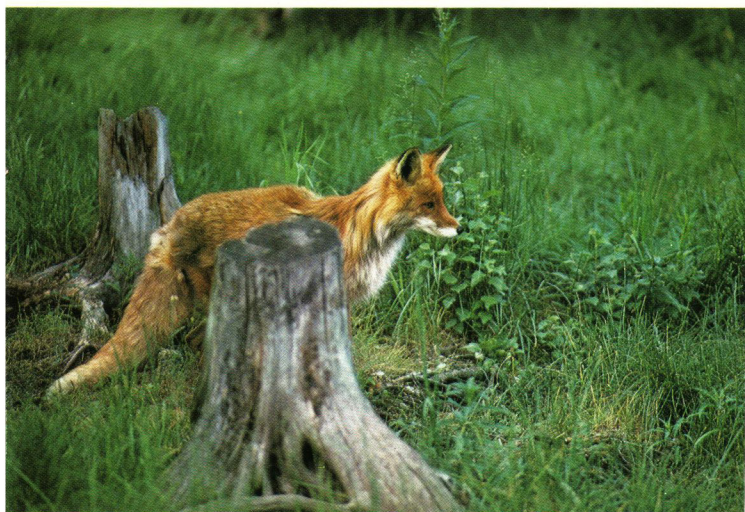
The 400mm, 600mm, 800mm and 1200mm front components are all interchangeable in the Canon Focusing Unit. This unit contains the two rear elements, automatic aperture control, and focusing adjustment for each of the four big lenses. This means economy of space as well as price. Simply by changing the front component the entire focal length of the lens can be altered. Canon super telephoto lenses are designed to be portable and easy to operate. And they have unbelievably high resolution for such long lenses. For the photographer with a big assignment, Canon's super telephoto lenses will give big performance.

The **FL 400mm f/5.6** has a 6.2° angle of view, 8X magnification, and Spectra Coating.

The **FL 600mm f/5.6** has a 4.1° angle of view, 12X magnification, and Spectra Coating.

The **FL 800mm f/8** has a 3.1° angle of view, 16X magnification, and Spectra Coating.

The **FL 1200mm f/11 S.S.C.** has a 2.1° angle of view, 24X magnification, and Super Spectra Coating.





Hideyuki Anzai. FL-F 300mm f/2.8 S.S.C., 1/15 sec. at f/2.8, E.I. 250, using tripod.

Canon Fluorite Lenses

With one or more lens elements made from artificially-grown fluorite crystals, Canon fluorite lenses are designed to deliver outstanding resolution and color balance by reducing chromatic aberration and secondary spectrum to the absolute minimum. An added benefit is that they are much shorter and lighter than conventional all-glass telephoto lenses.

Both the **FL 300mm f/5.6** and **FL 500mm f/5.6 Fluorite** lenses were awarded the International Camera Special Award in 1969 for their innovative design. Each lens contains one fluorite element and is supplied with its own built-in retractable lens hood, robust tripod attachment socket, and deluxe carrying case. The FL 300mm f/5.6 weighs only 830 grams, while the 500mm is just 300mm long.

The **FL 300mm f/2.8 S.S.C. Fluorite** is a brand new fluorite telephoto having an f/2.8 maximum aperture. It's a natural for indoor sporting events or theatrical performances under available light. Attach the special Canon Extender 2x to the rear of the lens, and you have a small and light-weight 600mm f/5.6 super-telephoto which focuses to an ultra-close 3.5m (12. ft.). And sharp! This lens was computer designed with the Extender 2X as part of its optical formula, so there is virtually no image degradation when it's attached to the lens. Available only by special order.



Canon Zoom Lenses

Canon zoom lenses were designed for the creative photographer, someone who improvises his shots. A zoom lens can be used for grab shots that might otherwise be lost in the time it takes to change lenses. They allow quick response in sports or news photography where speed and accurate framing are absolutely essential.

The **FD 35-70mm f/2.8-3.5 S.S.C.** is a new lens ideal for all-round photography from wide-angle to moderate telephoto. It is highly corrected for all aberrations and eliminates distortion and field curvature. In addition, close-up photography down to 30cm (1 ft.) from the film plane is possible by using the built-in macro capability. One of the best zoom lenses ever made.

The **FD 85-300mm f/4.5 S.S.C.** is a telephoto zoom lens with an extraordinary range of focal lengths. It has a minimum focusing distance of 2.5 meters (8 ft.) for tight shots of people, animals, or sporting events. It also has a relatively large maximum aperture for a bright and clear image in the viewfinder.

The **FD 100-200mm f/5.6 S.C.** is an inexpensive and relatively light-weight zoom lens for sports, snapshots, and scenery. Both zooming and focusing are controlled by a single ring. It takes 55mm filters.



Canon Photo Production Section. FD 100-200mm f/5.6 S.C., 1/15sec, at f/16, ASA 25.



FD Series(For Full-Aperture Metering or AE Operation)

Type	Lens	Construction		Angle of View	Minimum Aperture	Closest Focusing Distance		Filter Size (mm)	Hood	Length		Weight		
		Elements	Groups			(m)	(ft.)			(mm)	(ins.)	(g)	(lbs.)	(ozs.)
Full-Frame Fish-Eye	Fish-Eye FD 15mm f/2.8 S.S.C.	10	9	180°	f/16	.3	1	Four Built-in	Built-in	60.5	2-3/8	485	1	1
Super Wide-Angle	FD 17mm f/4 S.S.C.	11	9	104°	f/22	.25	10(ins)	72	None	56	2-3/16	450	1	0
	FD 20mm f/2.8 S.S.C.	10	9	94°	f/22	.25	10(ins)	72	None	58	2-1/4	345		12
	***FD 24mm f/1.4 S.S.C. ASPHERICAL	8	10	84°	f/16	.3	1	72	—	68	2-11/16	500	1	10
	FD 24mm f/2.8 S.S.C.	9	8	84°	f/16	.3	1	55	†BW-55B	52.5	2-1/16	330		11-1/2
Wide-Angle	***FD 28mm f/2.8 S.C.	7	7	75°	f/22	.3	1	55	BPW-55B	49	1-15/16	280		10
	FD 28mm f/3.5 S.C.	6	6	75°	f/16	.4	1.5	55	†BW-55B	43	1-11/16	250		9
	*FD 35mm f/2 S.S.C.	9	8	64°	f/16	.3	1	55	†BW-55A	60	2-3/8	370		13
	*FD 35mm f/3.5 S.C.	6	6	64°	f/16	.4	1.5	55	†BW-55A	49	1-15/16	280		10
Standard	*FD 50mm f/1.4 S.S.C.	7	6	46°	f/16	.45	1.5	55	†BS-55	49	1-15/16	305		11
	*FD 50mm f/1.8 S.C.	6	4	46°	f/16	.6	2	55	†BS-55	44.5	1-3/4	255		9
	FD 55mm f/1.2 S.S.C.	7	5	43°	f/16	.6	2	58	†BS-58	52.5	2-1/16	510	1	2
	FD 55mm f/1.2 S.S.C. ASPHERICAL	8	6	43°	f/16	.6	2	58	†BS-58	55	2-3/16	575	1	4
Macro	FD 50mm f/3.5 S.S.C. Macro With Life Size Adapter	6	4	46°	f/22	20.5(cm)	8.4(ins)	55	None Necessary	59.5	2-5/16	310		11
Short	FD 85mm f/1.8 S.S.C.	6	4	29°	f/16	.9	3	55	†BT-55	57	2-1/4	430		15
Telephoto	FD 100mm f/2.8 S.S.C.	5	5	24°	f/22	1	3.5	55	†BT-55	57	2-1/4	360		12-1/2
Telephoto	FD 135mm f/2.5 S.C.	6	5	18°	f/22	1.5	5	58	Built-in	91	3-9/16	630	1	6
	FD 135mm f/3.5 S.C.	4	3	18°	f/22	1.5	5	55	†BT-55	83	3-1/4	465	1	0
	***FD 200mm f/2.8 S.S.C.	5	5	12°	f/22	1.8	6	72	Built-in	140.5	5-1/2	700	1	8
	FD 200mm f/4 S.S.C.	6	5	12°	f/22	2.5	8	55	Built-in	133	5-1/4	675	1	7
	FD 300mm f/5.6 S.C.	6	5	8°	f/22	4	13	58	Built-in	173	6-13/16	1,125	2	7-1/2
Zoom	FD 35-70mm f/2.8-3.5 S.S.C.	10	10	64°-35°	f/22	†††1	3.5	58	Exclusive	120	4-3/4	575	1	4
	FD 85-300mm f/4.5 S.S.C.	15	11	29°-8°	f/22	2.5	8	Series IX	Built-in	243.5	9-9/16	1,695	3	7-1/2
	FD 100-200mm f/5.6 S.C.	8	5	24°-12°	f/22	2.5	8	55	Built-in	173	6-13/16	765	1	11

FL and Manual Series(For Stopped-Down Metering)

Type	Lens	Construction		Angle of View	Minimum Aperture	Closest Focusing Distance		Filter Size (mm)	Hood	Length		Weight		
		Elements	Groups			(m)	(ft.)			(mm)	(ins.)	(g)	(lbs.)	(ozs.)
Circular Fish-Eye	Fish-Eye 7.5mm f/5.6 S.S.C.	11	8	180°	f/22	Fixed Focus		Six Built-in	None	62	2-7/16	380		13-1/2
Tilt and Shift	TS 35mm f/2.8 S.S.C.	9	8	64°/79°	f/22	.3	1	58	Exclusive	74.5	2-15/16	545	1	3
Bellows Macro	FLM 100mm f/4	5	3	24°	f/22	Focusing by Bellows		48	None	43	1-11/16	220		7-1/2
Super Telephoto	**FL 400mm f/5.6	7	5	6.2°	f/32	4.5	15	††48	Exclusive	338	1' 1-15/16	3,890	8	9
	**FL 600mm f/5.6	6	5	4.1°	f/32	10	35	††48	Built-in	448	1' 5-5/8	5,000	11	0
	**FL 800mm f/8	7	5	3.1°	f/32	18	60	††48	Built-in	508	1' 8	5,360	11	13
	**FL 1200mm f/11 S.S.C.	7	5	2.1°	f/64	40	130	††48	Built-in	853	2' 9-9/16	6,200	13	11
Artificial Fluorite Telephoto	FL 300mm f/2.8 S.S.C. FLUORITE with Extender 2X	6	5	8°	f/32	3.5	12	Exclusive Insertion Type	Built-in	231	9-1/16	2,340	5	2
	FL 300mm f/5.6 FLUORITE	7	6	8°	f/22	4	13	58	Built-in	168	6-11/16	850	1	14
	FL 500mm f/5.6 FLUORITE	6	5	5°	f/22	10	33	95	Built-in	300	11-13/16	2,700	5	15

S.S.C.=Super Spectra Coating S.C.=Spectra Coating
 *Equipped with a coupling pin for Canon Auto Tuning System.
 **Front component interchangeable type. Focusing adapter (2 elements, 1 group, FL automatic diaphragm, with A-M ring)
 ***New lenses to be marketed during 1975.

■ Available by special order.
 †FD lens hoods are of bayonet mount.
 ††Filter is of insertion type with holder.
 †††Macro focusing capability to 30cm(1ft.) from film plane.

Subject to change without notice.

Canon

CANON INC. 11-28, Mita 3-chome, Minato-ku, Tokyo 108, Japan

- U.S.A. ————— **CANON U.S.A., INC. HEAD OFFICE**
10 Nevada Drive, Lake Success, Long Island, N.Y. 11040, U.S.A.
CANON U.S.A., INC. MANHATTAN OFFICE
600 Third Avenue, New York, N.Y. 10016, U.S.A.
CANON U.S.A., INC. CHICAGO OFFICE
457 Fullerton Avenue, Elmhurst, Illinois 60126, U.S.A.
CANON U.S.A., INC. LOS ANGELES OFFICE
123 Paularino Avenue East, Costa Mesa, California 92626, U.S.A.
CANON U.S.A., INC. WILSHIRE OFFICE
3113 Wilshire Boulevard, Los Angeles, California 90010, U.S.A.
- CANADA ————— **CANON OPTICS & BUSINESS MACHINES CANADA, LTD.**
HEAD OFFICE
3245 American Drive, Mississauga, Ontario, L4V 1B8, Canada
CANON OPTICS & BUSINESS MACHINES CANADA, LTD.
MONTREAL OFFICE
3070 Brabant-Marineau Street, St. Laurent, Quebec, H4S 1K7, Canada
- EUROPE, AFRICA
& MIDDLE EAST — **CANON AMSTERDAM N.V.**
Gebouw 70, Schiphol Oost, Holland
- CENTRAL &
SOUTH AMERICA — **CANON LATIN AMERICA, INC. SALES DEPARTMENT**
P.O. Box 7022, Panama 5, Rep. of Panama
CANON LATIN AMERICA, INC. REPAIR SERVICE CENTER
P.O. Box 2019, Colon Free Zone, Rep. of Panama
- SOUTHEAST ASIA — **CANON INC. HONG KONG BRANCH**
5th Floor 2-6, Fui Yiu Kok Street, Tsuen Wan, New Territories, Hong Kong