

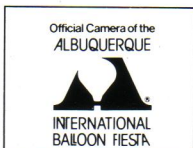
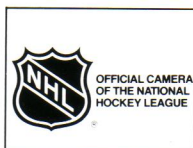
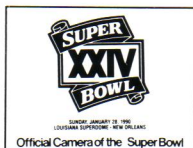
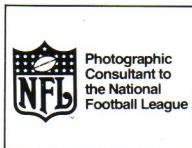
WILSONWERKS ARCHIVES

This camera manual is for reference and historical purposes, all rights reserved.

This cover page is copyrighted material. This document may not be sold or distributed without the express consent of the publisher.

©2008 wilsonwerks Llc

A SYMBOL IS A PROMISE.



Canon's high-performance cameras help photographers, from snapshooters to pros, get just the sports images they want; filled with split-second action and excitement.

Canon EOS 630

**FASTER AUTOFOCUS WITH NEW
INTEGRATED PROGRAM CAMERA CONTROL**

Canon

CANON INC. 7-1, Nishi-Shinjuku 2-Chome, Shinjuku-ku, Tokyo 163, Japan
Mailing address: P.O. Box 5050, Dai-ichi Seimei Building, Tokyo 163, Japan

U.S.A. **CANON U.S.A., INC. HEADQUARTERS**

One Canon Plaza, Lake Success, N.Y. 11042, U.S.A.

CANON U.S.A., INC. ATLANTA OFFICE

5625 Oakbrook Parkway Norcross, Ga. 30093, U.S.A.

CANON U.S.A., INC. CHICAGO OFFICE

100 Park Blvd. Itasca, Il. 60143-2693, U.S.A.

CANON U.S.A., INC. LOS ANGELES OFFICE

123 Paulmarino Avenue East, Costa Mesa, Cal. 92626, U.S.A.

CANON U.S.A., INC. SANTA CLARA BRANCH

4000 Burton Drive, Santa Clara, Cal. 95054, U.S.A.

CANON U.S.A., INC. DALLAS OFFICE

3200, Regent Blvd., Irving, Tex. 75063-3145, U.S.A.

CANON U.S.A., INC. HONOLULU BRANCH

1025 Asahi St., Bldg. #1, Honolulu, Hawaii 96814, U.S.A.

CANON U.S.A., INC. WASHINGTON D.C. BRANCH

5701 General Washington Drive Alexandria, Va. 22312, U.S.A.

CANADA **CANON CANADA INC. HEADQUARTERS**

6390 Dixie Road, Mississauga, Ontario L5T 1P7, Canada

CANON CANADA INC. MONTREAL SERVICE CENTRE

10652 Côte de Liesse, Lachine, Quebec H8T 1A5, Canada

CANON CANADA INC. CALGARY OFFICE

2628, 16th Street, N.E. Calgary, Alberta T2E 7K7, Canada

EUROPE, AFRICA & MIDDLE EAST **CANON EUROPA N.V.**

Bovenkerkerweg 59-61, P.O. Box 2262, 1180 EG Amstelveen, The Netherlands

CANON PHOTO VIDEO FRANCE S.A.

Le Doussart 11, Avenue Dubonnet 92407 Courbevoie Cédex, France

CANON UK LTD.

Units 4 & 5, Brent Trading Centre, North Circular Road, London NW10 0JF, United Kingdom

CANON EURO-PHOTO G.m.b.H.

Siemensring 90-92, D-4156 Wülfrath 1, West Germany

CENTRAL & SOUTH AMERICA **CANON LATIN AMERICA, INC. DEPTO. DE VENTAS**

Apartado 7022, Panamá 5, República de Panamá

CANON LATIN AMERICA, INC. CENTRO DE SERVICIO Y REPARACION

Apartado 2019, Zona Libre de Colón, República de Panamá

SOUTHEAST ASIA **CANON HONG KONG TRADING CO., LTD.**

Room 1101-3 & 1121-2, Peninsula Centre, 67 Mody Road, Tsimshatsui East, Kowloon, Hong Kong

CANON SINGAPORE PTE. LTD

95 South Bridge Road # 13-01/15, South Bridge Centre, Singapore 0105

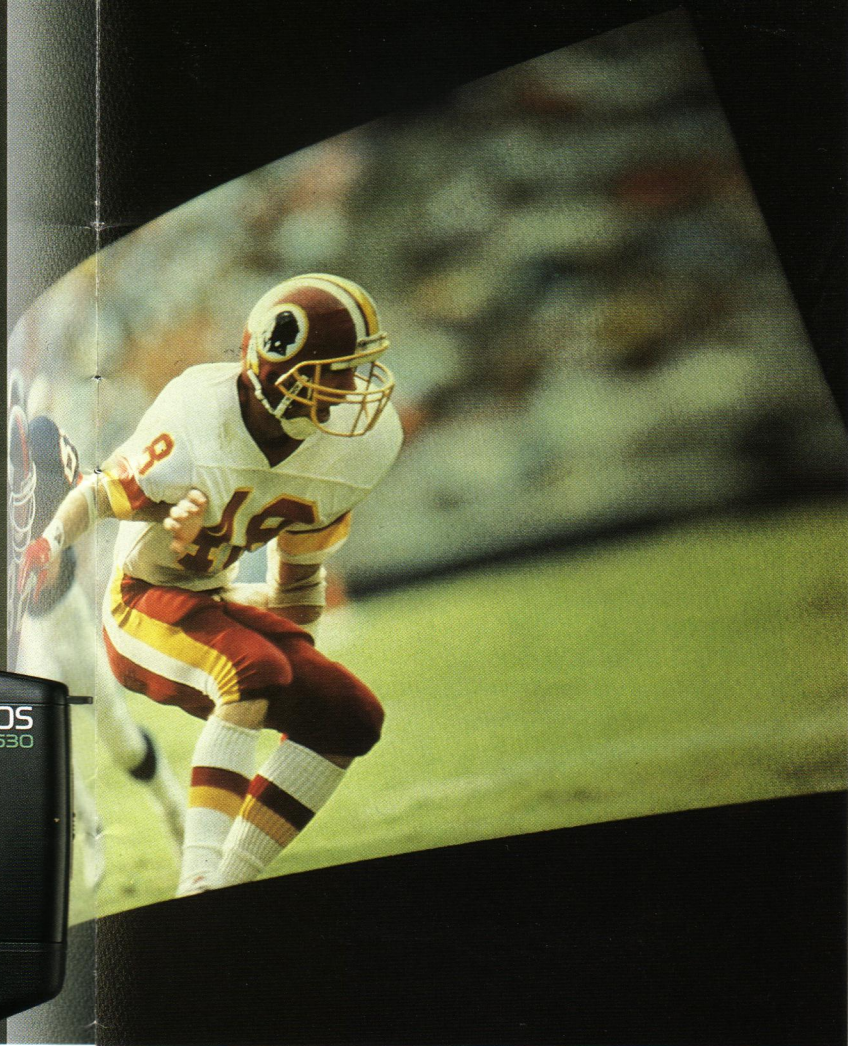
OCEANIA **CANON AUSTRALIA PTY. LTD.**

1 Thomas Holt Drive, North Ryde, N.S.W. 2113, Australia

JAPAN **CANON SALES CO., INC.**

11-28, Mita, 3-Chome, Minato-ku, Tokyo 108, Japan





CREATE GREAT PHOTOS EVERY TIME WITH FASTER AUTOFOCUS, VERSATILE AE AND NEW PROGRAMMED IMAGE CONTROL

AUTOFOCUS SYSTEM

The EOS 630 autofocus system targets your subject nearly twice as fast as other EOS models. New *Focus Prediction* catches high-speed, head-on action with razor-sharp results.

PROGRAMMED IMAGE CONTROL

Respond to different subject types with seven separate Programmed Image

Control settings. Each features an ideal combination of exposure, metering, focus and film transport selections to expertly and automatically create the image you want.

CUSTOM FUNCTION CONTROL

Personalize up to seven basic camera operations with the new Custom Function Control and take great photos the way *you* want to.

DUAL METERING SYSTEMS

Choose either six-zone or single-area light readings with Evaluative and Partial Metering systems.

EXTENDED EXPOSURE CONTROL

Choose from five exposure modes supplemented by versatile Auto Exposure Bracketing, Multiple Exposure and Variable Program Shift functions.

BUILT-IN MOTOR DRIVE

Shoot up to five frames per second with a powerful built-in motor drive.

COMPLETE LENS AND ACCESSORY SYSTEM

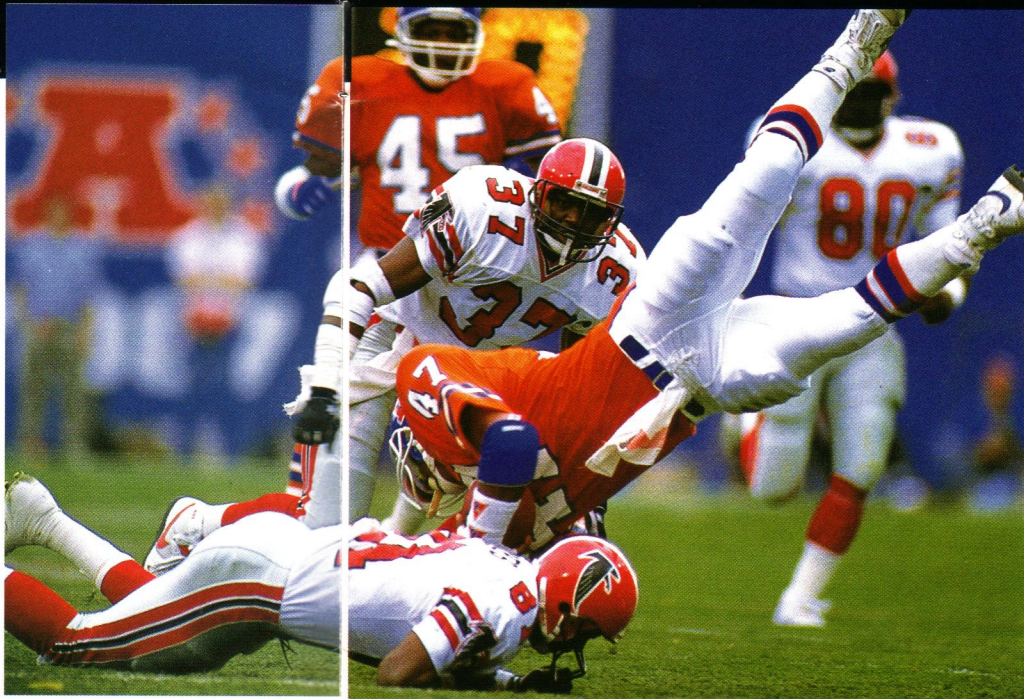
Make your photographic ideas a reality with Canon's full line of interchangeable EF lenses, flashes and other accessories.

AUTOFOCUS

SET YOUR IMAGINATION FREE WITH FASTER, MORE ACCURATE AUTOFOCUS

Experience the freedom of fast and convenient autofocus with the EOS 630. It features Canon's unique lens-integral autofocus design so every lens gets exactly the amount of focus drive power it needs.

Moreover, more responsive circuitry and a new high-speed central processing unit in the main camera body bring accurate lens-integral autofocus to a new level of speed—nearly two times faster than other EOS models.

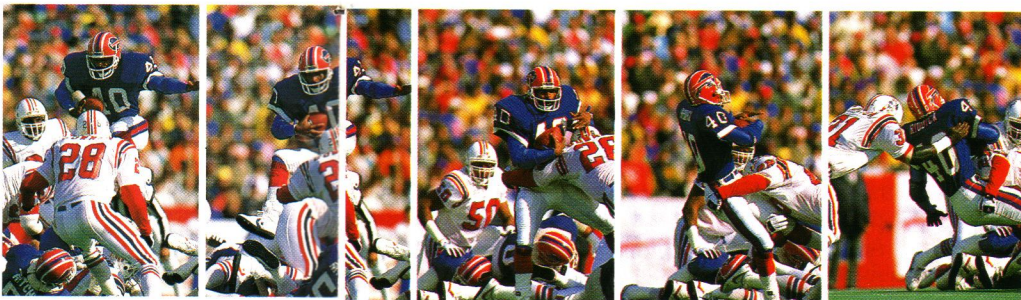


CAPTURE EVERY INSTANT AT UP TO FIVE FRAMES PER SECOND

The completely automatic film handling system centers around a built-in motor drive with professional-level power.

Shoot up to five frames per second in the drive's Continuous mode and catch every change of expression in your subject's face. Or record an instant-by-instant sequence of fast-breaking events.

When you're in the Single-Frame mode, the motor drive leaves you free to concentrate on your subject by automatically advancing the film.



The EOS 630 autofocus system focuses on your subject quickly and accurately. Built-in features include Servo and One-shot autofocus modes, as well as fully manual focus control. Convenient and precise, EOS autofocus puts your attention where it belongs—on your subject.



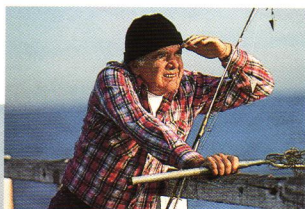
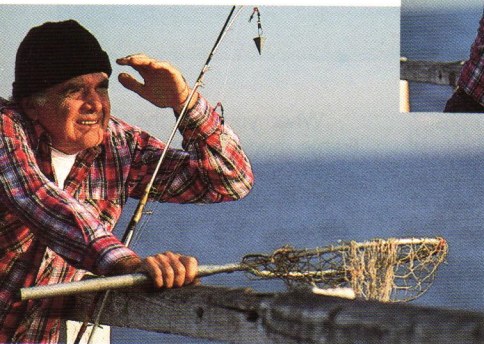
SERVO AF WITH FOCUS PREDICTION MEETS THE ACTION HEAD-ON

Choose the EOS 630's Servo AF mode to track fast action as it happens.

Servo AF continuously adjusts focus for you as the subject moves. And now new **Focus Prediction** takes servo AF to an even higher level of performance.

Focus Prediction works whenever a fast subject approaches or draws away from the camera. It drives the autofocus system from the instant you press the shutter button right up to the

moment of exposure. That extra focusing step ensures razor-sharp shots—even for action that's coming head-on.



ONE-SHOT AF GIVES YOU TOTAL COMPOSITION CONTROL

Get a fresh outlook on any subject with the One-shot autofocus mode.

One-shot AF locks focus once the image is sharp so you're free to recompose and

place your subject anywhere in the frame.

It's the ideal mode for candid shots, travel photos and more. Or, use it to stop ultra fast-moving subjects as they cross a preset focus zone.



AUTOFOCUS BY THE LIGHT OF A SINGLE FLAME

At EV1 (the light of a single candle), even if you can't see well enough to focus, EOS autofocus can. Now you can discover a whole new world of low-light photo possibilities.

EOS owes this remarkable sensitivity to Canon's innovative BASIS (Base-Stored Image Sensor) device. BASIS actually amplifies existing light readings for accurate autofocus that keeps you shooting when other photographers need to turn on the lights.

PROGRAMMED IMAGE CONTROL

Programmed Image Control (PIC) makes full-auto shooting convenient *and* creative. You simply choose from seven preset modes. Each offers a unique combination of autofocus, automatic exposure, light metering, and film transport settings to put the perfect camera elements into every shot.

P1: STANDARD

Standard covers typical subjects quickly and easily, using One-shot AF, Intelligent Program AE, 6-Zone Evaluative Metering, and Single-Frame film advance systems that usually give the best results for general photography.

Change to a new setting when you have a specific vision of what you want to do. Just turn the Electronic Input Dial to a new PIC selection while holding down the Mode button.

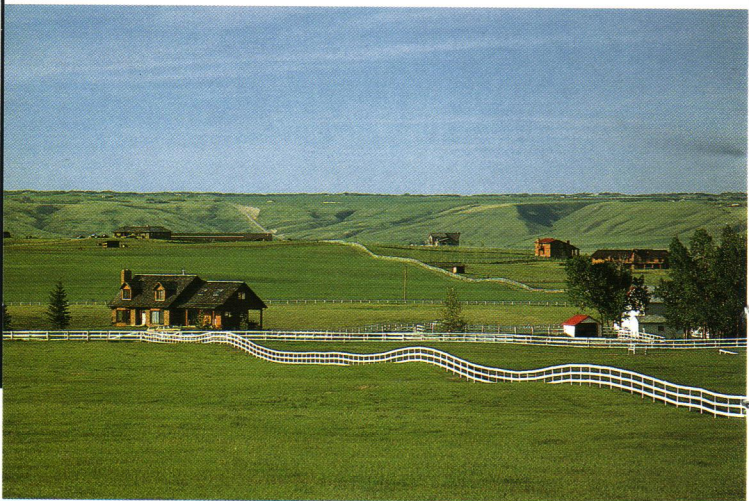


P2: QUICKSHOT

Shift to setting number 2, **Quickshot**, for children, pets and other lively subjects. You're supported by the same

exposure and metering systems as in **Standard**, but Servo AF and Continuous mode motor drive help you keep up with all the action.





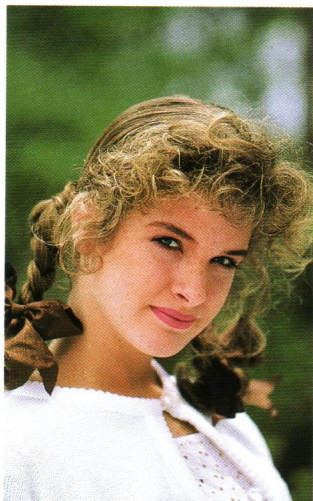
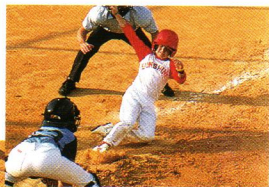
P3: LANDSCAPE

Landscape features One-shot AF and Single-Frame film advance to let you record the sights at your own pace. The exposure program favors small

apertures so you get sufficient depth of field to put the entire view into sharp focus—just the way it appears to the human eye.

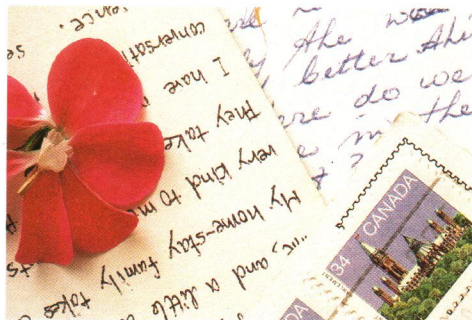
P4: SPORTS

Shift to **Sports** for fast-moving targets: athletes, race cars, or even wildlife. Servo AF, continuous mode motor drive, and an exposure program that's biased to faster shutter speeds help you keep pace with all the action.



P5: PORTRAIT

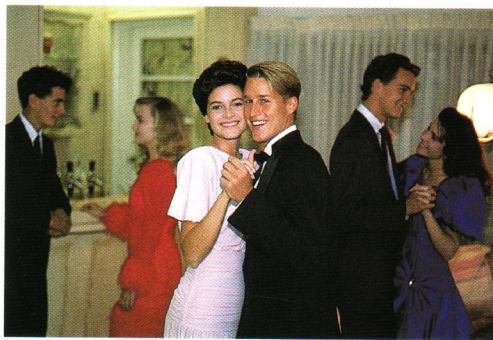
In **Portrait**, large apertures are favored to emphasize your subject with a shallow zone of focus that blurs distracting backgrounds. One-shot AF lets you recompose for off-center subjects and Continuous mode motor drive action keeps you on top of even fleeting changes of expression.



P6: CLOSE-UP

Close-Up uses the camera's Partial Metering system for precise exposure control. An exposure program

that favors small apertures compensates for the shallow depth of field that comes with working up close.



P7: INDOOR

Choose **Indoor** to cover parties, gatherings, or any subject inside. Use it with an EOS Speedlite for well-balanced photographs with

bright backgrounds. If you prefer naturally lit indoor scenes, the exposure program automatically selects the highest shutter speed possible to prevent camera shake.

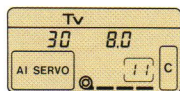
EXPOSURE

Choose just the right level of control with five built-in exposure modes—Manual, Shutter-priority AE, Aperture-priority AE, Depth-of-Field AE and Intelligent Program AE with Variable Program Shift—plus versatile Multiple Exposure and Automatic Exposure Bracketing features.

SHUTTER-PRIORITY AE

In the Shutter-priority AE mode, the camera automatically matches your shutter-speed decision with the proper aperture.

Select a fast shutter speed—up to 1/2000 of a second—to eliminate camera shake or to stop sports and other action subjects. Or try a slow shutter speed for creative blurring effects.



APERTURE-PRIORITY AE

Aperture-priority AE gives you control over depth of field. Select a large aperture for a shallow zone of focus that emphasizes your main subject. Or, choose a small aperture to create a broad zone of focus that pulls in the entire picture frame sharp and clear.

You can preview the focus zone in every shot with the Depth-of-Field Check button. Once you're satisfied with the

aperture, the camera sets the proper shutter speed.

MANUAL EXPOSURE

Take complete control over exposure by setting the aperture and shutter speed yourself with the manual exposure function.

Exposure selections conveniently appear in the viewfinder and display panel. LED lamps indicate whether the setting is overexposed, underexposed, or right on target.

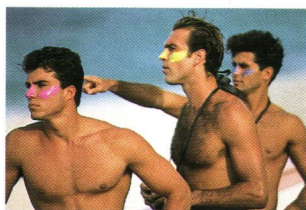




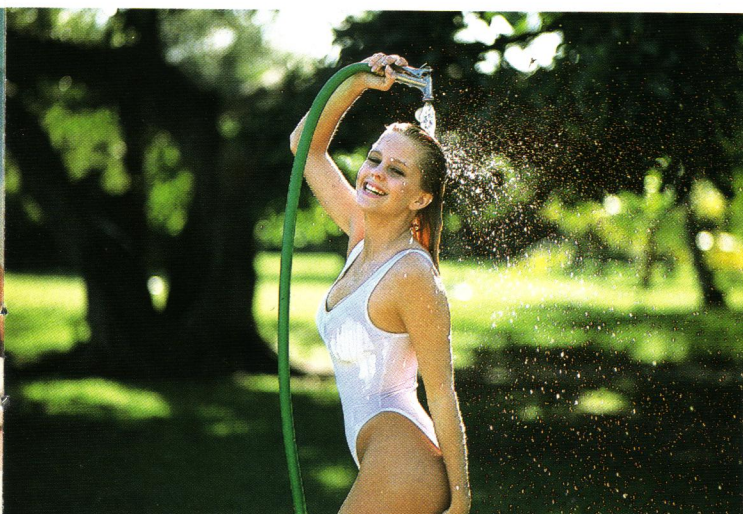
DEPTH-OF-FIELD AE: THE EASY WAY TO KEEP YOUR SUBJECT IN PERSPECTIVE

A handy Depth-of-Field AE mode lets you decide where every photo's zone of focus will begin and end. It's as easy as aiming the camera.

The mode works through the camera's autofocus and auto exposure systems. You simply aim the camera at the nearest point of focus and press the shutter button. Then point at the farthest point of focus and press the shutter button again.



Now you're ready to reframe and shoot. The camera's computer automatically sets an aperture and focus point to put everything between the two selected points into sharp focus.



INTELLIGENT PROGRAM AE THAT SHIFTS WITH YOUR NEEDS

Experience a more creative system of automatic exposure with the EOS 630's Intelligent Program AE mode.

Like conventional AE programs, it selects a suitable aperture and shutter speed for every exposure. Unlike conventional AE programs, *Intelligent* Program AE tailors every decision to the lens on your camera, responding even to changes in the focal length of a zoom.



Moreover, a Variable Program Shift function lets you creatively alter the AE program. Now you can bias the program to favor fast or slow shutter speeds, large or small apertures—whatever you need to get the results you want.



-0.5 steps of compensation applied

Standard metered value

+0.5 steps of compensation applied

AUTOMATIC EXPOSURE BRACKETING

Automatic Exposure Bracketing covers the same scene with three frames shot at three different exposures—one under, one over, and one at standard metered value. You can intentionally vary the

amount of under- and over-exposure by up to five steps in 1/2 step increments.



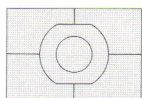
MULTIPLE EXPOSURES

The multiple exposure function lets you record up to nine images on a single frame

without troublesome film transport manipulation. Use it to show progressive action or to create a special mood.

METERING

Tailor the exposure to every subject with a choice of six-zone or single-area light analysis through built-in Evaluative and Partial Metering systems.



Six metering zones

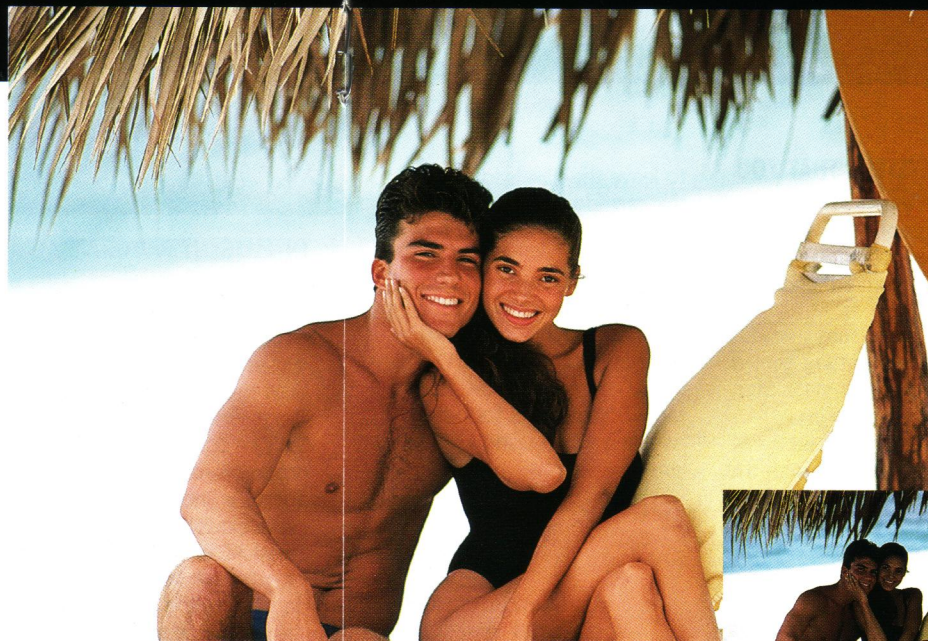
6-ZONE EVALUATIVE METERING: YOUR IN-CAMERA "SPECIALIST" FOR TOUGH LIGHTING DECISIONS

An accurate light metering system can make the difference between a good photo and a great one. But while conventional light metering systems usually work fine in normal light, they often can't cope when conditions are unusual.

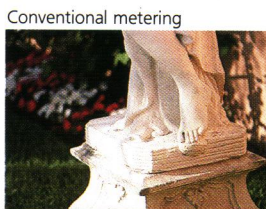
Canon's 6-Zone Evaluative Metering system *can* cope because the judgment for handling unusual light is built right into the camera.

It first analyzes six separate areas of the viewfinder image. Then, the main body computer selects the proper exposure by comparing the light in your photo with data from thousands of real-life examples.

Newly improved for the EOS 630, 6-Zone Evaluative Metering now features 1/4 step exposure compensation increments and an improved algorithm of exposure data.



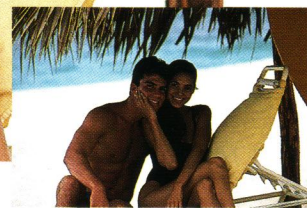
Evaluative metering



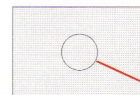
Conventional metering



Partial metering



Conventional metering



Partial metering mark

PARTIAL METERING FOR PINPOINT EXPOSURE CONTROL

Override the 6-Zone Evaluative Metering system with Partial Metering for complete control over exposure readings. It confines metering to the central 6.5% area of the viewfinder for pinpoint accuracy when metering highlights, shadows, and other critical exposure areas.

CUSTOM FUNCTION CONTROL

Canon's new Custom Function Control lets you program the camera to operate the way that you want it to. Now you can tailor seven basic camera functions to suit your shooting style or your subject choice.

CAMERA SYSTEMS THAT YOU CAN CHANGE AT WILL

Reprogram up to seven basic camera operations with the new Custom Function Control.

For instance, turn the camera-shake warning beeper off and cancel automatic film rewind for shooting in museums or other quiet areas. Or activate autofocus with the partial metering button instead of the shutter button..

If you often "adjust" your film speed, cancel automatic DX-coded film speed setting. And programming the camera

to leave the film leader *outside* the cartridge makes it easy to reload partially exposed rolls of film.

If it suits your hand better, reprogram the camera's manual exposure system to favor aperture controls. Or set the AF system to allow free focus adjustments for better handling when using USM lenses.

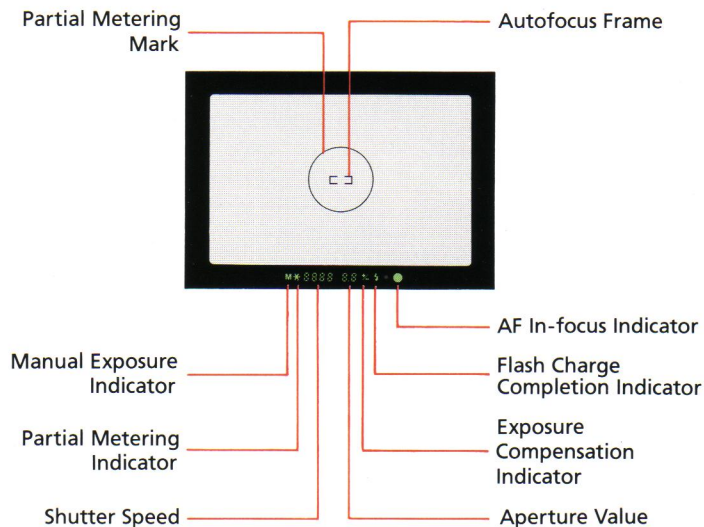
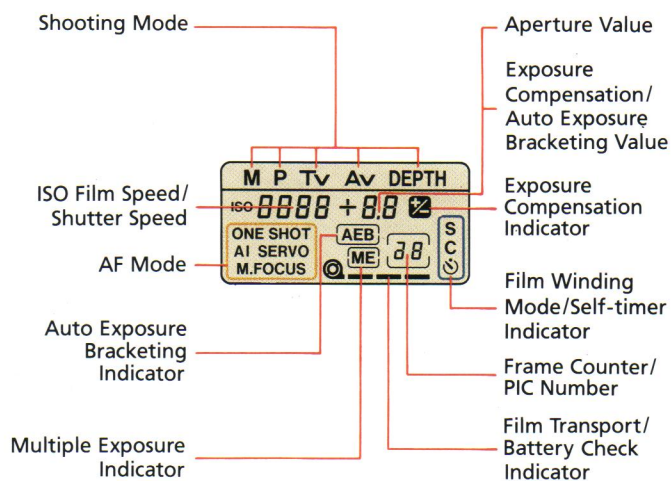
CUSTOM FUNCTION CONTROL CHART

Control		User-selected Operation	Normal Operation
1	Film rewind cancellation	Cancels automatic film rewind function	Film rewind starts automatically at end of roll
2	Film leader out	Leaves film leader outside the cartridge	Film leader completely rewound into cartridge
3	Film speed set	Allows film speed setting of DX-coded film	Film speed set by camera according to DX-code
4	Autofocus start	Autofocus activated by pressing partial metering button	Autofocus starts when shutter button pressed halfway
5	Manual exposure operation	Aperture	Set by electronic input dial operation only
		Shutter speed	Set by manual aperture set button or EL button with electronic input dial
6	Camera shake warning tone cancellation	Turns off camera-shake warning tone	Tone sounds automatically with main switch at "□" or "(•)"
7	Manual focus operation	Allows manual focus adjustment after autofocus for USM lenses	Manual focus adjustment possible by setting focus mode switch on USM lenses

The control number appears in the display panel. Set control combinations as desired.

INFORMATION

The EOS 630 puts the shooting information you want exactly where you need it—right before your eyes. Focus, exposure, flash charging, and more are all clearly indicated in the viewfinder.



FLASH

The EOS autoflash system makes it easy to control the light. Any dedicated Canon Speedlite automatically adjusts from a strong burst of light for nighttime scenes to gentle illumination for daytime fill-in flash effects.

AUTOFLASH: A BRILLIANT CHOICE FOR NIGHT OR DAY

Attach a Canon Speedlite to the EOS 630 and experience a new standard for accurate and convenient flash photography. The system handles any shot—from total darkness to daylight shadow control—with automatic ease.

With the EOS 630's Advanced-TTL (Through the Lens) metering, a near-infrared preflash actually ranges the distance to your subject before the main flash fires. The camera's flash program AE mode then uses this measurement and a brightness reading of the image to set the proper aperture and shutter speed.

When used during the day, A-TTL metering automatically adjusts to balance illumination between your subject and the background. Soft flash lighting fills in harsh shadows for a natural and pleasing effect.

You can also use A-TTL metering with the Aperture- or Shutter-priority AE modes for creative control over depth of field or subject movement.



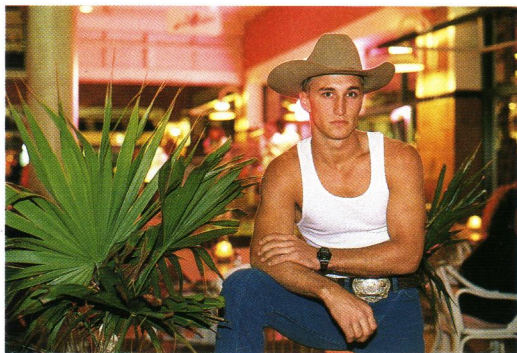
Fill-in flash

All EOS 630 compatible Speedlites feature a built-in AF auxiliary light that permits autofocusing in complete darkness. And quick recharging (about one second) keeps you on top of all the action.

Moreover, the 430EZ and 300EZ Speedlites feature an internal auto zoom that automatically adjusts flash angle coverage to match changes in the focal length of a zoom lens. And an adjustable swivel head on the 430EZ lets you "bounce" the flash for even, natural indoor lighting effects.



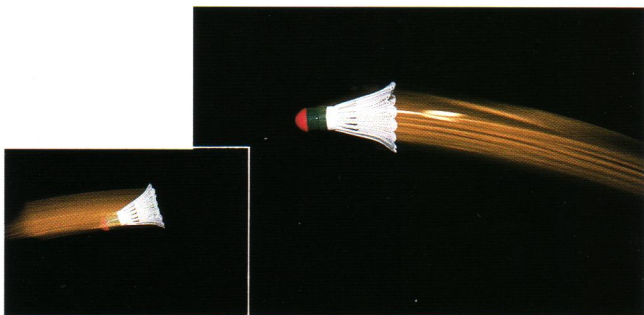
Bounce flash



SLOW-SYNC FLASH

Bring out all the details of a dark background with the slow-sync flash function. This automatically balances the

flash exposure of your subject with an ambient-light background exposure for natural and attractive results.



First-curtain sync

Second-curtain sync

SECOND-CURTAIN SYNC

Set the 300EZ or 430EZ Speedlites to fire at either the first or second shutter curtain.

Second-curtain sync creates a trailing stream of light behind the moving subject.



STROBOSCOPIC FLASH

Create dramatic images with the stroboscopic flash function on the 430EZ. You can set the flash to fire from

one to five bursts of light per second to break progressive action down into separate stages of movement.



430EZ

300EZ

ML-3

Speedlite 430EZ/300EZ

- AF auxiliary light permits positive autofocus even in total darkness.
- Advanced TTL auto-flash system provides fully automatic flash control from ordinary flash photography to fill-in lighting.
- Rapid-fire function; charging time less than 1.5 sec. with 430EZ or 1 sec. with 300EZ.
- Auto Internal Zoom mechanism instantly matches flash coverage to the focal length of the lens in use.
- Second-curtain sync for special-effect after-images.

For 430EZ only

- Stroboscopic flash effects with continuous firing at up to 5 flashes per second.
- Bounce mechanism: swings upward 90°, right 90°, or left 180°.
- LCD panel with Electro-Luminescence Illumination.
- Optional power source: external battery pack uses six, C-size alkaline batteries or Ni-cds with Canon Ni-Cd pack TP.

Guide number:

(at ISO 100 with 35mm flash head setting)

430EZ: 100-ft/30-m

300EZ: 83-ft/25-m

Battery life:

(with A-TTL mode)

Battery	Number of Flashes
AA-size alkaline batteries	430EZ: approx. 700 300EZ: approx. 1500
AA-size Ni-Cd batteries	430EZ: approx. 300 300EZ: approx. 650

Dimensions:

430EZ: 2-15/16" (W) × 5" (H) × 4-3/16" (D)
(75 × 122 × 106mm)

300EZ: 2-5/8" (W) × 3-1/2" (H) × 3-15/16" (D)
(66 × 89 × 100.5mm)

Weight:

430EZ: 12.7 oz. (365g) without batteries

15.9 oz. (450g) with batteries

300EZ: 7.6 oz. (215g) without batteries

11.1 oz. (315g) with batteries

Macro Ring Lite ML-3

Pick the Macro Ring Lite ML-3 for close-up photography. It provides gentle illumination for macro shots of insects, flowers, or intricate subject detail.

The ML-3 features two flash tubes mounted in a ring that can be fired



430EZ's swivel flash head

together for balanced subject illumination, or separately to create dramatic shadows and a sense of depth.

- Ring-shaped flash for macro photography (range: 0.78 in. to 13 ft./20mm to 4m)
- AF auxiliary light permits positive autofocus even in total darkness (20cm to 1m).
- TTL auto-flash system provides fully automatic flash control from ordinary flash photography to fill-in lighting.

Flash output:

Two tubes can be fired separately or together.

Guide number:

36-ft/11-m at ISO 100

Battery life:

(in TTL mode)

Battery	Number of Flashes
AA-size alkaline batteries	approx. 1000
AA-size Ni-Cd batteries	approx. 450

Dimensions:

Control Unit: 2-15/16" (W) × 2-3/8" (H) × 4-3/16" (D)
(74 × 60.5 × 106.5mm)

Flash Unit: 4-3/16" (W) × 4-13/16" (H) × 15/16" (D)
(106 × 123 × 24.5mm)

Weight:

Control Unit: 7.9 oz. (225g) without batteries

Flash Unit: 4.9 oz. (140g)

All data are based on Canon's Standard Test Method. Subject to change without notice.

LENSES

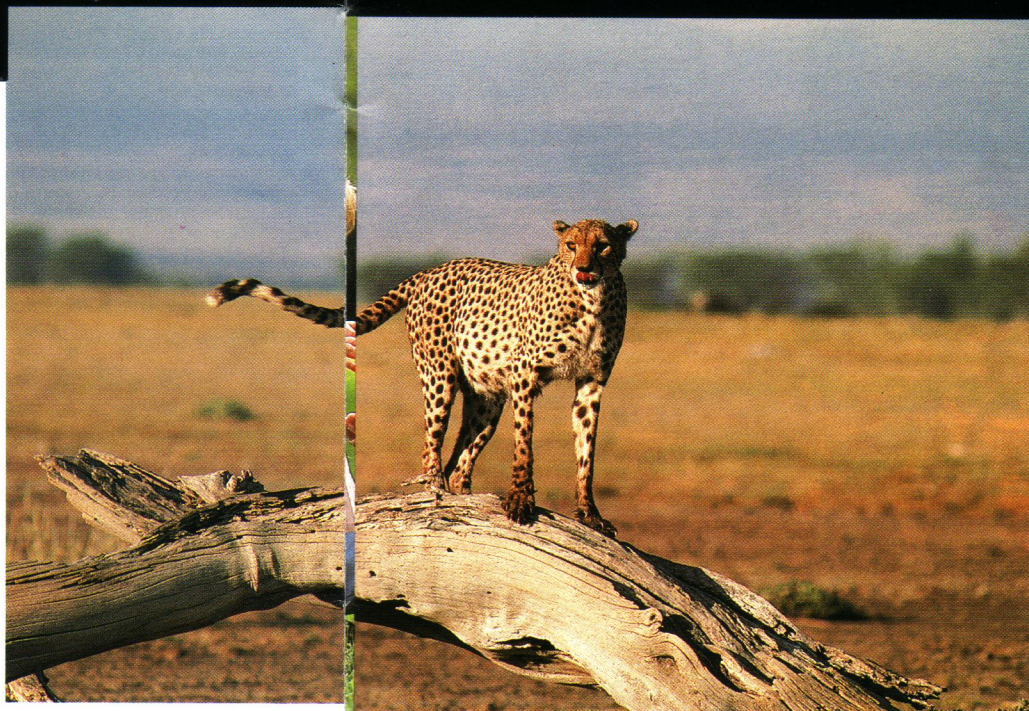
Canon's complete system of EF lenses equips you to handle any photo situation with confidence. A full line of wide-angle, telephoto, zoom, macro, and specialty lenses is available.

THE EF LENS SYSTEM: BROAD ENOUGH TO MEET EVERY VISION

Superior optics and advanced technology make every photo a brilliant example of the leading edge of lens design and performance. They capture your images with contrast, color reproduction and balance that match what you saw in the viewfinder.

All data exchange between the camera and the lens takes place through Canon's fully electronic EF lens mount. An Electro-Magnetic Diaphragm provides quick, precise aperture control and one-touch depth of field preview.

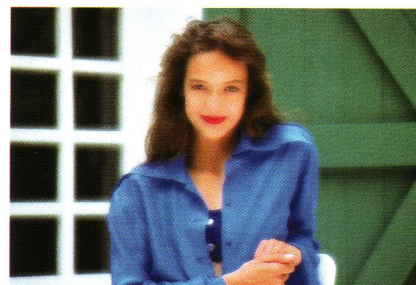
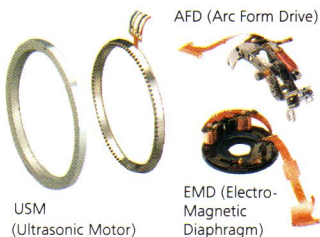
High-torque Arc Form Drive (AFD) motors power the autofocus systems of most EF lenses. Canon's exclusive Ultrasonic Motor (USM)



Telephoto

provides virtually noiseless autofocus drive power for selected "L" series lenses.

EF "A" series lenses feature no manual focusing controls. "L" series offer high contrast, superior resolution, and flare-free images through ultra-low dispersion (UD) optics or glass-molded aspherical elements.



Softfocus



Macro (with Life-Size Converter)

CHANGE THE WAY YOU SEE THE WORLD

Explore Canon's full line of EF lenses for a new look at the world of photography.

Wide angle lenses, for instance, let you see more of

the scene, so they're perfect for travel, landscape, or detail photography.

Telephoto lenses feature a narrow field of view that brings distant subjects closer to fill the frame and isolate

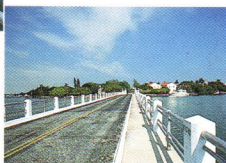
foreground from background.

Zoom lenses give you a range of focal lengths in one handy tool. Just vary the zoom to crop any scene. Most EF zoom lenses also offer macro capabilities.

Specialty lenses include a Compact-Macro 50mm lens, a 135mm lens with softfocus, and a 15mm Fish-eye lens that provides a 180° diagonal field of view.



24mm



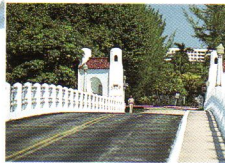
35mm



50mm



105mm



300mm



600mm

EF LENS LINEUP

Lens	Focus Drive		Angle of View	Construction	Minimum Aperture	Closest Focusing Distance		Filter Size (mm)	Length		Weight	
	AFD	USM				(ft.)	(m)		(in.)	(mm)	(oz.)	(g)
Fish-eye EF 15mm f/2.8	●		180°	7-8	22	0.7	0.2	Filter Holder	2-7/16	62.2	11.6	330
EF 24mm f/2.8	●		84°	10-10	22	0.8	0.25	58	1-15/16	48.5	9.5	270
EF 28mm f/2.8	●		75°	5-5	22	1	0.3	52	1-11/16	42.5	6.5	185
EF 50mm f/1.8	●		46°	5-6	22	1.5	0.45	52	1-11/16	42.5	6.7	190
EF 50mm f/1.0L (Ultrasonic)		●	46°	9-11	16	2	0.6	72	3-3/16	81.5	2.2 lb.	985
Compact-Macro EF 50mm f/2.5	●		46°	8-9	32	0.748	0.228	52	2-1/2	63	9.9	280
EF 85mm f/1.2L (Ultrasonic)		●	28°30'	7-8	16	3.1	0.95	72	3-5/16	84	2.3 lb.	1,025
Softfocus EF 135mm f/2.8	●		18°	6-7	32	4.3	1.3	52	3-7/8	98.4	13.8	390
EF 200mm f/1.8L (Ultrasonic)		●	12°	10-12	22	8.2	2.5	48 (drop-in type)	8-3/16	208	6.6 lb.	3,000
EF 300mm f/2.8L (Ultrasonic)		●	8°15'	7-9	32	9.8	3	48 (drop-in type)	9-9/16	253	6.3 lb.	2,855
EF 600mm f/4L (Ultrasonic)		●	4°10'	8-9	32	19.7	6	48 (drop-in type)	17-15/16	456	13.2 lb.	6,000
EF 20-35mm f/2.8L	●		94°-63°	12-15	22	1.6	0.5	72	3-1/2	89	19.1	540
EF 28-70mm f/3.5-4.5II	●		75°-34°	9-10	22-29	1.3	0.39	52	3	75.6	10.1	285
EF 28-80mm f/2.8-4L (Ultrasonic)		●	75°30'	11-15	22	1.6	0.5	72	4-11/16	119.5	2.1 lb.	945
EF 35-70mm f/3.5-4.5	●		63°-34°	8-9	22-29	1.3	0.39	52	2-1/2	63	8.6	245
EF 35-70mm f/3.5-4.5A	●		63°-34°	8-9	22-29	1.3	0.39	52	2-1/2	63	8.1	230
EF 35-105mm f/3.5-4.5	●		63°-23°20'	11-14	22-29	3.1	0.95	58	3-1/4	81.9	14.1	400
EF 35-135mm f/3.5-4.5	●		63°-18°	12-16	22-29	3.1	0.95	58	3-3/4	94.5	16.8	475
EF 50-200mm f/3.5-4.5	●		46°-12°	13-16	22-29	3.9	1.2	58	5-3/4	146.4	24.4	690
EF 50-200mm f/3.5-4.5L	●		46°-12°	14-16	22-29	3.9	1.2	58	5-3/4	145.8	24.5	695
EF 70-210mm f/4	●		34°-11°20'	8-11	32	3.9	1.2	58	5-7/16	137.6	21.4	605
EF 80-200mm f/2.8L	●		30°-12°	13-16	32	5.9	1.8	72	7-5/16	185.7	2.9 lb.	1,330
EF 100-200mm f/4.5A	●		24°-12°	7-10	32	6.2	1.9	58	5-1/8	130.5	18.4	520
EF 100-300mm f/5.6	●		24°-8°15'	9-15	32	4.9	1.5	58	6-9/16	166.8	24.2	685
EF 100-300mm f/5.6L	●		24°-8°15'	10-15	32	4.9	1.5	58	6-9/16	166.6	24.5	695
Extender EF 2x	—	—	—	5-7	—	—	—	—	2	50.5	8.5	240
Extender EF 1.4x	—	—	—	4-5	—	—	—	—	1-1/16	27.3	7.1	200
Life-Size Converter EF	—	—	—	3-4	—	—	—	—	1-3/8	34.9	5.6	160

*Extender EF 2x is for exclusive use with EF 200mm f/1.8L and EF 300mm f/2.8L. •Extender EF 1.4x is for exclusive use with EF 200mm f/1.8L, EF 300mm f/2.8L and EF 600mm f/4L.
 •Life-Size Converter EF is for exclusive use with Compact-Macro EF 50mm f/2.5. •"A" series lenses are autofocus only.

ACCESSORIES

Look to EOS system accessories for the right tools to broaden your photographic outlook.

QUARTZ DATE BACK E

Interchange the standard EOS camera back with the Quartz Date Back E for simple data recording. You can choose from five modes:

- Auto date (day/month/year, month/day/year, or year/month/day) good through the year 2029
- Day/hour/minute
- Arbitrary six-digit number
- Frame counter number
- Off

With a film loading date check function, you can find out when film was loaded at the touch of a button.



memory. It can also print that data, with comments, directly on your negatives.

The Keyboard Unit E simplifies data input with a choice of three languages. And combined with the Interface Unit TB, the back lets you access data from your camera on a personal computer.



With the Technical Back E, data imprinting may be impossible in some conditions. Contact your nearest Canon branch office listed on the back of the catalog.

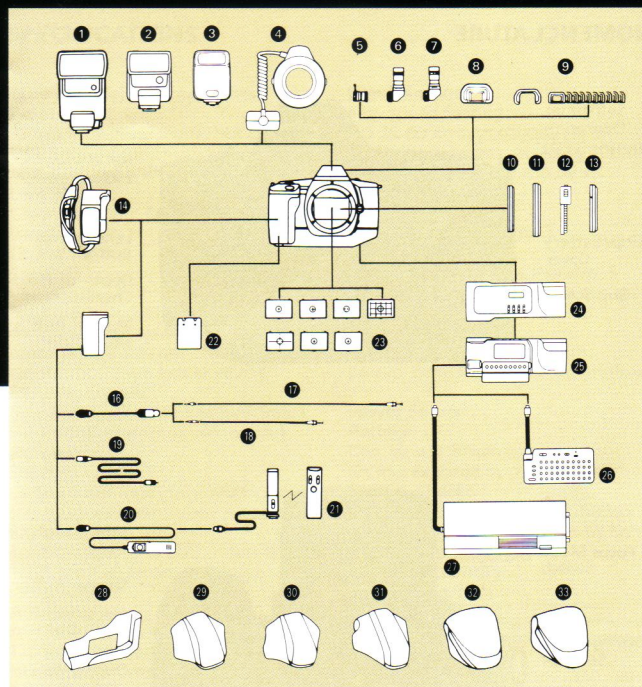
TECHNICAL BACK E

The Technical Back E offers sophisticated camera control and data management features. For instance, you can use it to select up to *nine* continuous exposures during Auto Exposure Bracketing, or to create your own programming graphs.

You can store shooting data—apertures, shutter speeds and mode settings—for up to 22 rolls of 36-exposure film in the back's

INTERCHANGEABLE FOCUSING SCREENS

Six focusing screens are available in addition to the standard New Laser Matte/AF Frame Screen supplied with the camera.



ACCESSORIES

- 1 Speedlite 430EZ
- 2 Speedlite 300EZ
- 3 Speedlite 160E
- 4 Macro Ring Lite ML-3
- 5 Magnifier S
- 6 Angle Finder A2
- 7 Angle Finder B
- 8 Eye Cup E
- 9 Dioptic Adjustment Lenses E with rubber frame
- 10 Filters (52mm diameter)
- 11 Filters (58mm diameter)
- 12 Circular Polarizing Filter PL-C (48mm diameter drop-in type)
- 13 Circular Polarizing Filter PL-C (52mm, 58mm and 72mm diameter screw-in type)
- 14 Grip GR10 (Grip L)
- 15 Grip GR20
- 16 Cable Release Adapter T3
- 17 Release 50
- 18 Release 30
- 19 Extension Cord 1000T3
- 20 Remote Switch 60T3
- 21 Wireless Controller LC-2
- 22 Lithium Battery Pack
- 23 Focusing Screens E
- 24 Quartz Date Back E
- 25 Technical Back E
- 26 Keyboard Unit E
- 27 Interface Unit TB (IBM-PC)
- 28 Back Case
- 29 Front Case S
- 30 Front Case L
- 31 Front Case LL
- 32 Snap Case SA-4
- 33 Snap Case SB-4

AF-COMPATIBLE POLARIZING FILTERS

Canon's 48mm, 52mm, 58mm, and 72mm circular polarizing filters are especially designed for autofocus use.



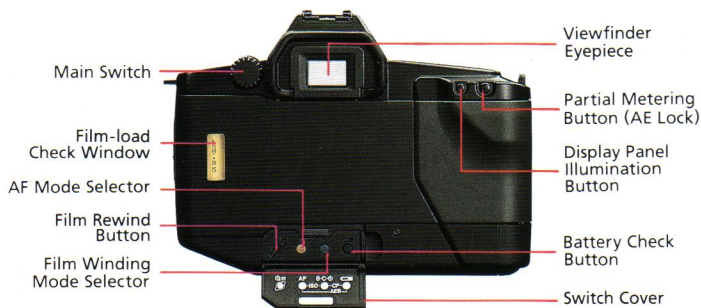
DIOPTRIC ADJUSTMENT LENSES

Dioptic adjustment lenses feature eyeglass correction right into the viewfinder. Ten levels of correction are available.

INTERCHANGEABLE GRIPS

In addition to the standard palm grip, Canon offers two optional grips, the GR10 for large hands and the GR20 with a remote-control terminal.

NOMENCLATURE



SPECIFICATIONS

Type and Major Components

Type: 35mm focal plane shutter SLR (Single-Lens Reflex) camera with autofocus, auto exposure and built-in motor drive.

Lens Mount: Canon EF Mount (electronic signal transfer system).

Usable Lenses: Canon EF lenses.

Viewfinder: Fixed eye-level pentaprism. Gives 94% vertical and horizontal coverage of actual picture area and 0.8X magnification with 50mm lens at infinity.

Focusing Screen: New laser-matte screen with AF frame. Six optional interchangeable screens are available.

Shutter: Vertical-travel focal plane shutter with soft-touch electromagnetic release.

Shutter Speed: 1/2000-30 sec. and bulb. X-sync is 1/125 sec. Can be set in 1/2-step increments.

Autofocus

AF Control System: TTL-SIR (Secondary Image Registration) phase-detection type using BASIS (Base-Stored Image Sensor). Two modes available: One-shot and Servo with Focus Prediction. Manual focusing possible.

AF Working Range: EV1-18 at ISO 100.

AF Auxiliary Light:

Specified Canon Speedlites automatically project light through an ultra-bright LED (peak sensitivity: 700nm).

Exposure Control

Light Metering: TTL full aperture metering using SPC (Silicon Photocell). Two metering patterns available: 6-Zone Evaluative Metering and Partial Metering (approx. 6.5% of the picture area).

Metering Range: EV-1-20 with f/1.4 lens at ISO 100 or equivalent.

Shooting Modes:

1. "Green Zone" full auto shooting mode with PIC (7 settings)
2. Intelligent Program AE with Variable Program Shift Function
3. Depth-of-Field AE
4. Shutter-Priority AE
5. Aperture-Priority AE
6. Manual
7. Flash AE (A-TTL and TTL program flash AE with specified Canon Speedlites)

Exposure Compensation:

+/- 5 steps in 1/2-step increments.

Auto Exposure Bracketing:

+/- 5 steps in 1/2-step increments. Three continuous exposures are taken in sequence: one under, one at the standard metered value and one over.

Depth-of-Field Preview:

With Depth-of-Field Check Button.

Film Transport

Film Speed Setting: ISO 25-5000; automatically set in 1/3-step increments according to DX code. ISO 6-6400 can also be set manually.

Film Loading: Automatic (approx. 1 sec.).

Film Wind: Automatic. Two modes available: S (Single Frame) and C (Continuous at up to 5 frames per second).

Film Rewind: Automatic (approx. 6 sec. with 24-exp. film). Mid-roll rewind possible.

Power Source

Battery: One, six-volt lithium battery pack (2CR5). Replaced by removing grip.

Battery Check: By pressing the battery check button. Three energy levels are shown by bar marks in the display panel.

Shooting Capacity: (with 24-exp. film)

Temperature	Regular shooting	Continuous shooting
Normal (68°F/20°C)	75 rolls	150 rolls
Low (-4°F/-20°C)	8 rolls	15 rolls

Other

Remote Control: By using Grip GR-20 and Remote Switch 60T3.

Data Display: In the viewfinder and LCD display panel.

Multiple Exposures: Up to nine exposures can be preset. Automatically cleared upon completion.

Self-Timer: Electronically controlled with a 10-sec. delay.

Dimensions

Size: 5-13/16" (W) x 4-1/4" (H) x 2-5/8" (D) (148 x 108.3 x 67.5mm)

Weight: 23.7 oz. (670g) without battery. 25.1 oz. (710g) with battery.

All data are based on Canon's Standard Test Method. Subject to change without notice.

The Canon EOS 630 will give optimum performance together with specially designed Canon EF lenses, flash units and other Canon brand accessories. It is possible that the use of incompatible lenses or other accessories may result in unsatisfactory performance or damage to your Canon EOS 630. We, therefore,

suggest the use of Canon EF lenses and accessories.

Damage to your Canon EOS 630, as a result of malfunction or improper connections caused by the use of incompatible products, may void the product warranty.