

WILSONWERKS ARCHIVES

This camera manual is for reference and historical purposes, all rights reserved.

This cover page is copyrighted material. This document may not be sold or distributed without the express consent of the publisher.

©2008 wilsonwerks Llc

A SYMBOL IS A PROMISE.



Canon

EOS ELAN II ELAN II E

Canon's high-performance cameras help photographers, from snapshotters to pros, get just the images they want; filled with split-second action and excitement.

Canon

SO ADVANCED...IT'S SIMPLE

U.S.A. CANON U.S.A., INC. HEADQUARTERS
One Canon Plaza, Lake Success, NY 11042, U.S.A.
CANON U.S.A., INC. NEW JERSEY OFFICE
100 Jamesburg Rd., Jamesburg, NJ 08831, U.S.A.
CANON U.S.A., INC. ATLANTA OFFICE
5625 Oakbrook Parkway, Norcross, GA 30093, U.S.A.
CANON U.S.A., INC. CHICAGO OFFICE
100 Park Blvd., Itasca, IL 60143-2693, U.S.A.
CANON U.S.A., INC. LOS ANGELES OFFICE
15955 Alton Pkwy., Irvine, CA 92718, U.S.A.
CANON U.S.A., INC. SANTA CLARA OFFICE
2051 Mission College Blvd., Santa Clara, CA 95054, U.S.A.
CANON U.S.A., INC. DALLAS OFFICE
3200 Regent Blvd., Irving, TX 75063-3145, U.S.A.
CANON U.S.A., INC. HONOLULU BRANCH
210 Ward Ave., Suite 200, Honolulu, HI 96814, U.S.A.
CANON U.S.A., INC. WASHINGTON, D.C. OFFICE
2110 Washington Blvd., Suite 150, Arlington, VA 22204, U.S.A.

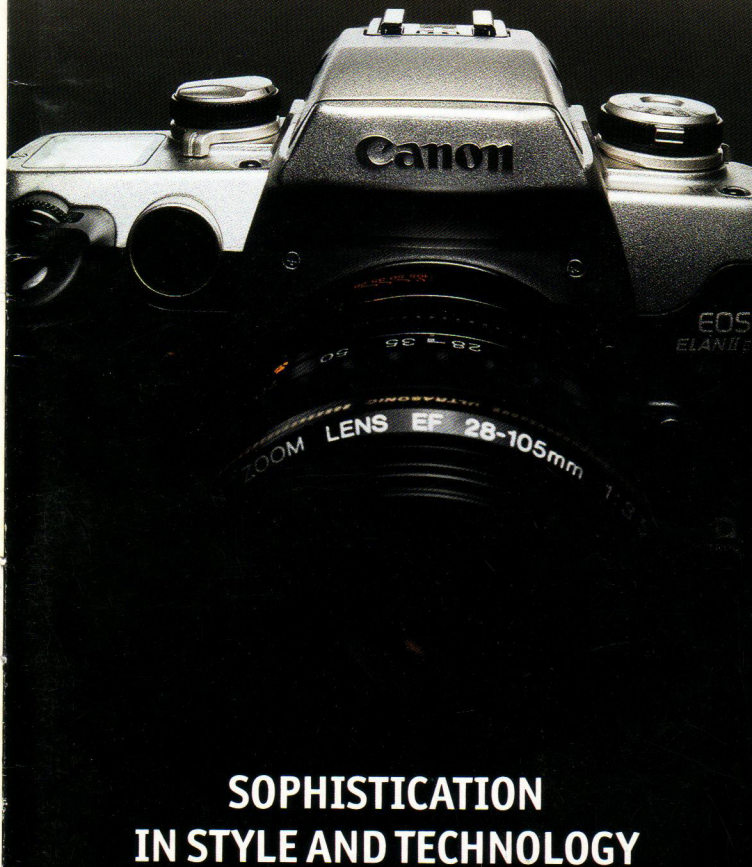
CANADA CANON CANADA INC. HEADQUARTERS
6390 Dixie Road, Mississauga, Ontario L5T 1P7, Canada
CANON CANADA INC. MONTREAL OFFICE
5990 Côte de Liesse, Montreal, Quebec H4T 1V7, Canada
CANON CANADA INC. CALGARY OFFICE
2828 16th Street, N.E. Calgary, Alberta T2E 7K7, Canada

MEXICO CANON MEXICANA, S. DE R.L. DE C.V.
Calzada de Tlalpan 479, Col. Alamos C.P. 03400
Deleg. B. Juárez, México, D.F., México

LATIN AMERICA CANON LATIN AMERICA
6505 Blue Lagoon Dr., Suite 325, Miami, FL 33126, U.S.A.

JAPAN CANON INC.
30-2, Shimomaruko 3-Chome, Ohta-ku, Tokyo 146, Japan

Web Site: <http://www.usa.canon.com>



SOPHISTICATION
IN STYLE AND TECHNOLOGY

ELAN. The name means dash... flair... sophistication. And never before has that sophistication been more evident than in the EOS ELAN II and IIe, where dramatic styling and innovative technology combine to form a unique image-making tool.

Like a sports car that begs to be driven, ELAN II evokes your imagination. From the first moment you hold it in your hands and bring it to your eye, a creative synergy is established. The ELAN IIe, with advanced Eye Controlled Focus™, follows your every glance to assure razor-sharp results. An extension of yourself you'll never want to leave behind, you can be confident its distinctive styling and whisper-quiet operation make ELAN II welcome anywhere.



EOS ELAN II e

EOS ELAN II



EOS
ELAN II e


EYE CONTROL

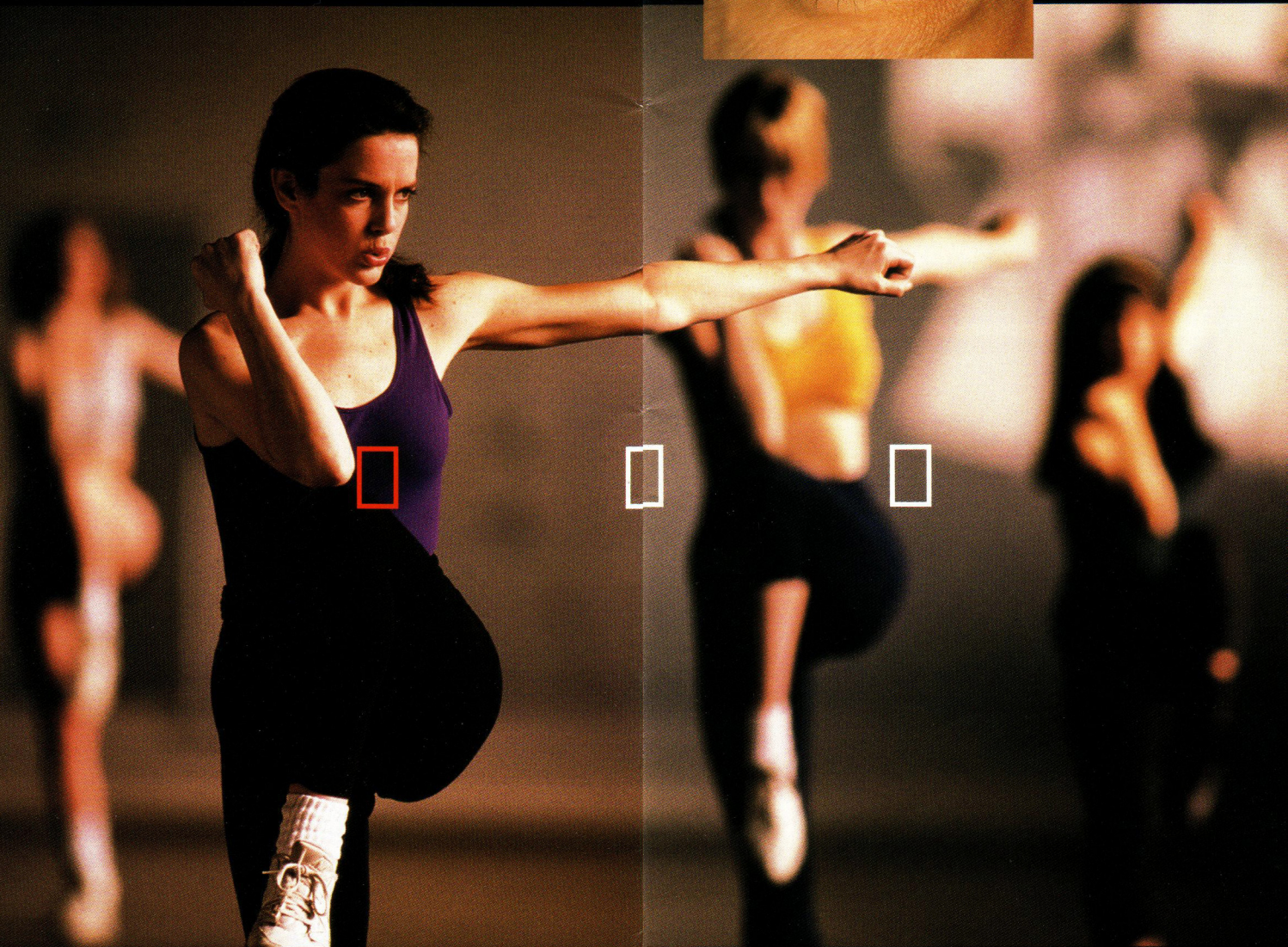
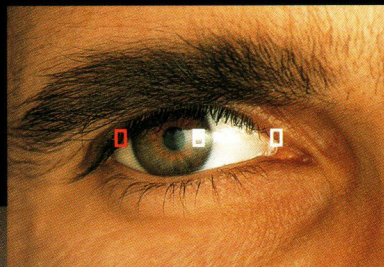
AUTOFOCUS REDEFINED

Sharp pictures. A compelling reason to choose the EOS ELAN II or ELAN II ϵ with sophisticated three-point autofocus. Most autofocus cameras, even professional 35mm SLR models, feature single-point autofocus – with a central autofocus mark in the center of the viewfinder, like point-and-shoot snapshot cameras. But creative photography often calls for creative composition – with your subject off-center – making the single-point autofocus system inconvenient.

ELAN II, with three-point autofocus, gives you much more flexibility. You can select from three focus points – left,

center or right – to match your composition. The amazing ELAN II ϵ with advanced Eye Controlled Focus™ intuitively follows your glance – it knows what you're looking at – and lets you compose and focus in one continuous, uninterrupted action. Advanced Eye Controlled Focus™ operates in vertical

shooting situations, too, and assures you of a razor-sharp image every time.



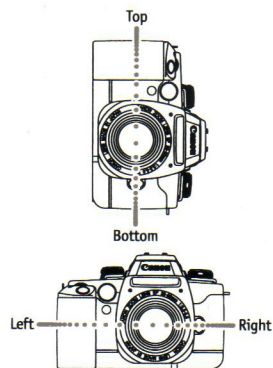
Exclusively EOS ELAN II ϵ ... Eye Controlled Focus™, No Matter How You Hold the Camera

Photography provides an endless variety of subjects, and every subject provides an endless variety of creative compositions. The EOS ELAN II ϵ makes it easy for you to concentrate on composition, rather than camera function. The three-point Eye Controlled Focus™ system almost always puts a focusing mark where you want it... where you're looking! This intuitive interface joins you and the camera as never before. For creative images as never before.



ELAN II ϵ – Uniquely Yours

With its advanced Eye Controlled Focus™, the EOS ELAN II ϵ literally becomes an extension of your vision. After you complete a simple calibration procedure to customize the system for your eyesight, the camera stores your personal data in one of three calibration channels. An intelligent program accumulates even more data when you add calibrations to your channel during various indoor and outdoor lighting conditions.

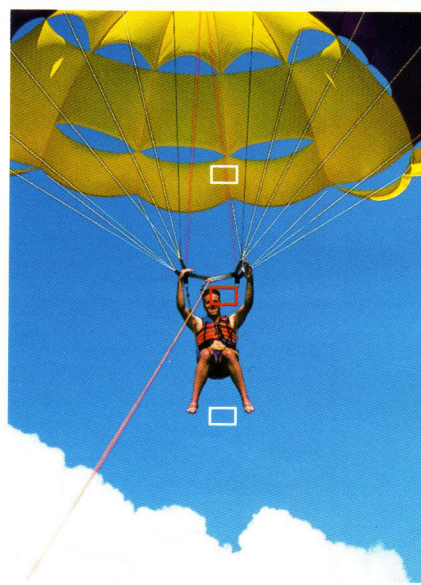


The EOS ELAN II ϵ 's amazing man-machine interface is achieved by calibrating the system to recognize and react to your eye and its movements as you compose subjects in the viewfinder. Separate calibrations for up to three people can be stored in memory.

Eye Controlled

3-Point Auto Focus

Bring the EOS ELAN II ϵ to your eye and the part of your subject most important to you may not be in the center. Creative photography often involves an off-center composition of subject and back-ground. But as you view your subject, the ELAN II ϵ will actually follow the movement of your eye as it comes to rest when you concentrate on your subject, and one of three focusing marks in the viewfinder will come alive and glow as you sight through it. Thus, ELAN II ϵ knows what you're looking at. Shoot a landscape, create a portrait. Advanced Eye Controlled Focus™ functions whether the ELAN II ϵ is held in a horizontal or vertical position.





AI Servo Focus

No longer will fast-moving subjects pose a challenge. If you can follow them with your eye, ELAN II ϵ can follow your eye to shift from focus point to focus point, constantly working to keep your subject sharp until the decisive moment when you depress the shutter release button. Combining advanced Canon autofocus technologies including predictive autofocus and the Base Stored Image Sensor (BASIS), with the high clock speed of its 16-bit computer for fast response time, the ELAN II ϵ represents the cutting-edge in autofocus. Set the film transport for continuous shooting and create an action sequence a pro sports photographer would be proud of.



AI Focus

Standard operating mode for EOS ELAN II and II ϵ ... unheard of in other cameras. As you view your subject the ELAN II evaluates what it "sees", determines the subject area and sets focus (One-Shot AF or AI Servo AF) and exposure accordingly. Since all indications appear in the viewfinder, you can always use your creative judgement and override AF or AE functions, but in most cases, the 16-bit computer will do it faster and more reliably than you can.

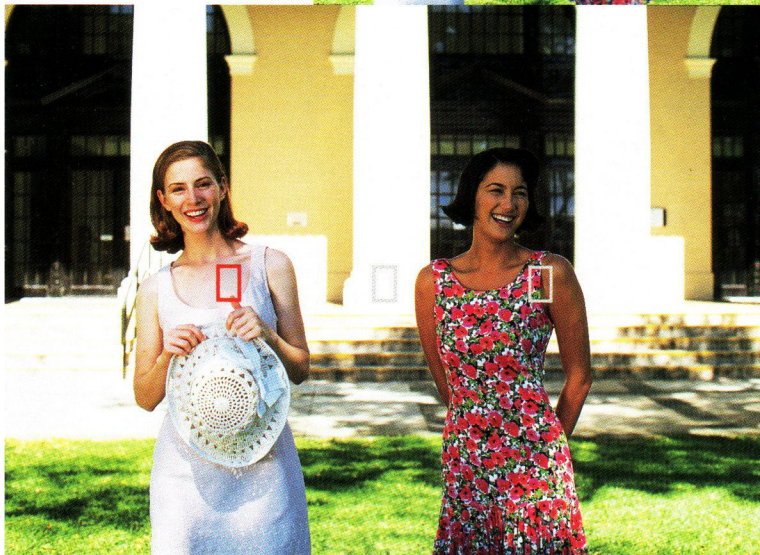
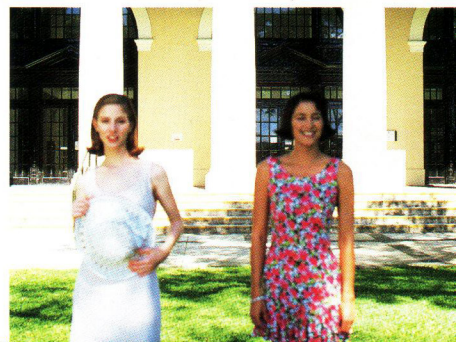
One-Shot Auto Focus

You compose your subject, allow your eye to seek out the appropriate focusing mark and with one touch of the shutter release button, you lock in precise focus and perfect exposure.

The Canon Advanced Integrated Multi-Point control system (AIM) takes the focus point you select and makes it the basis for light measurement of your subject as well. Standard on both the ELAN II and II ϵ , One-Shot AF can be tied to any of the three focusing marks you select.

Focus & exposure are linked for optimum results

Focus & exposure are not linked



THE CREATIVE INTERFACE

The EOS ELAN II is a perfect example of form following function. Key controls are easy to understand, easy to use, and positioned for instant access. Feedback confirming control inputs and camera functions is provided via two comprehensive displays.

Command Dial and Metering Mode Lever

Select any of ten exposure control modes, set Custom Functions or Eye Controlled Focus™ Calibration, or power down and Lock the EOS ELAN II just by turning the Command Dial. Select metering patterns with the clearly- marked three-position Metering Mode Lever, located beneath it.

Quick Control Dial

Located on the camera back, literally under your thumb, it provides instant exposure compensation adjustment in daylight and flash shooting modes; it also sets lens aperture when shooting in Manual mode.

AF Mode Dial and Film Advance Mode Lever

Three click-stops set One-Shot AF, AI Focus or AI Servo Focus modes on the AF Mode Dial. Two clicks set either Single Frame or Continuous Shooting (2.5 fps) with the Film Advance Mode Lever.

LCD Panel

Every bit of information you require, from film speed and how many exposures remain to self-timer count-down is accessible.



Sophisticated Auto Exposure Control

Sophisticated, not complicated. EOS ELAN II offers advanced automatic exposure control for perfect color in any light – indoors or out, day or night. It's as automatic as you want it to be, but as much under your command as required to achieve a creative result. Controls fall readily to hand, designed and marked for confidence at your fingertips.

Canon's exclusive AIM* system integrates standard AE, flash AE and autofocus information for optimum results. Focus on a subject off-center to the left, and ELAN II will meter that area, for perfect exposure where it's needed most.

* Advanced Integrated Multi-Point control



Picture taken with standard TTL system



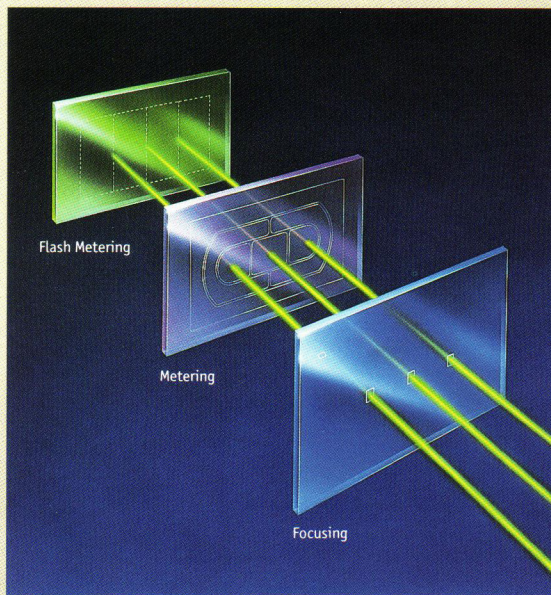
Picture taken with E-TTL system

AIM, Only Canon Integrates Autofocus and Metering for Optimum Results

The Canon EOS ELAN II and II ϵ use a 6-zone SPC (silicon photocell) sensor for extremely accurate metering. The zones used for Evaluative Metering coincide with the autofocus zones, allowing a selectable AF area – either manually or via the Eye Controlled Focus™ system in the ELAN II ϵ – to also determine the metering area. Thus, autofocus and automatic exposure control functions operate together synergistically, for optimum results under the widest variety of shooting conditions.

The system also functions with flash, whether the built-in, pop-up flash is activated or the optional Speedlite 380EX is attached*. Canon's advanced flash technology, TTL and even E-TTL metering systems, are also integrated into the equation. In short, indoors or out, day or night, the Canon AIM system combines all the talent and technology of the ELAN II to identify the subject, assure sharp focus, and deliver perfect exposure – even when daylight fill-flash is used.

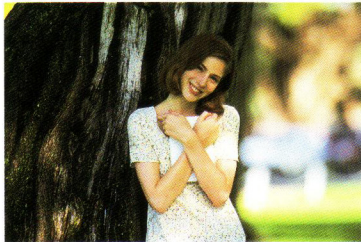
* ELAN II and II ϵ are also compatible with current EOS System Speedlites.



AIM System

Metering – More Creative Choices

The EOS ELANII can meet the needs of any shooting situation or creative interpretation.... A separate, always accessible selector provides instant switchover from Six-Zone Evaluative Metering, the first choice for most subjects and especially useful in challenging situations with a variety of light and shadow; to Partial Area Metering (9.5%) when exposure of a single subject is paramount; or Center-Weighted Average Metering, ideal for everyday subjects.



Six-Zone Evaluative Metering

For optimum performance under a wide variety of conditions – even backlit subjects – Evaluative

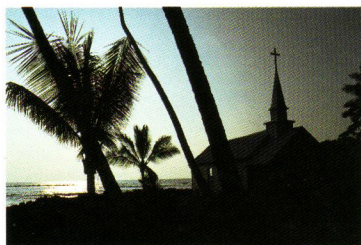
Metering divides the viewfinder area into six discrete zones, identifies your subject, measures background and foreground lighting, contrast between them and determines the proper exposure for the conditions, based on algorithms developed from countless picture-taking situations. The Canon AIM system takes the focusing point selected into account as well.



Partial Area Metering Linked to 3-Point AF

Measures 9.5% of the viewfinder around any chosen focusing point,

or using the ELANII Eye Controlled Focus™, the metered area shifts to match the focusing point automatically! Ideal for precision exposure control of a single subject, the Canon AIM system works to assure perfect exposure and autofocus with any subject.



Center-Weighted Average Metering

Good for everyday shooting situations. Measures the entire viewfinder area, with emphasis on the center.

Choose Any Exposure Control Mode You Need: EOS ELANII Puts Them All at Your Command

Right on top and always available is the Command Dial which lets you select from every exposure control mode instantly.



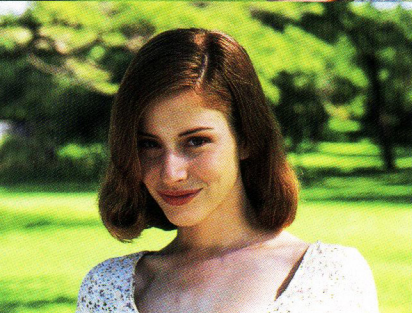
Intelligent Program AE

*Based on film speed, lighting conditions and the focal length of the lens in use, Intelligent Program AE selects a combination of shutter speed and lens aperture for greatest possible exposure control range – perfect when you want to be ready to shoot at a moment's notice. A touch of the Main Dial lets you bias the program towards higher shutter speeds to stop action or smaller apertures for greater depth-of-field. **P***

Shutter-Priority AE

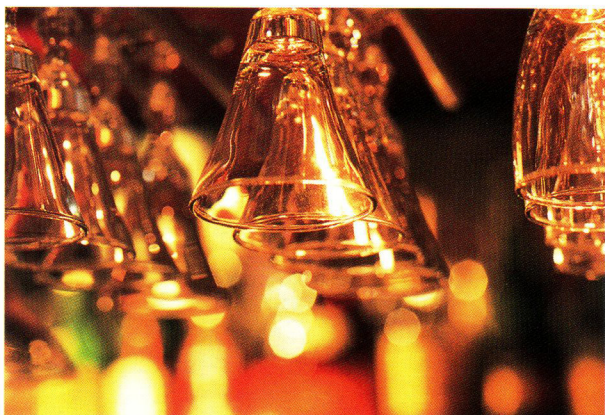
*Choose the speed you want, up to 1/4000th of second, and ELANII will match it with the appropriate aperture for best exposure – ideal for sports or moving subjects. Shoot at high speeds to freeze motion, slow speeds for an intentional blur. Shutter speeds can be selected in 1/2 stops. **Tv***





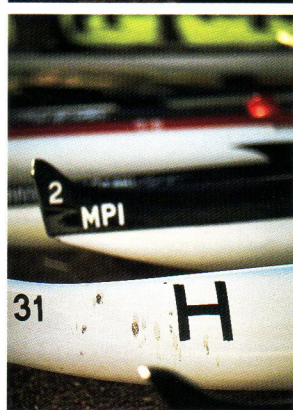
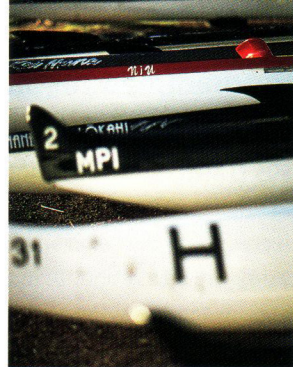
Aperture-Priority AE

When control over depth-of-field is important, choose any available aperture and the EOS ELAN II will match it with the appropriate shutter speed for best exposure. Ideal for portraiture, landscapes, or any subject for which control of background focus is important. Apertures can be selected in 1/2 stops. **Av**



Manual Exposure Control

Whether you're a purist or just want to experiment, the EOS ELAN II's incredible array of automation provides the most important option of all... you can turn it off. Choose any combination of shutter speed and lens opening, use the built-in metering systems or ignore them entirely. You never lose control. You exercise it. **M**



Depth-of-Field AE Mode

Use any of the three focusing marks to set the fore and aft limits of a "sharp zone" within your photo. With ELAN II E in Eye Controlled Focus™ Mode, you can glance at the foreground and background areas to set DEP mode automatically.

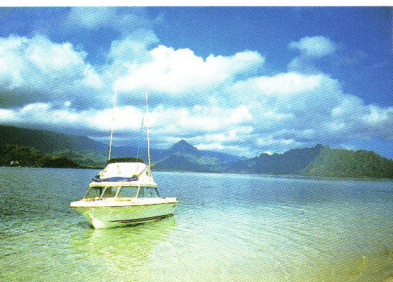
DEP



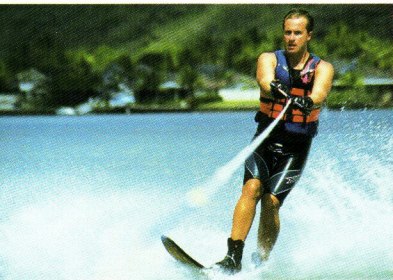
Programmed for Success

When your image takes precedence over everything else, EOS ELAN II lets you concentrate on your subject with Programmed Image Control (PIC) modes. Select the green rectangle on the Command Dial for totally automatic, worry-free operation. In low light, the built-in flash will pop-up and fire automatically when needed. If subject motion is detected, ELAN II will automatically shift from One-Shot to AI Servo Focusing.

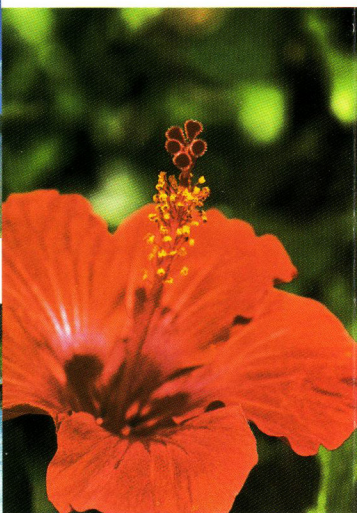
Symbols representing Portrait, Landscape, Close-Up and Sports instantly access pre-programmed combinations of autofocus, metering and exposure control modes ideally suited for these situations. It's simple, but definitely sophisticated.



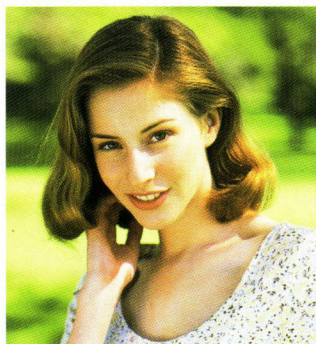
Landscape 



Sports 



Close-Up 

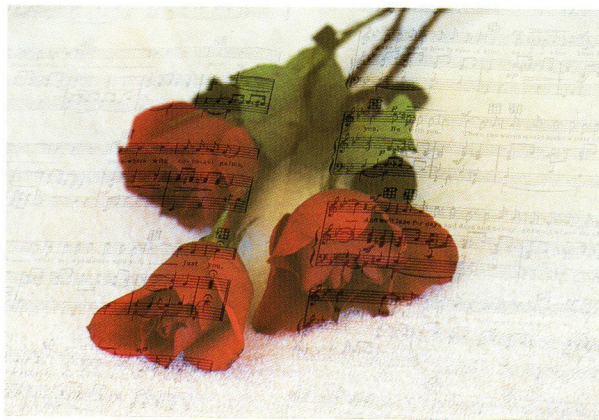


Full Auto 

 Portrait

Creative Tools

The EOS ELAN II provides the brush and palette to achieve your creative goals. Just add imagination.



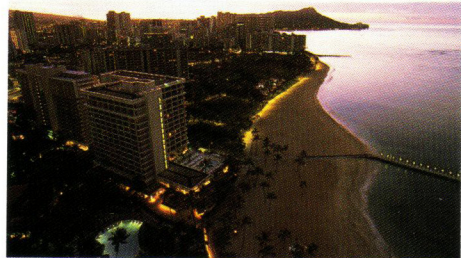
Multiple Exposure Control

Once strictly limited to studio photographers, EOS ELAN II adds this creative technique to your repertoire. Program up to nine exposures on a single frame of film for dazzling special effects results.



Auto Exposure Bracketing

For a once-in-a-lifetime photo, or when you're debating whether a subject might look better if slightly under or over-exposed, EOS ELAN II will assure you of at least one good shot by automatically taking three in rapid succession: the first at proper exposure, the next, under-exposed, and the third over-exposed – by 1/2 stop up to 2 stops.





Whisper Drive™ Quiet Film Transport

When it's so quiet you can hear a pin drop, no one wants to hear the KA-CHUNK, whirr, KA-CHUNK, Whirr of a typical 35mm SLR camera. Whether outdoors shooting nature or indoors shooting an intimate gathering, EOS ELAN II allows you to shoot quietly, thanks to Whisper Drive™ film transport technology that reduces film advance noise to less than one-third that of most SLR cameras, even when shooting in Continuous mode at 2.5 fps! At the end of the roll, choose from quietly rewinding in six seconds or silently rewinding in twelve.



Wired and Wireless Remote

Shoot from a distance with wireless infrared remote control*. Great for nature studies when you can't get too close. Or use the Canon RS-60E3 wired remote*, when your camera is tripod-mounted and/or for photomicrography or long time exposures to prevent "camera shake."

Self-Timer

Get in the picture yourself, or use the self-timer to trip the shutter release ten seconds after you press the button.

* optional

Custom Function Control

The EOS ELAN II is the camera of choice for discriminating photographers. Custom Function Control gives you twenty-three options in customizing the camera to meet your individual needs and preferences.

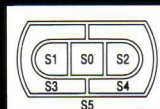
EOS ELAN II/IIc CUSTOM FUNCTIONS

Function Number	Function Description	Set To	Final Outcome
CF-1	Film Rewind Mode	0	• Enables automatic silent rewind at end of film
		1	• Enables automatic high-speed rewind at end of film
CF-2	Film Leader Position	1	• Rewinds the film into the cartridge
		2	• Leaves the film leader outside the cartridge
CF-3	Film Speed Setting Mode	0	• Automatic DX code setting
		1	• Manual film speed setting
CF-4	AE Lock, AF Lock and Depth-of-Field Preview	0	• Enables AF operation by pressing the shutter release button halfway and enables AE lock with the AE lock button
		1	• Enables AF operation by pressing the AE lock button and enables AE lock by pressing the shutter release button halfway
		2	• Enables AF operation by pressing the shutter release button and enables the AE lock button to stop down aperture
CF-5	Mirror Lockup and Self-Timer	0	• Enables normal self-timer and remote-control operation
		1	• Enables the shutter release button to lock up the mirror and release the shutter two seconds later. (Mirror-Lockup is also possible with the optional Remote Controller RC-1)
CF-6	Flash Sync Timing	0	• First curtain synchronization
		1	• Second curtain synchronization (with built-in flash and optional Speedlite 380EX only)
CF-7	AF Assist Beam	0	• Enables auto emission of AF assist beam
		1	• Disengages AF assist beam
CF-8	Partial Metering and FE Lock Linkage to the Focusing Point	0	• Links partial metering and FE lock to center
		1	• Links partial metering and FE lock to focus point
CF-9	Shutter Speed Setting - AV & Flash	0	• Sets shutter speed automatically
		1	• Sets shutter speed to 1/125 second
CF-10	Focusing Point Flashing	0	• Enables focusing point flashing
		1	• Disengages focusing point flashing
CF-11	Eye-Activated Depth-of-Field Preview (EOS ELAN IIc Only)	0	• Enabled
		1	• Disengaged

STUDIO EFFECTS WITHOUT THE STUDIO

With the EOS ELAN II and II E, it's easy to obtain professional results that rival those of a studio photographer. Control the light to achieve the effect you want – choosing from Flash Exposure Compensation, Second Curtain Sync, and a host of other creative controls. Canon's AIM System links exposure information to the AF system in real time, letting you concentrate on capturing peak expression, even with off-center subjects. E-TTL evaluative flash metering, available exclusively with the optional Speedlite 380EX, balances ambient exposure and flash illumination automatically for a natural look. 4-zone, 3 point TTL flash metering is also provided for use with conventional EOS Speedlites and the camera's built-in flash.

6-Zone E-TTL Evaluative Metering Sensor



4-Zone 3 point TTL Flash Metering



E-TTL Flash System

The exclusive Canon E-TTL flash system, designed around the optional Speedlite 380EX provides far superior results when compared with ordinary, TTL systems.

TTL Flash System

The Canon AIM system functions with both the built-in, pop-up flash and current EOS Speedlites to link automatic flash exposure control to the AF system, assuring perfect exposure of your subject.



Hidden Talent

When you can't carry more than the camera itself, EOS ELAN II provides its own light source: a handy built-in, pop-up flash you'll never leave behind. Complete with a red-eye reduction feature, the built-in flash provides TTL and advanced creative abilities including 2nd curtain sync. When not in creative modes, the flash pops-up and fires automatically when needed. Otherwise, the touch of a button raises and activates the flash.

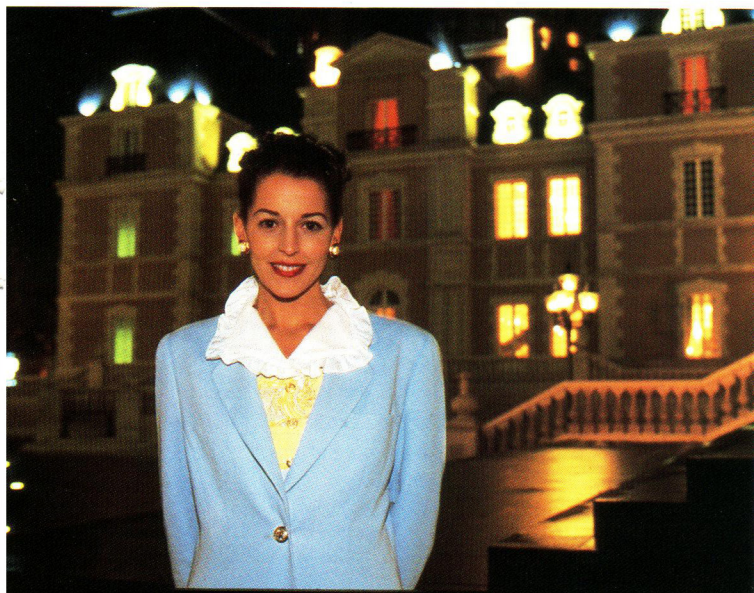


Red-Eye Reduction is provided by a bright lamp in the flash housing that glows when you depress the shutter release half way. Under low-light conditions, a focus-assist beam is emitted to assure good AF operation which further contributes to red-eye reduction.

Slow Sync., or combination flash/time-exposures, are handled automatically. The AIM system integrates low-light exposure control, flash exposure control and autofocus functions.



Second-Curtain Sync. makes light streaks appear in the path behind the moving subject, by firing the flash at the end of the exposure.

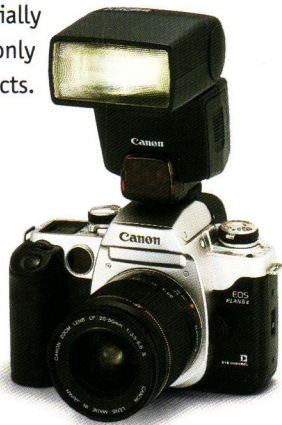


E-TTL for Perfect Exposure, High-Speed Sync. and FE Lock, for a Flash of Creativity

w/optional Speedlite 380EX

No other camera offers all the features and creative possibilities of EOS ELAN II and II ϵ when the optional Speedlite 380EX is attached. Nothing bridges the gap between flash shooting and daylight photography like the Canon E-TTL system, developed especially to take advantage of new technology only found in these advanced Canon products.

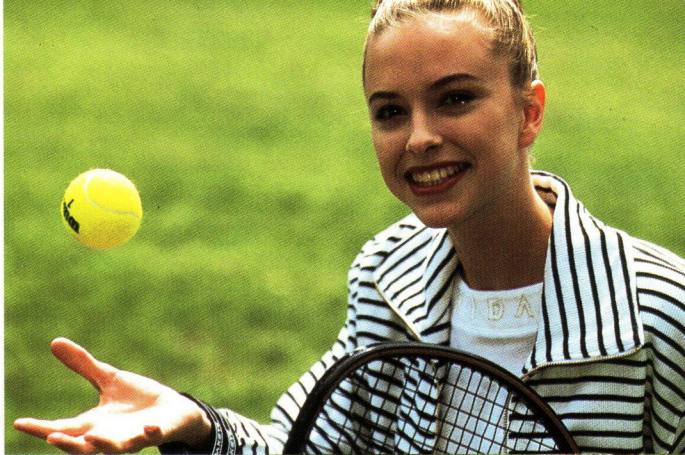
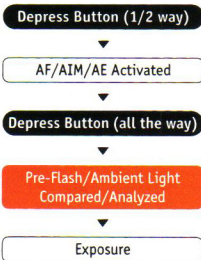
Ordinary flash exposure



E-TTL – Another Canon Exclusive

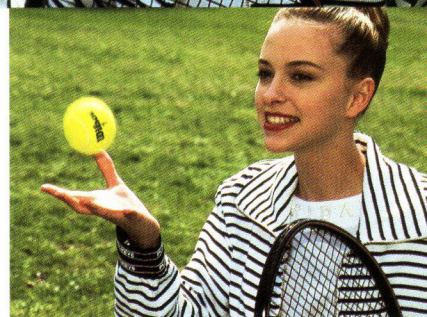
E-TTL (Evaluative Through-The-Lens) metering is a major step forward in flash exposure technology. Compared with A-TTL systems that use a pre-flash for distance measurement only, E-TTL measures ambient light, fires an instant pre-flash, analyzes the difference and sets the camera for a natural-looking balance between subject and background. The AIM System also ties in autofocus information to assure proper exposure of your subject even if positioned off-center.

Flash exposure w/AIM system



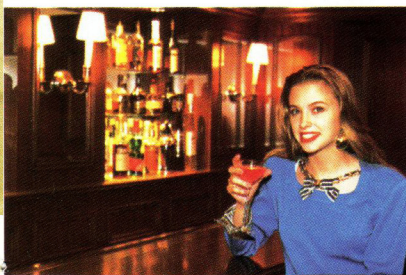
Suspend Reality with 1/4000th sec. Sync.

Freeze a falling snowflake... stop a home-run ball in mid-flight. When used in FP mode, the Speedlite 380EX provides Full Range Shooting at speeds up to 1/4000th second. Take advantage of this greatly expanded shooting range to create shallow depth-of-field, even at close range with high speed film, or eliminate ambient light to totally isolate your subject.



Without High Speed Sync. mode

Without FE Lock, off-center subject is improperly exposed



FE Lock allows the AE lock button to be used to lock flash exposure when the dial-selected focusing mark is over the subject, or, with the EOS ELAN II ϵ , when your eye selects the focusing point. You can recompose and work with your subject for up to sixteen seconds while the correct flash exposure data is retained in memory.



YOU CAN TAKE IT WITH YOU

You can take your EOS ELAN II or II ϵ camera anywhere you go in style and in safety with carrying cases and equipment bags especially designed by Canon. You can custom tailor your ELAN II system to meet your personal photographic needs, whether you shoot portraits, architecture or just Aunt Martha. The touch of a button lets you switch from a wide angle fish-eye to super-telephoto lenses. You'll want the Speedlite 380EX, a remote control, and, perhaps, one of two optional high-powered battery packs. Only Canon offers the ELAN II, and only Canon offers a system of EF lenses and accessories that can take full advantage of its creative potential.



EF Lenses

The EOS ELAN II offers you all the creativity and flexibility of the Canon EOS system of over 40 EF lenses, ranging from fish-eye

to super-telephoto, with a wide choice of versatile zoom lenses. All feature unique Canon technology, including Ultrasonic (USM) motors in selected lenses for instantaneous response and near-silent operation, lead-free multi-coated elements for reduced flare, and, in the "L" series professional lenses, aspherical elements, Fluorite and rare-earth glass for unsurpassed results. For high performance photography with your ELAN II camera, only original Canon EF lenses are recommended.



Canon EF Lenses	Focus Drive	Angle of View (Diagonal)	Groups/ Elements	Minimum Aperture
				(f)
Single Focal Length				
Fish-eye EF 15mm f/2.8	AFD	180°	7-8	22
EF 14mm f/2.8L USM	Ultrasonic	114°	10-13	22
EF 20mm f/2.8 USM	Ultrasonic	94°	9-11	22
EF 24mm f/2.8	AFD	84°	10-10	22
EF 28mm f/1.8 USM	Ultrasonic	75°	9-10	22
EF 28mm f/2.8	AFD	75°	5-5	22
EF 35mm f/2	AFD	63°	5-7	22
EF 50mm f/1.0L USM	Ultrasonic	46°	9-11	16
EF 50mm f/1.4 USM	Ultrasonic	46°	6-7	22
EF 50mm f/1.8II	MM	46°	5-6	22
EF 85mm f/1.2L USM	Ultrasonic	28°30'	7-8	16
EF 85mm f/1.8 USM	Ultrasonic	28°30'	7-9	22
EF 100mm f/2 USM	Ultrasonic	24°	5-8	22
EF 135mm f/2L USM	Ultrasonic	18°	8-10	32
EF 135mm f/2.8 w/Soft Focus	AFD	18°	6-7	32
EF 200mm f/1.8L USM	Ultrasonic	12°	10-12	32
EF 200mm f/2.8L II USM	Ultrasonic	12°	7-9	32
EF 300mm f/2.8L USM	Ultrasonic	8°15'	7-9	32
EF 300mm f/4L IS USM	Ultrasonic	8°15'	11-15	32
EF 300mm f/4L USM	Ultrasonic	8°15'	7-9	32
EF 400mm f/2.8L II USM	Ultrasonic	6°10'	9-11	32
EF 400mm f/5.6L USM	Ultrasonic	6°10'	6-7	32
EF 500mm f/4.5L USM	Ultrasonic	5°	6-7	32
EF 600mm f/4L USM	Ultrasonic	4°10'	8-9	32
EF 1200mm f/5.6L USM▼	Ultrasonic	2°05'	10-13	32
Macro				
EF 50mm f/2.5 Compact Macro	AFD	46°	8-9	32
EF 100mm f/2.8 Macro	MM	24°	9-10	32
EF 180mm f/3.5L Macro USM	Ultrasonic	13°40'	12-14	32
Tilt-Shift*				
TS-E 24mm f/3.5L	Manual	84°	9-11	22
TS-E 45mm f/2.8	Manual	51°	9-10	22
TS-E 90mm f/2.8	Manual	27°	5-6	32
Extenders				
EF 1.4x**	-	-	4-6	-
EF 2x**	-	-	5-7	-
Life Size Converter EF ***	-	-	3-4	-
Zooms				
EF 17-35mm f/2.8L USM	Ultrasonic	104°-63°	10-15	22
EF 20-35mm f/3.5-4.5 USM	Ultrasonic	94°-63°	11-12	22-27
EF 24-85mm f/3.5-4.5 USM	Ultrasonic	84°-28° 30'	12-15	22-32
EF 28-70mm f/2.8L USM	Ultrasonic	75°-34°	11-16	22
EF 28-80mm f/3.5-5.6IV USM	Ultrasonic	75°-30°	10-10	22-38
EF 28-80mm f/3.5-5.6	MM	75°-30°	10-10	22-38
EF 28-105mm f/3.5-4.5 USM	Ultrasonic	75°-23° 20'	12-15	22-29
EF 35-80mm f/4-5.6 USM	Ultrasonic	63°-30°	8-8	22-32
EF 35-80mm f/4-5.6III	Belt Drive	63°-30°	8-8	22-32
EF 35-350mm f/3.5-5.6L USM	Ultrasonic	63°-3° 30'	15-21	22-32
EF 70-200mm f/2.8L USM	Ultrasonic	34°-12°	15-18	32
EF 75-300mm f/4-5.6IS USM	Ultrasonic	32° 11'-8° 15'	10-15	32-45
EF 75-300mm f/4-5.6II USM	Ultrasonic	32° 11'-8° 15'	9-13	32-45
EF 75-300mm f/4-5.6I	MM	32° 11'-8° 15'	9-13	32-45
EF 80-200mm f/4.5-5.6II	Belt Drive	30°-12°	9-10	22-27
EF 100-300mm f/4.5-5.6 USM	Ultrasonic	24°-8° 15'	10-13	32
EF 100-300mm f/5.6L	AFD	24°-8° 15'	10-15	32

Closest Focusing Distance		Filter Size	Lens Hood	Length		Weight	
(ft.)	(m)	(mm)		(in.)	(mm)	(oz.)	(g)
0.7	0.2	Gelatin	Built-in	2-7/16	62.2	11.6	330
0.8	0.25	Gelatin	Built-in	3-1/2	89.0	19.8	560
0.8	0.25	72mm	EW-75	3-1/16	77.5	14.2	405
0.8	0.25	58mm	EW-60	1-7/8	48.5	9.5	270
0.8	0.25	58mm	EW-63	2-3/16	55.6	10.9	310
1.0	0.3	52mm	EW-65	1-11/16	42.5	6.5	185
0.8	0.25	52mm	EW-65	1-11/16	42.5	7.4	210
2.0	0.6	72mm	ES-79	3-3/16	81.5	2.2 lb.	985
1.5	0.45	58mm	ES-71	2-15/16	73.8	10.1	290
1.5	0.45	52mm	ES-62#	1-5/8	41.0	4.6	130
3.1	0.95	72mm	ES-79	3-5/16	84.0	2.3 lb.	1,025
2.8	0.85	58mm	ET-65II	2-15/16	75.0	14.9	425
2.9	0.9	58mm	ET-65II	2-7/8	73.5	16.1	460
2.95	0.9	72mm	ET-78	4-7/16	112	26.3	750
4.3	1.3	52mm	ET-62II#	3-7/8	98.4	13.8	390
8.2	2.5	48mm DI	ET-123	8-3/16	208	6.6 lb.	3,000
4.92	1.5	72mm	ET-78	5-3/8	136.2	26.8	765
9.8	3.0	48mm DI	ET-118II	9-9/16	253	6.3 lb.	2,855
4.92	1.5	77mm	Built-in	8-11/16	221	42.3	1,200
8.2	2.5	77mm	Built-in	8-3/8	213.5	2.9 lb.	1,300
13.2	4.0	48mm	ET-161BII	13-11/16	348	206.9	5,910
11.5	3.5	77mm	Built-in	10-1/16	256	2.7 lb.	1,250
16.4	5.0	48mm DI	ET-123BII	15-3/8	390	6.6 lb.	3,000
19.7	6.0	48mm DI	ET-161II	18	456	13.2 lb.	6,000
46.0	14.0	48mm DI	Built-in	33	836	36.3 lb.	16,500
0.75	0.23	52mm	None	2-1/2	63	9.9	280
1.0	0.3	52mm	None	4-1/8	105.5	1.4 lb.	650
1.57	0.48	72mm	ET-78	7-3/8	186.6	38.2	1090
1.0	0.3	72mm	EW-75B	3-7/16	87	1.2 lb.	570
1.4	0.4	72mm	EW-79B	3-9/16	90	1.4 lb.	645
1.6	0.5	58mm	ES-65II	3-7/16	88	1.2 lb.	565
-	-	-	-	1-1/16	27.3	7.1	200
-	-	-	-	2	50.5	8.5	240
-	-	-	-	1-3/8	34.9	5.6	160
1.38	0.42	77mm	EW-83C	3-3/4	95.7	19.1	545
1.1	0.34	77mm	EW-83	3-1/4	83	11.9	340
1.75	0.5	67mm	EW-73	2-7/8	69.5	13.3	380
1.6	0.5	77mm	EW-83B	4-5/8	117.6	1.9 lb.	880
1.25	0.38	58mm	EW-60C	2-13/16	71.2	7.1	200
1.25	0.38	58mm	EW-60C	2-13/16	71.2	7.1	200
1.6	0.5	58mm	EW-63	2-13/16	72	13.1	375
1.3	0.38	52mm	EW-54II	2-3/8	61	6.0	170
1.4	0.4	52mm	EW-54II	2	63.5	6.1	175
2.0	0.6	72mm	EW-78	6-9/16	167	3.0 lb.	1,385
4.9	1.5	77mm	ET-83	7-5/8	193.6	2.7 lb.	1,275
4.9	1.5	58mm	ET-64	5-7/16	137.2	1.5 lb.	670
4.9	1.5	58mm	ET-60	4-13/16	122.1	17.3	495
4.9	1.5	58mm	ET-60	4-13/16	122.1	16.8	480
4.9	1.5	52mm	ET-54	3-1/8	78.5	8.8	250
4.9	1.5	58mm	ET-65II	4-3/4	121	1.2 lb.	540
4.6	1.4	58mm	ET-62II	6-9/16	167	1.5 lb.	695

For best results with your Canon EOS camera use original Canon EF lenses.

As an owner of a Canon EOS camera, you will achieve the best results in your photography using Canon's own EF lenses. Each EOS camera body and each EF lens has its own built-in microcomputer. These microcomputers store a range of special data to ensure the smooth operation of such functions as AF, exposure control, etc. In addition, there are electronic mounts linking EOS bodies and EF lenses which support two-way digital communications between each part to allow exchange of information. Since the EOS System's market launch in 1987, new functions have been added on a continuing basis. These improvements include speeding up the AF function, increasing the number of focusing points, and the addition of the Eye Controlled Focus™ Function. As the system's range of functions has evolved, the nature of the basic system of communications between lens and body has evolved as well, ensuring that complete compatibility is maintained. This process of evolution will continue in the future with the addition of more new specifications, resulting in still further gains in reliability.

Accordingly, in order to realize the maximum performance of the EOS system and thereby achieve the highest possible photographic quality, we recommend that you use Canon EF lenses and Canon brand name accessories, since they are designed and manufactured to match the special qualities of your EOS camera.

USM = Ultrasonic Motor; AFD = Arc Form Drive; MM = Micro Motor; DI = Drop-in Filter; L = L-Series Professional Lens; # = With Hood Adapter 62

* TS-E Lenses are manual focus with automatic diaphragm.

** Extenders EF 1.4x & EF 2x are for exclusive use with EF 70-200mm f/2.8L, EF 200mm f/1.8L, 200mm f/2.8L, 300mm f/2.8L, 300mm f/4L, 400mm f/2.8L, 400mm f/5.6L, 500mm f/4.5L, 600mm f/4L and 1200mm f/5.6L. (Manual Focus only when Extender EF 1.4x is used with EF 400mm f/5.6L, 1200 mm f/5.6L, or 500mm f/4.5L, or when Extender EF 2x is used with EF 300mm f/4L, 400mm f/5.6L, 500mm f/4.5L, 600mm f/4L and 1200mm f/5.6L.)

*** Life Size Converter EF is for exclusive use with EF 50mm f/2.5 Compact Macro.

▼ Special order item

Subject to change without notice.

Canon EOS ELAN II Creative Accessories

The sophistication of the EOS ELAN II design is matched by sophisticated accessories designed to complement the camera and enhance its impressive capabilities. ELAN II is the foundation for an entire system of photography, integrated by distinctive design, computer interface, and intuitive operation.



Speedlite 380EX

Designed specifically for the EOS ELAN II and II ϵ *, the Speedlite 380EX is programmed into the AIM system, integrating Flash AE and autofocus information for better results. Advanced E-TTL exposure control compares flash output (via pre-flash) to ambient light and balances both for a more natural effect. FP mode allows synchronization at speeds of up to 1/4000th second. FE lock allows for more precise creative control, freezing flash exposure information for up to 16 seconds prior to shutter release. Advanced capabilities include a 90° bounce, auto-zoom head that changes coverage angles from 24mm to 105mm lenses, and flash confirmation indication.

* Speedlite 380EX is fully compatible with all EOS cameras for TTL automatic operation.



Battery Pack BP-50

A handsome addition to the EOS ELAN II, the Battery Pack BP-50 provides a second shutter release button ideally positioned for extended vertical shooting and an "ON-OFF" switch for power conservation. The BP-50 powers the ELAN II and II ϵ with four AA-sized alkaline or NiCd batteries, and can also accept a 6V 2CR5 lithium battery.

High-Capacity External Battery Pack BP-5B (Requires BP-50)

Runs on common D-cell alkaline or NiCd batteries, providing vital power in extremely cold operating conditions and/or when operating in wilderness where there is no time or opportunity to purchase new batteries.



Wired or Wireless Remote Control

When you want some distance between you and the camera position, the Remote Controller RC-1 enable wireless operation and can activate the self-timer/mirror lock-up functions. The wired Remote Switch RS-60E3 serves as an electronic cable release, allowing the shutter to be released without "camera shake."



Remote Switch RS-60E3



Remote Controller RC-1

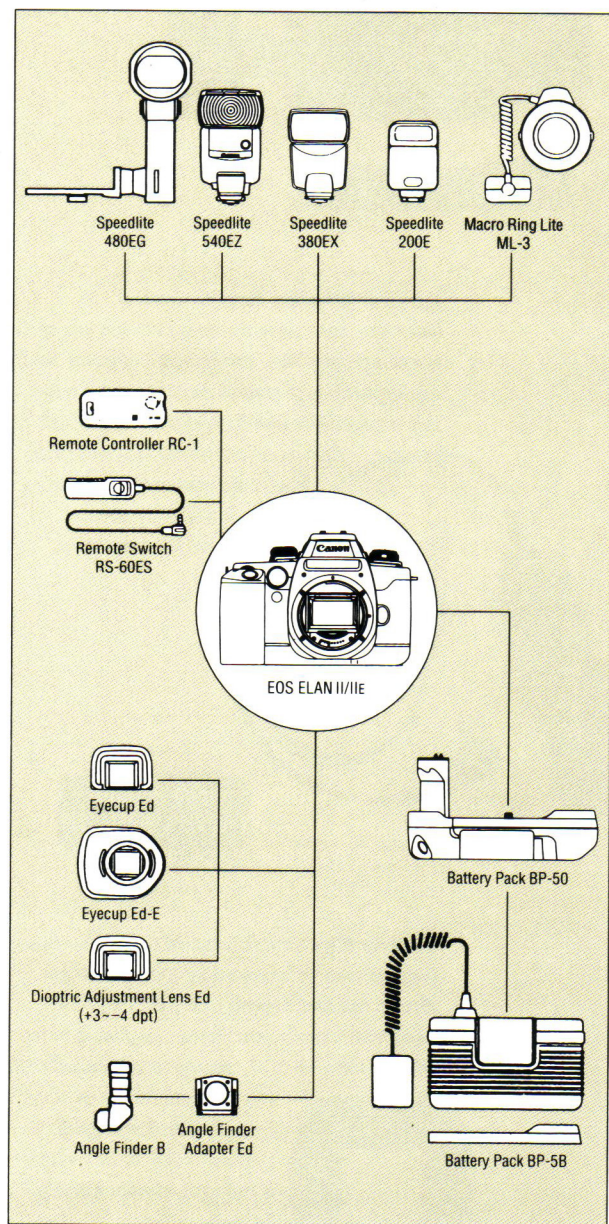
Dioptic Adjustment Lens Ed (with rubber frame)

Eyeglass wearers often prefer to remove their glasses and look directly into the camera's viewfinder. The Ed series lenses, available in ten settings from +3 to -4, may be interchanged with the standard EOS ELAN II and II ϵ eyepiece. The ELAN II ϵ 's Eye Controlled Focus™ system is fully operational with the Ed series lenses.



ELAN II – Gateway to the EOS System

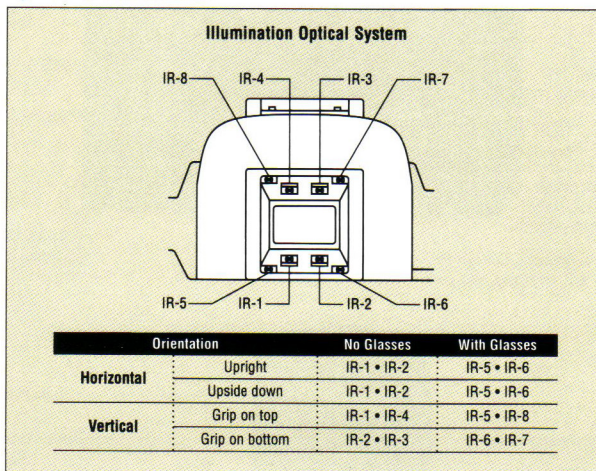
The incredible versatility of the EOS ELAN II and II ϵ cameras is multiplied many times over by the addition of genuine Canon EF lenses and accessories that comprise the EOS system. From optional high-powered Canon Speedlites to battery packs for sub-zero shooting to a series of dioptic lenses that let you shoot without wearing your eyeglasses, your ELAN II camera opens the door to creative photography.



Advanced Technologies

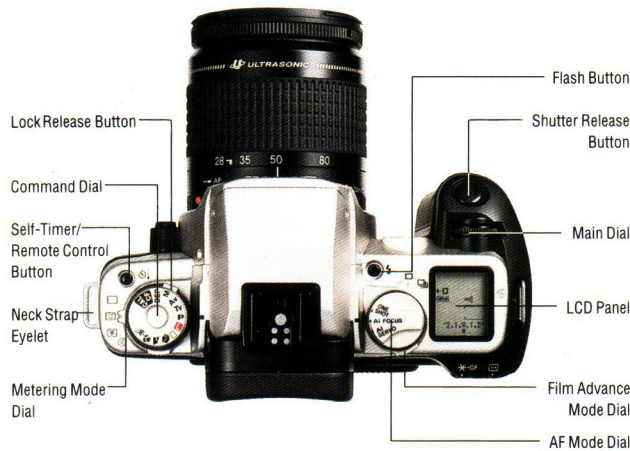
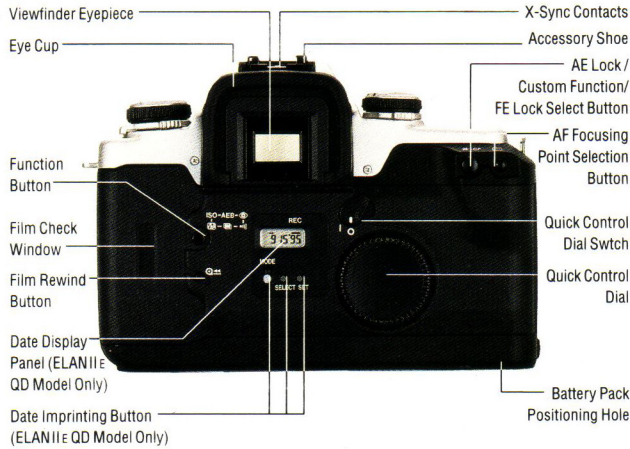
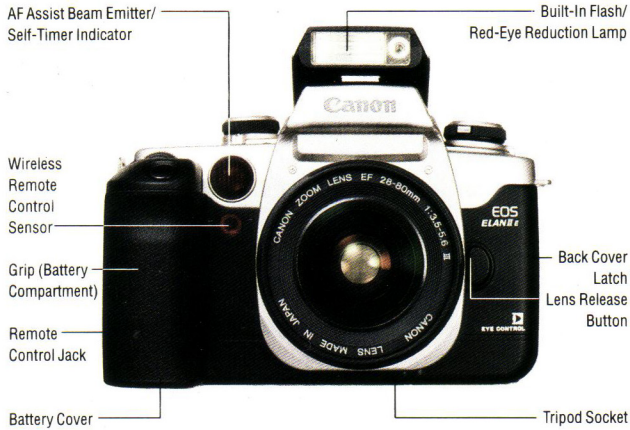
As a creative tool, the EOS ELAN II is greater than the sum of its parts. While each aspect of the camera features advanced Canon technology, these technologies interface synergistically for superior results. Look through the viewfinder of the ELAN II ϵ and the advanced, Eye Controlled Focus™ system knows what you're looking at, and sharpness is assured. Even if your subject is off-center, the AIM system now meters the light in that area for optimum brightness and color balance. Indoors, or outdoors with fill flash, the E-TTL system adds advanced flash exposure control to enhance the end result. From Auto DX film speed setting to communication with the entire line of Canon EF lenses, for focal length and aperture information, ELAN II analyzes all data and fully utilizes all of its advanced features for professional image quality. Touch the release button and the combined force of all these Canon technologies is unleashed, as the Whisper Drive™ silent transport advances your film at up to 2.5 frames per second.

Eye Controlled Focus™

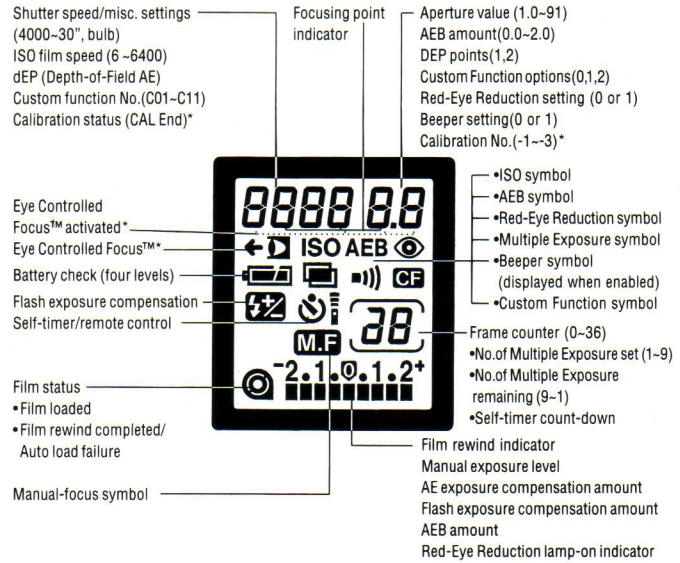


EOS ELAN II ϵ features advanced Eye Controlled Focus™, with exclusive Canon multi-BASIS technology, utilizing a cross-type sensor at the center as well as vertical line sensors. Three focusing points, left-center-right or above-center-below when the camera is held vertically, provide a wide focusing area and rapid response. Position sensors near the viewfinder and interpretive software switch from horizontal to vertical AF modes automatically, and maintain above/below orientation regardless of which end of the camera is actually "up." Both the ELAN II and II ϵ models also provide for manual selection of the focusing point or auto selection.

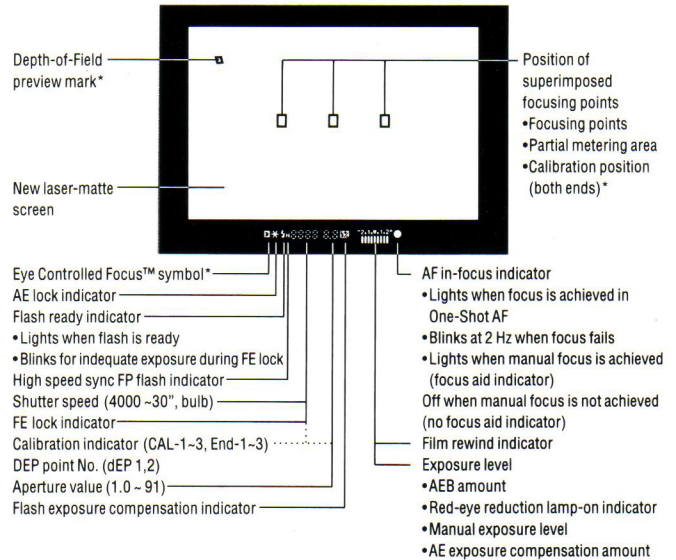
Nomenclature



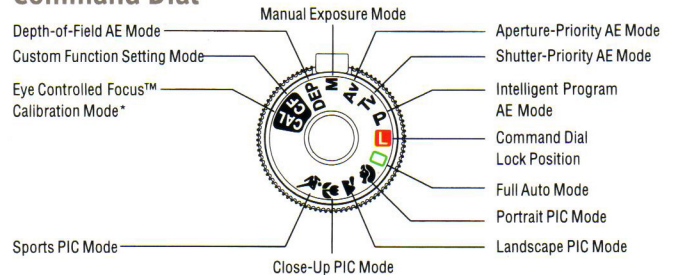
LCD Panel Information



Viewfinder Information Display



Command Dial



Specifications

TYPE AND MAJOR COMPONENTS

Type: 35mm vertical-travel focal plane shutter SLR (Single-Lens Reflex) camera with multi-point autofocus (Eye Controlled Focus™ in ELAN II ϵ model), auto exposure with built-in flash, and power winder.

Lens Mount: Canon EF Mount (fully electronic signal transfer system).

Usable Lenses: Canon EF Lenses.

Viewfinder, ELAN II: Fixed eye-level pentaprism with approximately 90% vertical and 92% horizontal coverage of actual picture and 0.71x magnification at infinity with standard (-1) diopter. Features Liquid Crystal Display showing exposure information and L.E.D. readouts showing custom functions.

Viewfinder, ELAN II ϵ : Same as ELAN II plus Depth-of-Field preview mark. Center and two outside focusing points controlled by eye movement.

Focusing Screen: Laser-matte, non-interchangeable.

Dioptic Adjustment: Standard diopter of -1, may be interchanged with optional diopters from +3 to -4, enabling Eye Control Focus™ with or without glasses.

Mirror: Quick-return half mirror (60% reflection / 40% transmission)

Eyepoint: 19mm

Shutter: Vertical-travel focal plane shutter; all speeds electronically controlled. Multiple exposure programmable to 9 different exposures. Ten-second delay Self-Timer.

Shutter Speeds: 1/4000 to 30 sec. (in 1/2 step increments) plus bulb.

Maximum X-sync speed: 1/125 sec. When used with Speedlite 380EX in High-Speed Sync (FP) mode up to 1/4000 second.

Viewfinder Information, Inside Image Area: Three autofocus frames (left/center/right in horizontal shooting mode; above/center/below in vertical mode), illuminated by a super-imposed display. Also eye-activated Depth-of-Field check mark. (ELAN II ϵ only)

Viewfinder Information, Below Image Area: (from left to right) Eye Controlled Focus™ indicator (ELAN II ϵ only); AE Lock symbol; flash ready signal; High-Speed Sync in use signal; shutter speed and aperture indicating LEDs (blinks at 2hz when setting is unsuitable), also present DEP 1 / DEP 2 information, Calibration (Cal 1 to 3, END -1 to 3); exposure compensation / flash exposure compensation indicator; Red-Eye Reduction lamp on / reduction progress indicator; in-focus indicator (blinks at 2hz when focus cannot be achieved).

AUTOFOCUS

AF Control System: TTL-CT-SIR (Secondary Image Registration) phase detection type using multi-BASIS (Base Stored Image Sensor).

Focus Point Selection: Selected automatically by camera or manually by user. Focus point selection via Eye Controlled Focus™ available in ELAN II ϵ only.

Focus Modes: (1) One-shot AF (2) AI Focus (3) AI Servo (4) Manual (5) Eye Control (ELAN II ϵ only) for both vertical and horizontal operation.

Focus Operation: Activated by (1) Partially depressing shutter-release button (2) Pressing AE Lock Button (3) Eye Control (ELAN II ϵ only).

AF Focus Indicator: Blinking LED indicator light in viewfinder.

AF Working Range: EV 0-18.

AF-assist beam: Automatically emitted when necessary and aimed at the area covered by the active focus point.

EXPOSURE CONTROL

Light Metering: TTL full-aperture metering using a 6-zone evaluative metering silicon photocell. Four metering modes available: (1) 6-zone evaluative metering

(2) 9.5% partial metering linkable to the focus point by Custom Function control

(3) Center-weighted average metering (4) 3-point TTL off-the-film flash metering (6-zone metering using Speedlite 380EX).

Metering Range: 1-20 in all modes (ISO 100).

Flash Metering: 3-zone TTL Flash metering linked to focus point.

Exposure Modes: (1) Intelligent Program AE with variable shift (2) Fully Automatic

(3) Shutter-Priority AE (4) Aperture-Priority AE (5) Depth-of-Field AE (6) Portrait

(7) Landscape Mode (8) Close-up Mode (9) Sports Mode (10) Manual Mode.

Exposure Compensation: (1) Auto Exposure Bracketing (AEB) ± 2 in 1/2 stops, repeatable. May be used in Intelligent Program, Shutter-Priority, Aperture-Priority, Depth-of-Field, and Manual modes only.

Multiple Exposure: Up to 9 exposures can be preset. Automatically clears upon completion.

FILM TRANSPORT

Film Speed Setting: ISO 25-5000 automatically set in 1/3 step increments according to DX code. Can also be set manually from ISO 6-6400 in 1/3 step increments.

Film Loading: Automatic take-up with a sprocketless system. Film is automatically advanced to the first frame when the camera back is closed.

Film Transport: Choice of single frame or continuous shooting at approximately 2.5 fps with film counter revealing frame number.

Film Rewind: Film is automatically rewound at the end of the roll or after 36 exposures with a mid-roll film rewind option. Choice of high-speed (6 seconds with 24 exposure roll) or silent rewind (12 seconds with 24 exposure roll) modes.

Film Transport Confirmation: By up/down counting of frame counter in LCD panel.

BUILT-IN FLASH

Type: Built-in, retractable TTL automatic flash; pops-up automatically when needed in low light / backlight situations except when in Creative shooting mode; may be activated in Creative mode with flash pop-up switch.

Flash AE Controls: TTL automatic flash control by metering light reflected off film plane. In Programmed AE modes, flash aperture is set according to TTL program. In Aperture-Priority AE and Manual modes, user sets flash AE aperture. In Shutter-Priority AE, aperture is set to match shutter speed selected. (1/125 sec. or slower)

Coverage Angle: Flash covers 28mm lenses.

Guide Number (ISO 100, ft.): 43.

Coupling Range (ISO 100): 1m/3.3 ft. to 4.6m/15.1 ft.

Flash Duration: 1.0ms or less.

Recycling Time: Approximately two seconds.

Color Temperature: Equivalent to daylight.

POWER SOURCE

Battery: One 6V lithium battery (2CR5), housed inside the grip.

Battery Check: Automatic when Command Dial is released from "L" position. Condition indicated by a 4-step display on the LCD panel.

Shooting Capacity (24 exp. rolls): EOS ELAN II ϵ (with Eye Controlled Focus™ ON/OFF).

Temperature	AE100%, FA0%	AE50%, AF50%	AE0%, AF100%
Normal Temperature (68°F/20°C)	90/110	35/40	18/20
Low Temperature (4°F/-20°C)	45/50	14/15	6/7

Optional Battery Pack BP-50: Uses four "AA" alkaline batteries, one 2CR5, or one NiCd battery for greater shooting capacity, when in the wilderness, or in cold temperatures.

Optional High Capacity Battery Pack BP-5B: (requires BP-50) adds heavy-duty capacity of four "D" cell or NiCd batteries for shooting in cold temperature extremes.

OTHER

Custom Functions: Eleven available.

Eyepiece Shutter: Built-in.

Remote Control: Built-in remote control for use with optional remote control accessories.

Data Display: In viewfinder and LCD panel.

Camera Back: Non-interchangeable ELAN II ϵ QD available with Quartz Date back.

Cosmetics: Exterior aluminum components combined with high-impact plastics.

Self-Timer: When selected, ten-second delay from shutter release to actual exposure, indicated w/ count-down on LCD display and flashing red LED on camera front.

External Flash: Speedlite 380EX is recommended with this camera to employ new E-TTL flash exposure system as well as High-Speed Sync to 1/4000 sec. & FE Lock. The camera is fully compatible with other Canon Speedlites designed for EOS system cameras.

DIMENSIONS

Size: 152.5mm (W) x 104.5mm (H) 71mm (D)
6-1/16" (W) x 4-1/8" (H) x 2-3/4" (D).

Weight: EOS ELAN II: 20.5oz./580g
EOS ELAN II ϵ : 20.7oz./585g
(with battery: 2CR5 add 1.4oz./40g)

Capture the Moment, Record the Date

The Canon ELAN II ϵ QD is identical to the ELAN II ϵ but comes equipped with a Quartz Date back that allows you to print the date (Day, Month, Year/ Month, Day, Year / Year, Month, Day) or the exact time in Hours and Minutes directly on the photo.