

WILSONWERKS ARCHIVES

This camera manual is for reference and historical purposes, all rights reserved.

This cover page is copyrighted material. This document may not be sold or distributed without the express consent of the publisher.

©2008-2012 wilsonwerks Llc

GRADUATE TO CREATIVE PHOTOGRAPHY
**THE EXCITING COKIN
GRADUATED FILTERS**



COKIN

CREATIVE FILTER SYSTEM
Marketed by Minolta Corporation

THE COMPLETE COKIN CREATIVE FILTER SYSTEM GIVES YOU MORE!

If you can snap a picture, you can create magical photographs. The Cokin Creative Filter System is not only simple to use, it adapts to virtually any 35mm SLR, movie and video cameras. Here are some questions and answers to help you better understand filters and the Cokin Creative Filter System.

What Can Filters Do?

Filters are placed in front of your lens to produce special effects, or to control light. They let you create subtle changes or spectacular effects by giving you control over the color, quality, even the mood of your photographs. For example, with filters you can:

- increase or decrease contrast
- add or enhance color
- highlight or diffuse a subject
- eliminate reflections or create reflections
- give the feeling of warmth or age
- change the mood or the weather
- create multiple images or many other special effects

What's a Modular Filter System?

The Cokin modular system is designed around a unique filter holder that attaches, with a simple adapter ring, to almost any lens. The filter holder can be attached to different lenses by simply changing the adapter ring. Once the filter holder is in place on your lens you just slip on the filters of your choice and shoot.

How Does the Cokin Filter System Work?

The Cokin Creative Filter System is easy to use. The basic elements include

an adapter ring which attaches to your lens, a filter holder and the Cokin filters.

The Cokin filter holder can hold up to three different filters at one time and can be adjusted laterally as well as axially to give the photographer total creative control. With Cokin, taking great pictures is just a matter of choosing your filters from the wide selection available.

Which Cameras and Lenses Will the Cokin System Fit?

The Cokin Filter System is compatible with virtually every 35mm SLR camera made and is available in two sizes: "A" Series and "P" Series. The "A" Series Filter System fits almost all 35mm SLR camera lenses with filter diameters from 36 to 62mm, and Hasselblad.[®] The "P" Series Filter System is specifically designed for larger format cameras and lenses as well as movie and video cameras. This series fits lenses with filter thread diameters from 48mm to 82mm and Hasselblad.[®]

Where Can I Find Out More About the System?

Cokin is widely available in photo outlets across the country. Visit your local camera dealer for a complete demonstration. Your photo dealer also has the new Cokin 106-page brochure. It is the most complete guide to creative filter photography ever published. Find out how easy and affordable it is to get started with Cokin Filters. If you need assistance in locating the Cokin dealers nearest you, write to:

Cokin Filters, 101 Williams Drive
Ramsey, N.J. 07446



COKIN GRADUATED FILTER SERIES

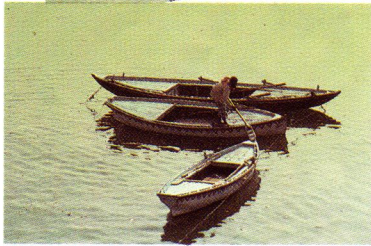
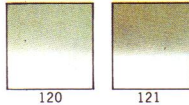
You too can create spectacular creative effects like these with the 14 different and exciting Cokin Graduated Filters.

Best of all, these graduated filters are only a small part of the total Cokin Creative Filter System which numbers over 200 strong!

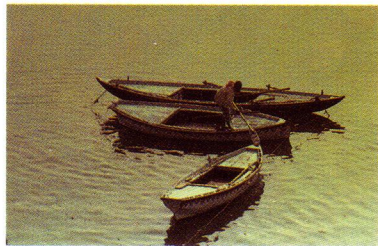
NO FILTER



GRADUATED GREY

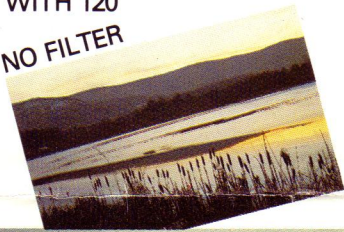


WITH 120

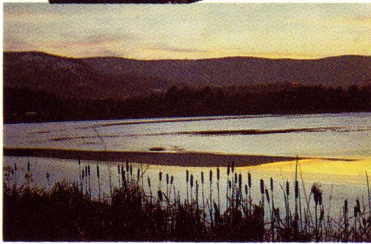
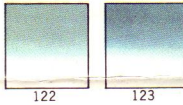


WITH 121

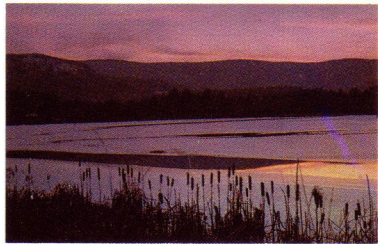
NO FILTER



GRADUATED BLUE



WITH 122

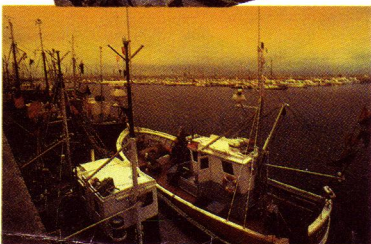
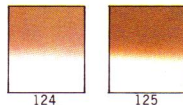


WITH 123

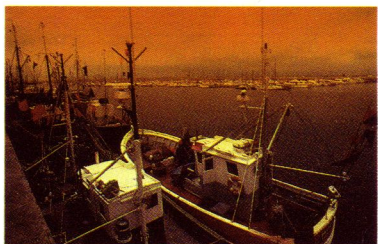
NO FILTER



GRADUATED TOBACCO

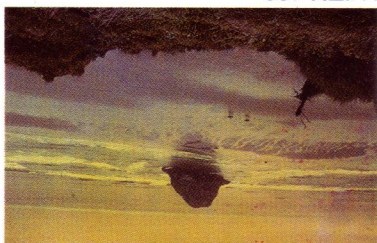


WITH 124



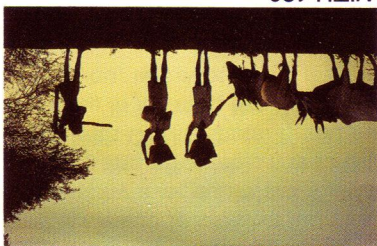
WITH 125

WITH 132



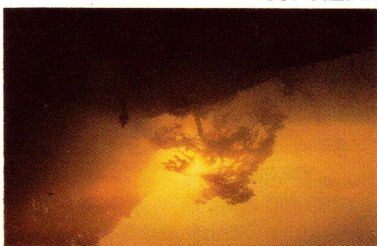
NO FILTER

WITH 130



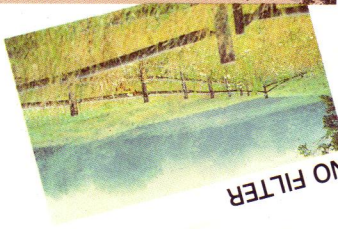
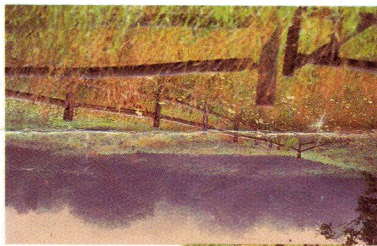
NO FILTER

WITH 128



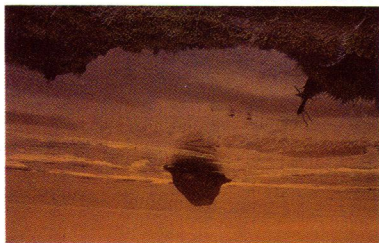
NO FILTER

WITH 126



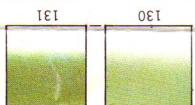
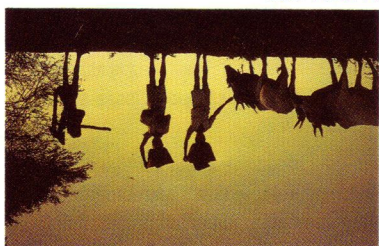
NO FILTER

WITH 133



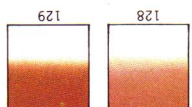
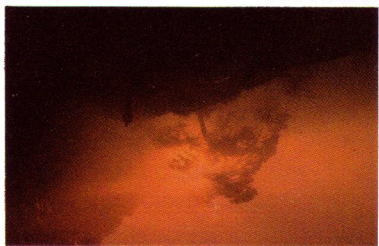
GRADUATED YELLOW

WITH 131



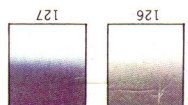
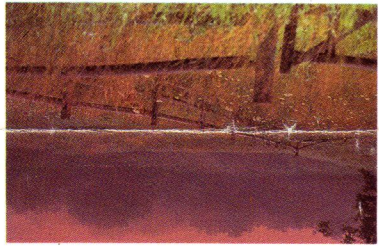
GRADUATED EMERALD

WITH 129



GRADUATED PINK

WITH 127



GRADUATED MAUVE