

WILSONWERKS ARCHIVES

This camera manual is for reference and historical purposes, all rights reserved.

This cover page is copyrighted material. This document may not be sold or distributed without the express consent of the publisher.

©2008 wilsonwerks Llc



**Introducing the
LEICA CL - A new
way to invest in
dynamic
photography**

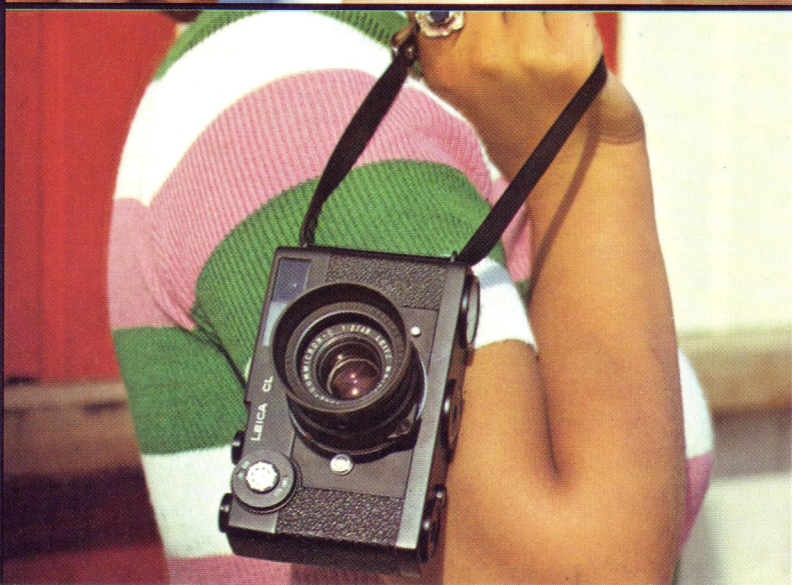
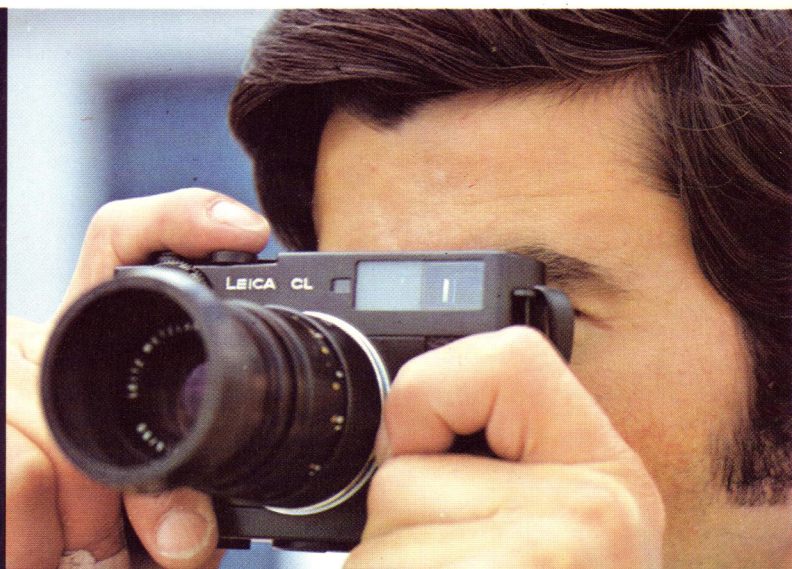
LEICA[®] CL

**The smallest rangefinder camera featuring
a LEICA bayonet lens mount and selective
through - the - lens exposure metering**



LEICA CL

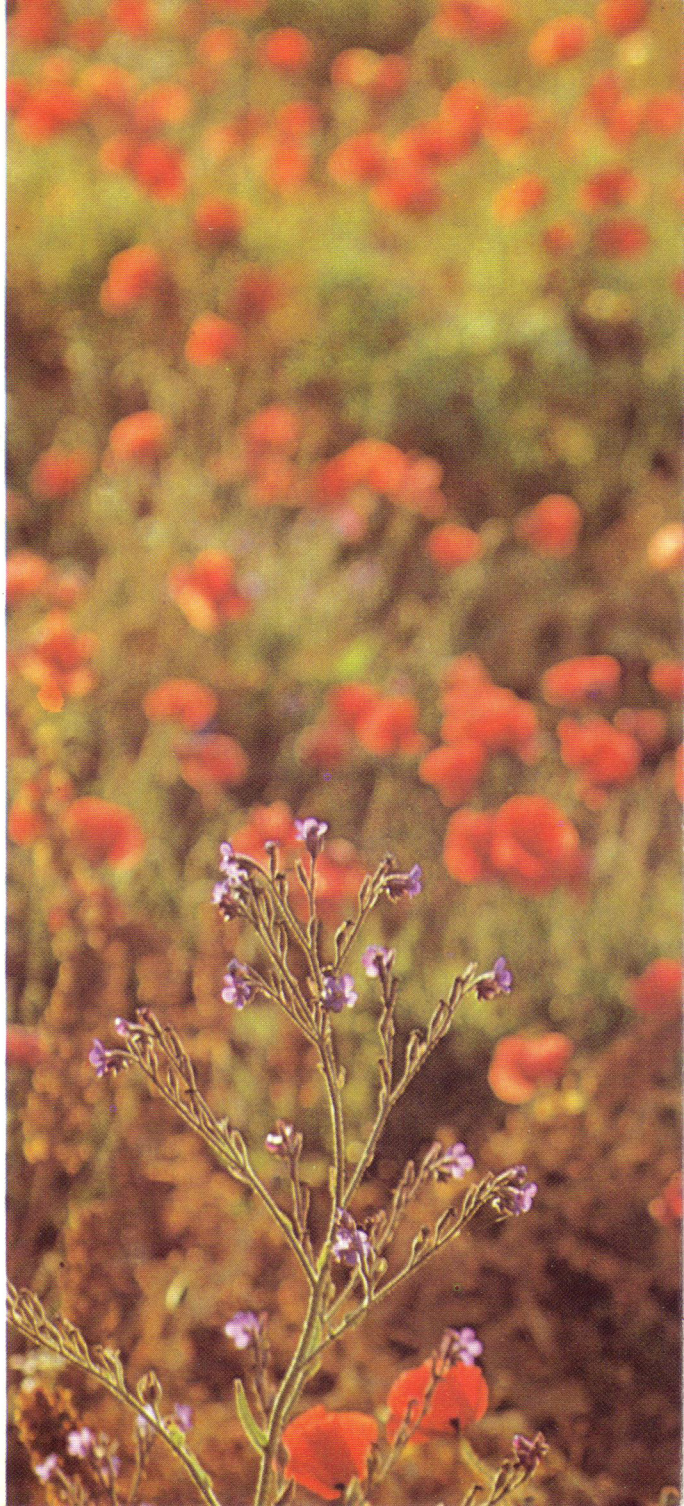
For all
who look for maximum
photographic quality at minimum cost



LEICA CL

The truly
compact LEICA

Back-lit charm depends on expert exposure measurement. With the LEICA CL you, too, can cope with difficult light conditions.





LEICA

The LEICA Tradition

The LEICA was the first modern miniature camera. It revolutionised photographic style. World-wide, LEICA became a legendary name to countless photo enthusiasts. What made LEICA great in 1924 makes it great today. Unparalleled photographic precision, reliability, easy handling, versatility and speed all combine to set the famous

LEICA standard envied throughout the world.

And that is why news photographers all over the world, parents keeping pictorial track of growing children, as well as amateurs and professionals, traditionally have chosen LEICA. LEICA makes photography always fascinating, constantly thrilling and rewarding.

LEICA CL

compact LEICA precision

The new small LEICA is compact and handy – the lightest LEICA ever. That's why it's the ideal constant companion. Straightforward and easy to use, it has a proven coupled rangefinder. At a glance through the finder you instantly view the subject and all exposure data. Its selective through-the-lens exposure metering copes with any subject, any brightness distribution. And it has a precision focal plane shutter and interchangeable lenses.

Last but not least it combines maximum optical and engineering precision in the smallest possible space. That is why the LEICA CL helps you shoot fast to capture those fleeting photographic moments in sharp, clear pictures---the LEICA way.

**LEICA CL – for all
who insist on better pictures**

LEICA CL Creative subject control with interchangeable lenses

A fixed lens imposes limitations – interchangeable lenses overcome them. That is why the LEICA CL offers the proven LEICA bayonet lens system. With two specially developed lenses – a 40mm SUMMICRON-C f/2 and a 90mm ELMAR-C f/4-the new CL ideally meets all needs of creative picture control with minimum effort. More than

The 40mm lens

The new 40mm SUMMICRON-C with its increased angle of view and high speed is the perfect lens for snapshots, short-range feature photography, architecture, interiors, or close-quarter shooting. The great depth of field of this lens gives you enormous action shooting latitude: moving subjects remain within your field of view and sharpness zone. Further, this lens covers broad landscapes and wide views with maximum detail right into the image corners.

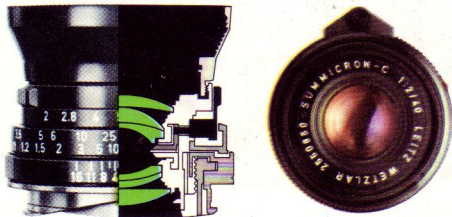
90% of all pictures are taken with medium-focus lenses. Hence the 40mm and 90mm lenses offer the most useful practical focal length combination. Both lenses are coupled with the LEICA CL view- and rangefinder. On fitting either lens the appropriate brightline frame automatically appears in the finder.

The 90mm lens

In contrast to the 40mm lens, the 90mm ELMAR-C concentrates on details that matter. The longer focal length gives more than twice the image size of the 40mm lens. It fills the frame to isolate the subject, leaving out irrelevant surroundings. That makes the 90mm ideal for portraiture, children and animals as well as flowers and still life subjects. This lens will equally thrill you for distant views, architecture and landscape photography, and for feature and sport shots.

40mm SUMMICRON-C f/2

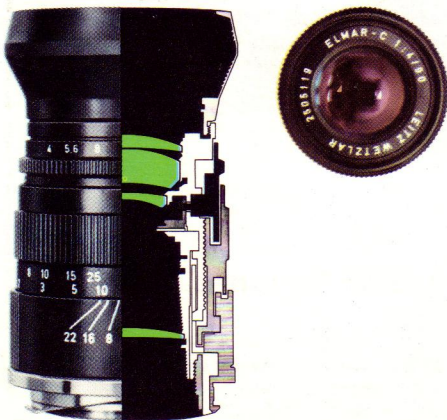
High-speed 6-element standard lens, extremely compact, wide 57° angle of view. Helical focusing from ∞ to 32" (0.8m). Smallest subject field 17" x 25½" (435x650mm). Iris diaphragm with click-stops at half-stop intervals from f/2 to f/16. Combined feet/meter distance and depth-of-field scales. Overall length less than 1" (23.5mm). Weight less than ¼ ozs. (120g). Screw-in lens hood, folds back on lens. Filter Size: Series 5.5.



40 mm

90mm ELMAR-C f/4

Extremely handy portrait and tele lens, 4 elements, angle of view 27°. Helical focusing from ∞ to 40" (1m). Smallest subject field 8½" x 12¾" (220x330mm). Iris diaphragm with click-stops at half-stop intervals from f/4 to f/22. Combined feet/meter distance and depth-of-field scales. Overall length 2½" (61mm). Weight 8¾ ozs. (250g). Screw-in lens hood, folds back on lens. Filter Size: Series 5.5.



90 mm

LEICA CL Features and technology of a modern camera

The new LEICA CL is the last word in styling and functional technology. World-famous LEITZ engineering, based on intensive research and development and nearly half a century of LEICA experience in precision optics and mechanics, unparalleled know-how in the design of high-quality optical instruments – all these factors guarantee top photographic performance and quality in this up-to-date compact LEICA.

The reliability of LEITZ products is world famous. It stems from a tradition of meticulous attention to every detail, stringent testing, expensive special materials, constant production monitoring and final quality control by expert LEITZ engineers.

All this makes the LEICA CL unique for optical and engineering precision. And wherever you go – the LEICA name is backed by the LEITZ international guarantee with world-wide servicing.

1. The precision bright-line view- and rangefinder.

The bright-line view- and rangefinder with automatic parallax compensation shows full view when wearing spectacles. The CL features at-a-glance control settings: brilliant image frames for the 40, 50 and 90mm lenses, central rangefinder field for focusing, selected shutter speed, meter needle and zero index, battery test signal. It has a finder image scale 0.6 x and a 31.5mm rangefinder base length.

2. Up-to-date exposure metering

Selective through-the-lens measurement with free choice of aperture/speed combination. Meter needle and zero index visible in the finder. CdS cell of 7.5mm diameter; covers approximately the rangefinder field with the 90mm lens. Measuring range: 16 EV steps from 0.5 to 32,000 cd/sq.m with f/2 lens.

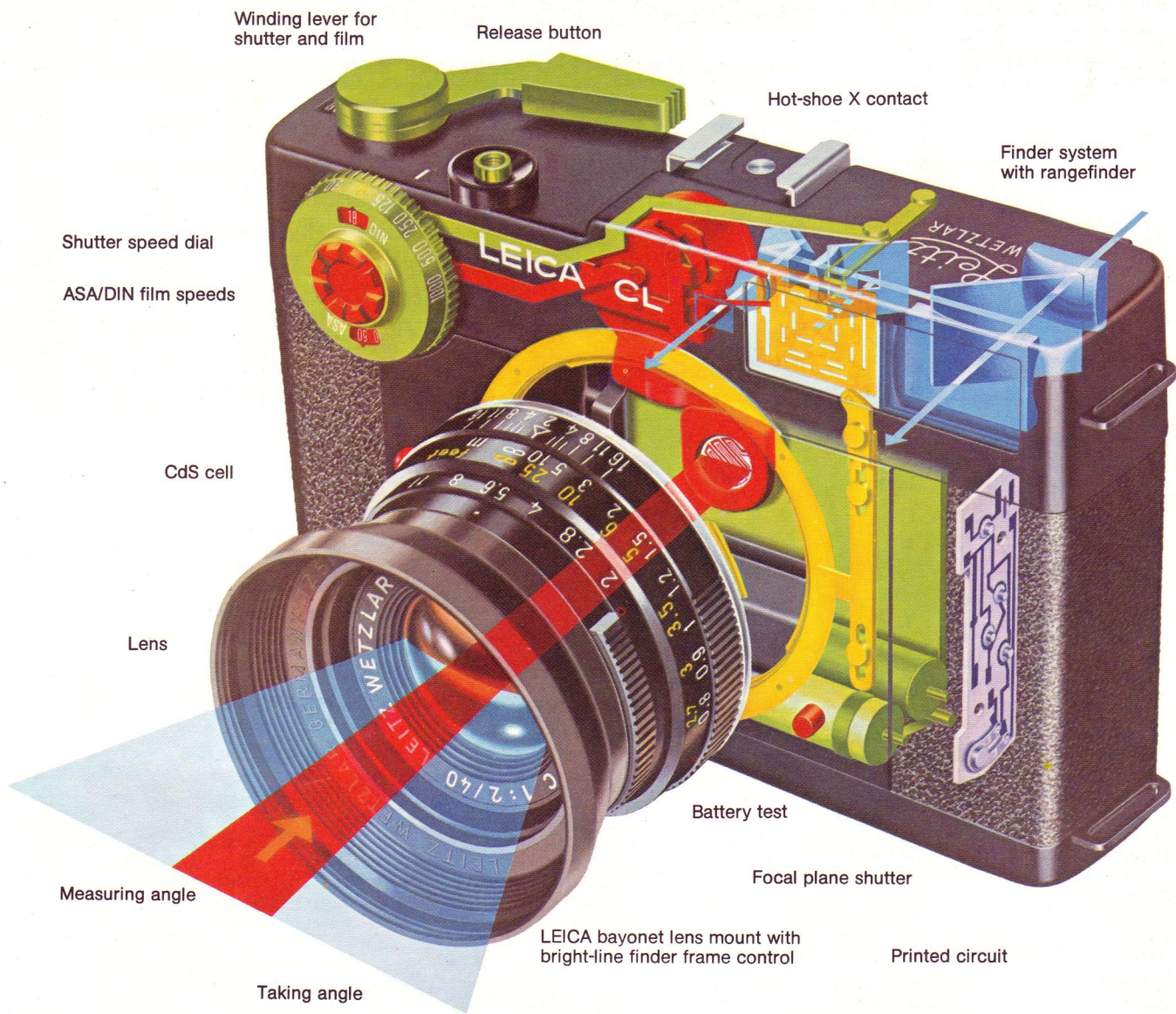
Film speed settings: Adjustable from ASA 25 to 1600 (15 to 33 DIN). Power source: Interchangeable MALLORY PX 625 button cell, 1.35 volts. Lasts about 2 years with average use.

3. The silent focal plane shutter

The newly designed focal plane shutter runs vertically down the film aperture, making for maximum camera compactness. An extremely soft and vibration-free release plus the smooth shutter movement insure shake-free exposures to make the most of the famous LEITZ lens performance. Shutter speeds from 1/1000 to 1/2 sec., intermediate settings usable except between $\frac{1}{30}$ – $\frac{1}{60}$. B setting for time exposures of any length. Automatic hot shoe flash synchronization up to 1/60 sec. with electronic flash and $\frac{1}{30}$ sec. with flash cubes.

4. The famous LEICA bayonet lens mount

The LEICA CL uses the LEICA M bayonet mount for life-long precision. This also allows the use of numerous other LEICA lenses as well as rapid and easy lens changing.



All-metal compact body. Tough leather-type textured plastic covering. Glare-free matte black anodized top cover, front panel and camera base. Camera back fully removable in one piece with base. 1/4 inch tripod bush. Film type indicator and rewind crank in base. Carrying strap eyelets at side. Rapid film loading system, takes

all standard commercial 35mm film cartridges with or without trimmed film leader. Accessory shoe with hot-shoe X contact.

Size: 4 $\frac{3}{4}$ " x 3" x 1 $\frac{1}{4}$ " (12 x 7.5 x 3.2 cm)

Weight: approx. 13 ozs. (365 g)

LEICA CL Optimum picture quality by precise focusing and exposure

To make the most of LEICA lens performance you must focus and expose exactly.

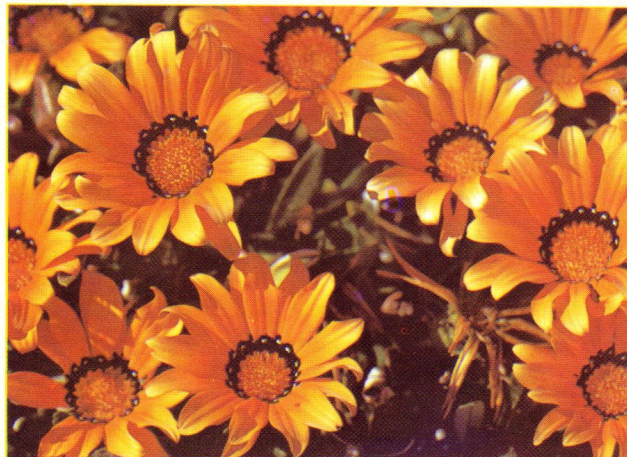
With the LEICA CL you do both instantly as you look through the finder. The precision focusing system of the LEICA CL is based on the time-proven combined double-image and split-image rangefinder.

Selective and precise exposure metering through the lens is the second outstanding LEICA CL feature. You read the correct exposure individually for every subject. You measure just the subject portion that matters and ignore misleading overbright or overdark portions. This selective metering approach permits precise "close-up" readings even at a distance.

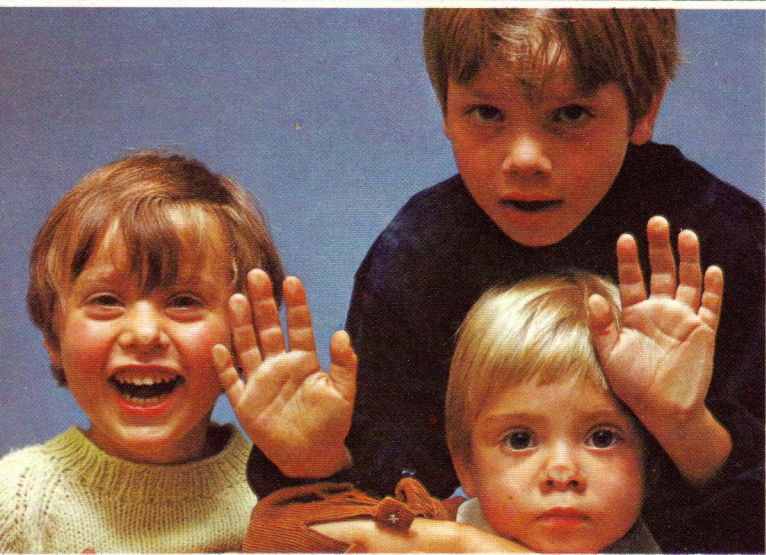
Bright background: No problem. Just measure the faces.



Dark background: No problem. Just measure one flower.







LEICA CL Fascinating scope within the full LEICA system

The small LEICA CL is a worthwhile acquisition even if you already own an M-series LEICA. This is because the CL takes numerous lenses of the LEICA M range, offering a highly useful second camera body.

Even old screw-based LEICA lenses can be fitted via the bayonet/screw adapter.

If you have an old LEICA, the new LEICA CL body brings your outfit up to date – and can utilize the selective through-the-lens exposure metering with your own LEICA lenses.

Further details in the special leaflet No. 120-50.



LEICA CL

The high-performance
compact outfit
for photographic
freedom

LEICA CL body with carrying strap
40mm SUMMICRON-C f/2 lens *
90mm ELMAR-C f/4 lens * in soft
leather case

Order No. 10 700

Order No. 11 542

Soft leather ever-ready case for the
camera with 40mm lens

Order No. 11 540

Order No. 14 542

Small LEICA CL combination case to take:
1 LEICA CL with 40 or 90mm lens and one
additional lens, filters and films.

Size: approx. 6¼" x 6½" x 3½"

(17x16x9cm)

Order No. 14 825

Order No. 14 197

Wrist strap

Eye-piece correction lenses:

-3, -2, -1, +0.5, +1, +1.5, +2, +3
diopters

Order No. 14 081

* Not intended for use on the LEICA M models.

LEICA, SUMMICRON, ELMAR, ELMARIT, SUMMARON,
SUMMILUX and NOCTILUX are registered trade marks.

Your photo dealer

Design specifications subject to change without notice.

ERNST LEITZ GMBH D-6330 WETZLAR, GERMANY

Subsidiary: Ernst Leitz (Canada) Ltd., Midland, Ontario

List **112-92/Engl.** Printed in W.Germany

VIII/73/FZ/g.

