

# WILSONWERKS ARCHIVES

This camera manual is for reference and historical purposes, all rights reserved.

This cover page is copyrighted material. This document may not be sold or distributed without the express consent of the publisher.

©2008 wilsonwerks Llc



Instructions

# MecablitZ 403

Strap

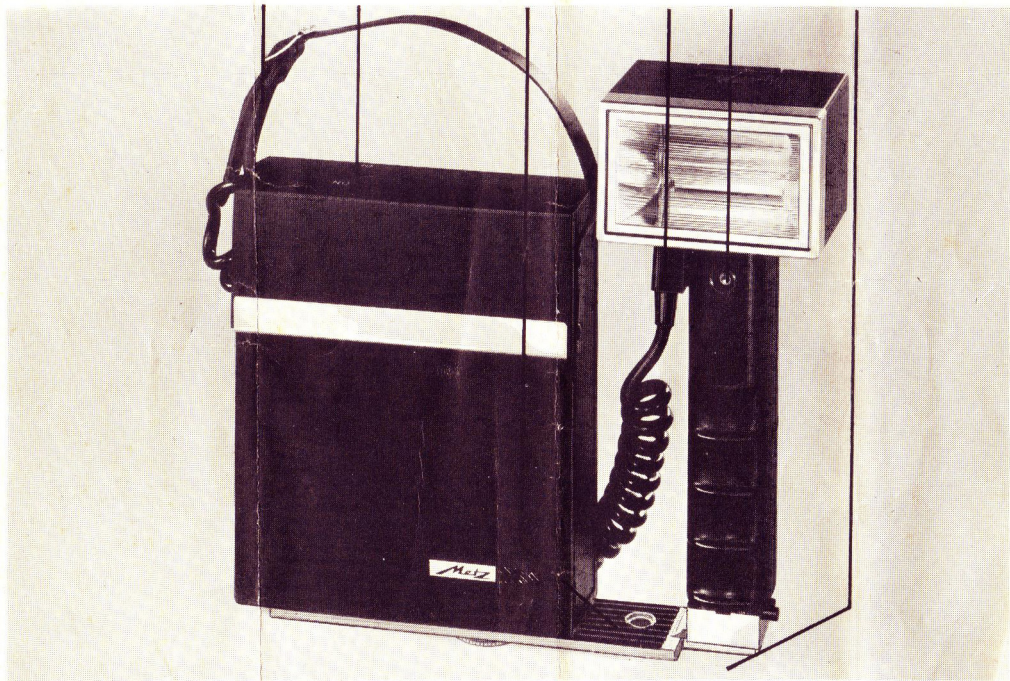
(1) On/off switch

Bracket

(3) Power cord

(4) Computer sensor

Grip screw



# OPERATING INSTRUCTIONS OF METZ MECABLITZ 403 WITH TELECOMPUTER

In order to ensure that full use is made of all the advantageous features offered by METZ MECABLITZ 403 WITH TELECOMPUTER, please read through the operating instructions before using this professional electronic flashgun for the first time.

**An epoch-making new technique is used in the Mecablitz 403 with "Telecomputer".** It contains an absolute novelty of an electronic light quantity measurement circuit (or Telecomputer) making possible flash recycling times of only about one second and a flash capacity of 1.000 flashes per battery.

The flash is suppressed in all computer controlled flashguns as soon as the film is exposed correctly. At greater distances from the subject the flash duration is longer — up to  $\frac{1}{250}$  sec. and at short distances it is only very short — down to  $\frac{1}{40\,000}$  sec.

With normally known telecomputers it is the quenchtube, which shorts out the flash tube and the flash condenser on order from the computer. This results in the suppression of all energy in all cases, even when only a fraction of the available capacity is required, as e. g. in cases of short distance photography.

In the Metz newly developed telecomputer of the Mecablitz 403 with a five thyristor circuit, **however, this rest-capacity remains in the flash condenser, when the flash is suppressed.** Consequently, only the amount of energy required for the actual flash is drawn from the accumulator. A thyristor is now used for stopping the flash at the exact moment of correct exposure.

## Assembling the Unit

Insert the plug at either end of the power cord into the 3-pin receptacle on the side of the grip handle. The other plug fits into the 3-pin receptacle on the power pack. Use the PC synch cord to make the connection between the socket at the side of the flash head and the PC terminal on your camera. Be sure to use the electronic flash (X) terminal. The camera bracket serves for attaching the grip handle to the camera tripod socket.

## On/off switch

To turn the unit on, put the switch on top of the power pack to position ON.

## Ready Light

Located on back of grip handle. Unit may be flashed as soon as ready-light glows.

## Open-flash button

On back of flash head, left side. Serves for flashing unit when not synchronized to shutter (with shutter set to "B" or "T"), also for testing unit.

## Determining correct exposure

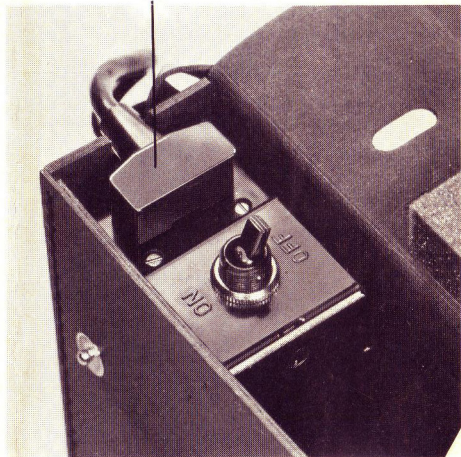
WITH TELECOMPUTER

1. Align ASA rating of film with fixed indicator

(3) Power cord



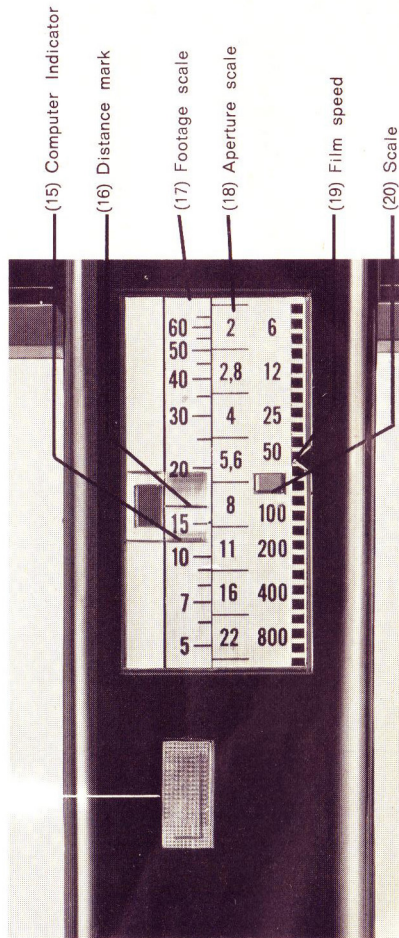
(3) Power cord



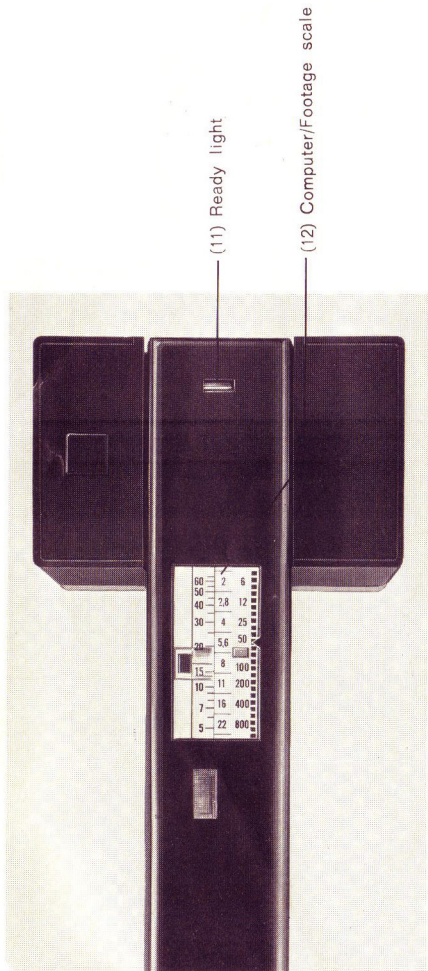
on right edge of computer panel by moving the sliding ASA scale up or down.

2. Move sliding indicator on left side of computer panel until it clicks in place opposite desired lens aperture marking on adjacent scale. The Mecablitz 403 offers a choice of 5 aperture settings with Telecomputer exposure, giving you full control over depth-of-field. Green signal on indicator signifies permissible apertures; if green is not visible, then computer operation is not possible. Either select a computerized F/stop or shoot manually. (For manual operation see page 7).
3. Set lens aperture to same aperture as selected on computer panel.

Now, when the unit is triggered, the light sensor will automatically evaluate subject brightness and distance and adjust the flash



Indicator light



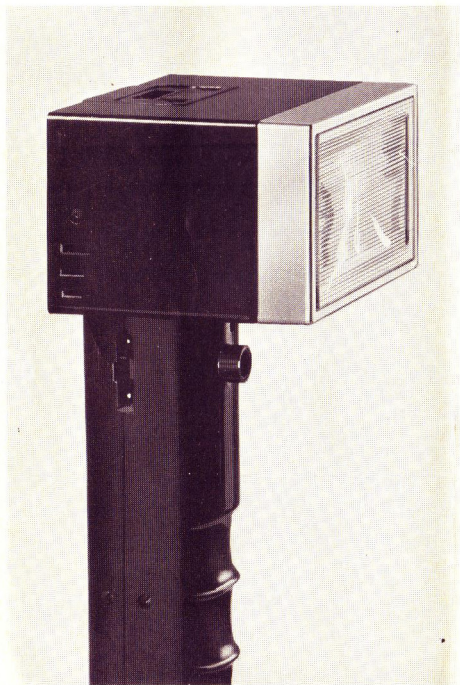
duration accordingly to produce correct exposure.

### **Bounce flash with Telecomputer control**

With flash head tilted to desired angle, use the open flash button to fire the unit (simulating the actual shot) while watching the circular green indicator below the computer scale. If this indicator flashes your subsequent exposure will be correct. If it fails to flash, set both computer panel and lens aperture for a larger F/stop.

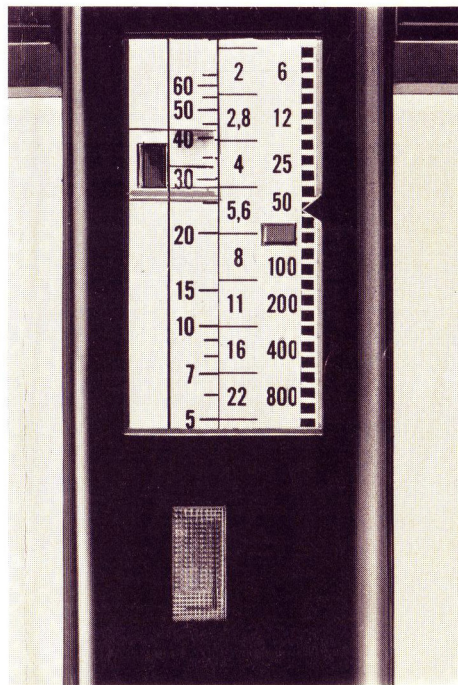
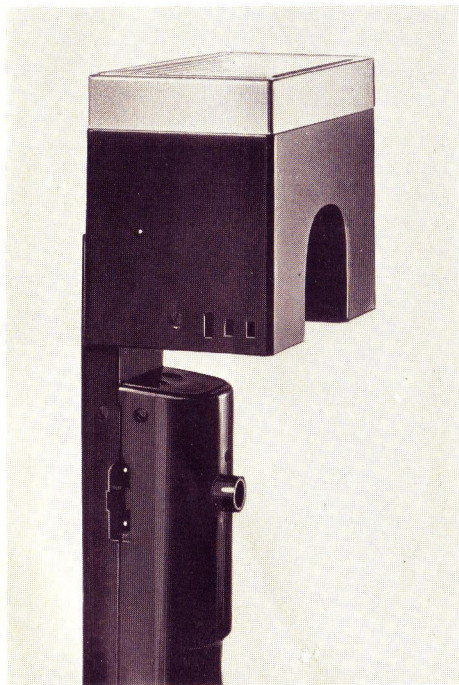
### **Manual operation without Telecomputer**

Slide the computer panel indicator to its lowest position (green signal disappears), disengaging the automatic control. Now you can use the panel as a conventional exposure





Filmspeed 50 ASA  
Aperture F/4  
Distance approx. 30 FT.



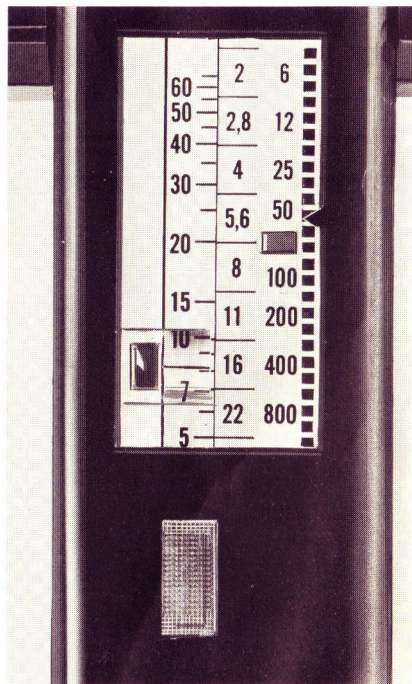
calculator. Determine the flash-to-subject distance and locate the corresponding number on the distance scale at the left side of the panel. The aperture opposite that number on the adjacent scale will produce correct exposure. Adjust your lens aperture accordingly.

### Selecting the shutter speed

Between-the-lens shutters with X-synch may be set to any speed. However, 1/125th second or faster is recommended to avoid "ghost" images that might result from ambient light. Focal plane shutters should be set to the speed recommended in your camera manual for use with electronic flash.

### Changing the battery

Battery type EVEREADY no. 497 510 V is used with Mecablitz 403. Before putting a new battery into the compartment, make sure that the



polarity according to the imprint on the bottom of the bag is properly set. Beforehand, remove carefully the protective foil from battery contacts. Battery contacts must by no means be touched, because they have a dangerous voltage of 510 V.

If the recycling time becomes more than 30 seconds, the battery is largely worn out and has to be exchanged by a new one.

## **Mecablitz 403 specifications**

Power Source:

Battery EVEREADY No. 497510 Volt

Light Output, BCPS\*:

7000

Guide No. for Kodachrome II (25 ASA):

93

Recycling Time:

approx. 6 seconds\* to 1 second

Angle of Coverage:

65°

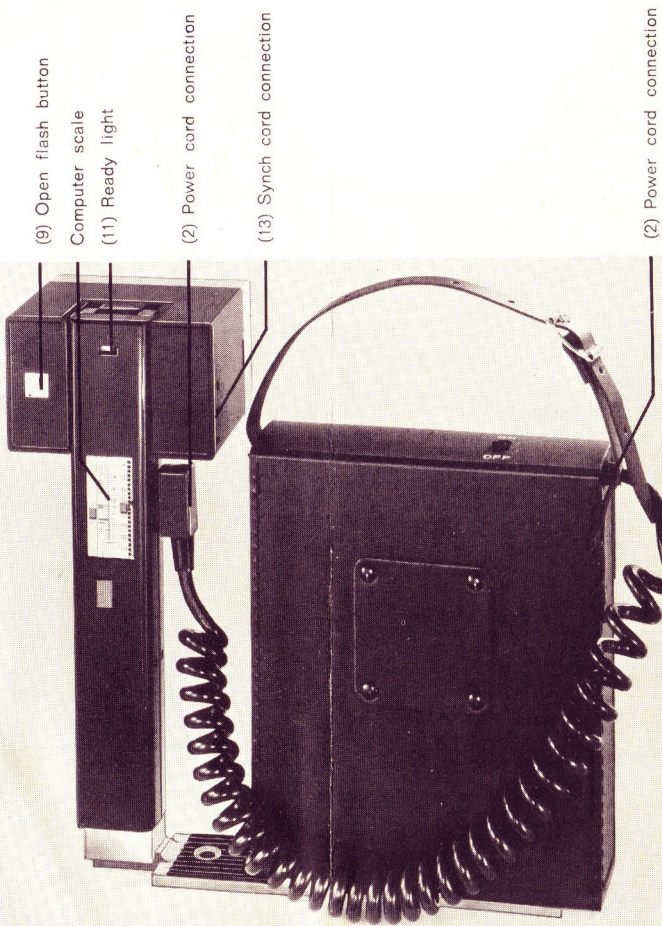
Color Temperature:

5500° K

Number of flashes:

from 500 upto 2000

\* Applies only to non-automatic operation  
(without Telecomputer).



## TELECOMPUTER EXPOSURE DATA

SETTING	INDICATOR	Full Power	APERTURE			F STOP	
			ASA 25	ASA 65	ASA 80	ASA 100	ASA 400
1	clear (Non Auto)	—	—	—	—	—	—
2	green (Auto)	13 ft.	8	11—16	16—22	22	32
3	green (Auto)	17 ft.	5.6	8—11	11—16	16	22
4	green (Auto)	24 ft.	4	5.6—8	8—11	11	16
5	green (Auto)	34 ft.	2.8	4—5.6	5.6—8	8	11
6	green (Auto)	45 ft.	2	2.8—4	4—5.6	5.6	8

All specifications subject to change without notice.

11. 73