

WILSONWERKS ARCHIVES

This camera manual is for reference and historical purposes, all rights reserved.

This cover page is copyrighted material. This document may not be sold or distributed without the express consent of the publisher.

©2008-2012 wilsonwerks Llc

ENLARGE YOUR VISION OF THE EXCITING WORLD WITH MINOLTA BINOCULARS

Whether you're experiencing life's exciting moments at the stadium, the theater, the mountains, or the ocean, Minolta binoculars bring you so close to the action that you feel a part of it. Minolta Autofocus, Standard, Compact, Pocket, and Weathermatic styles deliver the kind of sharp, precise images you've come to expect from Minolta. More than ever, Minolta quality makes owning a pair of Minolta binoculars clearly worthwhile.



The models shown are just a sample of Minolta expansive binocular lineup.

9229-9502-11 (P9603-B409)

Minolta Co., Ltd.

Printed in Japan

A Guide to Advanced Photography with Minolta SLR Cameras and Accessories

Your new Minolta SLR camera can introduce you to an endless range of exciting images you can create. Just combine your imagination with the wide assortment of Minolta accessories.

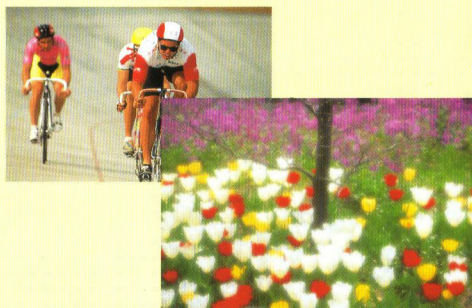
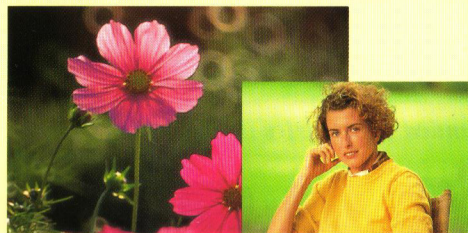
WHAT KIND OF PHOTOGRAPHS DO YOU WANT TO TAKE?

(1) **TRAVEL:** Scenic landscapes, pictures of your family or friends in front of famous landmarks, and other shots documenting your trip.

(2) **SPORTS/ACTION:** Freeze action or create blurred motion photographs of fast moving subjects.

(3) **PORTRAITS:** Beautiful photographs of your family and friends.

(4) **CANDIDS:** Candid shots of people anywhere, anytime.



(5) **SPECIAL OCCASIONS:** Photographs documenting important, once-in-a-lifetime events like graduations and weddings.

(6) **CLOSEUPS:** Pictures capturing the intricate detail of a flower or insect.

(7) **PANORAMA:** Beautiful, sweeping landscapes.

(8) **OUTDOOR/NATURE:** Photographs of scenic landscapes, animals, and birds.

CHOOSING A LENS

One of the greatest advantages of using an SLR camera is the ability to change lenses. Telephotos, wideangles, macros, and zooms. They change the way your camera views the scene and enable you to add greater impact and interest to your photographs. To give you a better understanding of interchangeable lenses, let's first examine lens focal length and aperture.

When you look at the front of a lens, you will find information similar to the following:

AF ZOOM 24-85mm 1:3.5 (22)-4.5
(1) (2) (3) (4)

(1) is the focal length range of lens; (2) is the largest aperture at the shortest focal length; (3) is the smallest aperture at any focal length; and (4) is the largest aperture at the longest focal length.



Focal Length and Angle of View

Lenses are generally divided into three categories based on the angle they "see" a scene: normal, wideangle, and telephoto; zoom lenses can cover two or more of these. Lenses from 40mm to 50mm in focal length are considered "normal" or "standard" because they "see" approximately the way your eyes do. "Wideangle" lenses are those with focal lengths shorter than 40mm, such as 35, 28, or 24mm. These lenses literally "see" more of a scene than a normal lens and are best for photographing groups of people and landscapes. "Telephoto" lenses have focal lengths longer than 50mm and give you more "photographic reach". They should be used when you are not able to get close to your subject. A 135mm lens is an ideal choice for taking candid family or friends. For sports or wildlife, try a 200 or 300mm telephoto lens.

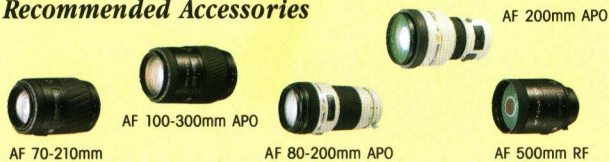
Sports/Action

If you can't get close to the action, select a tele lens (100mm or greater) to help you bridge the distance. When you photograph indoors, a powerful accessory flash is also essential. The Sports card will ensure optimum camera control at all times.



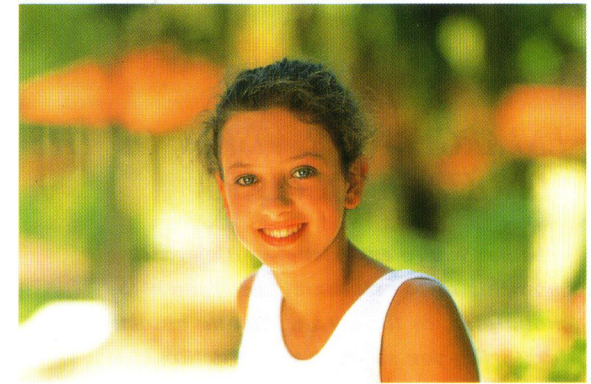
Photographing sports indoors will require a fast film speed to allow you to use fast shutter speeds to stop action. A powerful accessory flash will also provide flash coverage over long distances. For best results when using slow shutter speeds to blur motion, use a tripod.

Recommended Accessories



A fast lens (large aperture) is necessary for sports.

Portraits



When photographing portraits, use large apertures to make your subject stand out clearly against an out-of-focus background. When shooting under natural lighting, use a white board or paper to fill in harsh facial shadows. For creative flash portraits use Remote/Wireless off-camera operation and ratio control which are available with the Program Flash 5400HS and 3500xi.

Recommended Accessories



Good separation of subject and background is obtained with focal lengths from 80mm to 200mm.

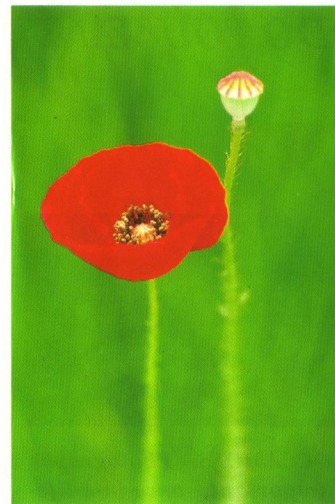
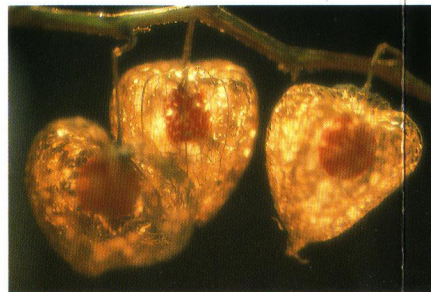
Special Occasions

Weddings, graduations, and formal parties require you to take individual portraits, as well as group photos, in rapid succession with little or no time to change lenses. Therefore, a lens with wide focal length range and a short minimum focal length is best. Bounce flash, available with Program Flash 5400HS and 3500xi, gives you more natural lighting by eliminating unflattering shadows.



Closeups

Diffused flash can enhance the texture and shape of the subject. Diffuse light from an accessory flash with a white handkerchief; the built-in flash can be diffused with the Closeup Diffuser CD-1000. For maximum sharpness, use a tripod.



Panorama

Give a unique look to any photo by using Minolta's Panorama Adapter and a wideangle lens. Sweeping landscapes, action, and souvenir group photos take on added impact, and the Panorama Adapter can be used with any Minolta AF lens.

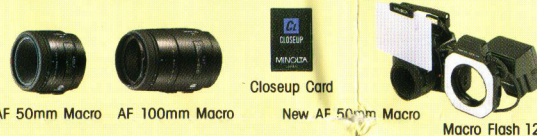


Recommended Accessories



Because subject distances change rapidly, a wide-to-tele zoom is ideal.

Recommended Accessories



Close-up Diffuser CD-1000

The dedicated macro flash provides excellent lighting for closeup subjects.

Recommended Accessories



Convert your camera to the panorama format and take great landscape shots.

AF xi 28-80mm AF xi 35-200mm Travel Card Fantasy Card
to-tele zoom is ideal.

Closeup Card New AF 50mm Macro Macro Flash 1200 AF Set-N
lighting for closeup subjects.

Panorama Adapter AF 24mm AF 24-85mm AF xi 28-105mm
and take great landscape shots.

MINOLTA FLASH UNITS

Minolta's broad range of flash units expands the creative lighting possibilities available with your camera.



Program Flash 5400HS

This powerful, versatile flash unit has a maximum guide number of 54 in meters (177 in feet) at ISO 100. TTL flash metering controls the 5400HS in all exposure modes. The 5400HS also offers remote/wireless off-camera operation, multi-directional bounce capability, automatic zoom flash, multi-burst flash operation, ratio control, and when used with the 700si, high-speed sync flash up to 1/8000 sec.



Program/Maxxum Flash 3500xi

The 3500xi features a maximum guide number of 35 in meters (135 in feet) at ISO 100, and automatic zoom flash. The flash head tilts up to 90 degrees for bounce flash applications. The 3500xi also offers remote/wireless off-camera TTL control and ratio control.



Program/Maxxum Flash 2000xi

The 2000xi features a maximum guide number of 20 in meters (66 in feet) at ISO 100. It provides flash coverage for the 35mm focal length setting and for 28mm with the wideangle adapter.



Wireless Remote Flash Controller

This accessory attaches to the 700si's or 9xi's hot shoe to control one or more off-camera flash units using infrared signals. When two flash units are placed off-camera, a lighting ratio of 2:1 can be obtained. Combinations of the 5400HS, 5400xi and 3500xi can be used, but not two 3500xi flash units. Remote/wireless off-camera flash control is possible with subjects from 20cm (0.6 ft.) to 5m (16 ft.) away.



Macro Flash 1200AF Set-N

This flash set provides versatile illumination for macro shooting in medical, scientific and hobby photography. Four individually selectable flash tubes set at right angles to each other can be rotated around the lens and fired separately or in combination to control or eliminate shadows.

Benefits of the Accessory Flash Unit

1. Greater Flash Range



The accessory flash unit lets you to shoot at greater distances from your subject than the built-in flash will allow. This is an advantage when photographing indoor sports and special occasions.

2. Remote/Wireless Off-Camera TTL Flash Control

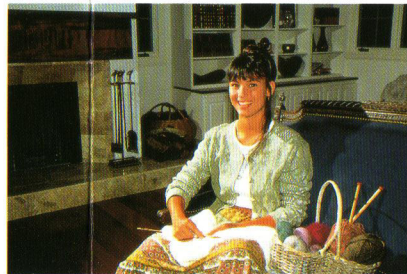
For greater flash versatility, you can control the 5400HS or 3500xi off-camera via remote/wireless off-camera TTL flash control.



Ratio Control: In remote/wireless off-camera mode, you can use the accessory flash in combination with the camera's built-in flash in a 2:1 lighting ratio.



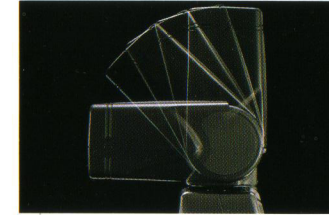
Built-in flash only



2:1 lighting ratio

3. Bounce Flash

For softer, more natural lighting indoors, the 5400HS and 3500xi flash heads tilt a full 90 degrees and the 5400HS swivels 270 degrees.



4. Program Flash 5400HS Provides Other Versatile Features

High-Speed Flash Sync: With the 700si and 5400HS, you can use any shutter speed with flash. This allows you to choose large apertures when shooting portraits outdoors while using the flash to fill in harsh facial shadows.



Conventional flash at 1/200 sec.



HSS at 1/2000 sec. with the 5400HS flash attached

Multi-Flash: To create a series of images on a single frame, the 5400HS offers multi-flash. This is suitable for the study of moving objects.



Modeling Flash: The 5400HS lets you perform a multi-burst test flash to see the shape and size of shadows before you shoot.

to-tele zoom is ideal.

AF xi 28-80mm AF xi 35-200mm Travel Card Fantasy Card AF 28-80mm

Closeup Card New AF 50mm Macro Macro Flash 1200 AF Set-N lighting for closeup subjects.

AF 50mm Macro AF 100mm Macro New AF 50mm Macro Macro Flash 1200 AF Set-N

Panorama Adapter AF 24mm AF 24-85mm AF xi 28-105mm and take great landscape shots.

Panorama Adapter AF 24mm AF 24-85mm AF xi 28-105mm

MINOLTA FLASH UNITS

Minolta's broad range of flash units expands the creative lighting possibilities available with your camera.



Program Flash 5400HS
This powerful, versatile flash unit has a maximum guide number of 54 in meters (177 in feet) at ISO 100. TTL flash metering controls the 5400HS in all exposure modes. The 5400HS also offers remote/wireless off-camera operation, multi-directional bounce capability, automatic zoom flash, multi-burst flash operation, ratio control, and when used with the 700si, high-speed sync flash up to 1/8000 sec.



Program/Maxxum Flash 3500xi
The 3500xi features a maximum guide number of 35 in meters (135 in feet) at ISO 100, and automatic zoom flash. The flash head tilts up to 90 degrees for bounce flash applications. The 3500xi also offers remote/wireless off-camera TTL control and ratio control.



Program/Maxxum Flash 2000xi
The 2000xi features a maximum guide number of 20 in meters (66 in feet) at ISO 100. It provides flash coverage for the 35mm focal length setting and for 28mm with the wideangle adapter.



Wireless Remote Flash Controller
This accessory attaches to the 700si's or 9xi's hot shoe to control one or more off-camera flash units using infrared signals. When two flash units are placed off-camera, a lighting ratio of 2:1 can be obtained. Combinations of the 5400HS, 5400xi and 3500xi can be used, but not two 3500xi flash units. Remote/wireless off-camera flash control is possible with subjects from 20cm (0.6 ft.) to 5m (16 ft.) away.



Macro Flash 1200AF Set-N
This flash set provides versatile illumination for macro shooting in medical, scientific and hobby photography. Four individually selectable flash tubes set at right angles to each other can be rotated around the lens and fired separately or in combination to control or eliminate shadows.

Benefits of the Accessory Flash Unit

1. Greater Flash Range



The accessory flash unit lets you to shoot at greater distances from your subject than the built-in flash will allow. This is an advantage when photographing indoor sports and special occasions.

2. Remote/Wireless Off-Camera TTL Flash Control

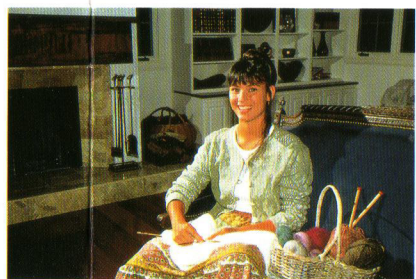
For greater flash versatility, you can control the 5400HS or 3500xi off-camera via remote/wireless off-camera TTL flash control.



Ratio Control: In remote/wireless off-camera mode, you can use the accessory flash in combination with the camera's built-in flash in a 2:1 lighting ratio.



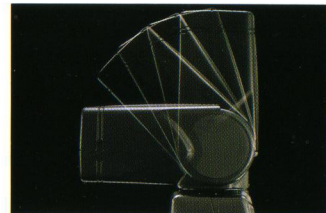
Built-in flash only



2:1 lighting ratio

3. Bounce Flash

For softer, more natural lighting indoors, the 5400HS and 3500xi flash heads tilt a full 90 degrees and the 5400HS swivels 270 degrees.



4. Program Flash 5400HS Provides Other Versatile Features

High-Speed Flash Sync: With the 700si and 5400HS, you can use any shutter speed with flash. This allows you to choose large apertures when shooting portraits outdoors while using the flash to fill in harsh facial shadows.



Conventional flash at 1/200 sec.



HSS at 1/2000 sec. with the 5400HS flash attached

Multi-Flash: To create a series of images on a single frame, the 5400HS offers multi-flash. This is suitable for the study of moving objects.



Modeling Flash: The 5400HS lets you perform a multi-burst test flash to see the shape and size of shadows before you shoot.