

# WILSONWERKS ARCHIVES

This camera manual is for reference and historical purposes, all rights reserved.

This cover page is copyrighted material. This document may not be sold or distributed without the express consent of the publisher.

©2008-2012 wilsonwerks Llc

# Specifications

**AF System:** Minolta's through-the-lens (TTL) phase-detection system with one CCD sensor; continuous AF/focus lock selected automatically according to subject movement; auto/manual-focus switchable manually; predictive focus control for moving subjects; AF sensitivity range: EV -1 to 17 (at ISO 100)

**Metering:** TTL-type; 8-segment honeycomb-pattern silicon photocell (SPC); metering range: EV 1-20 (ISO 100, f/1.4 lens)

**Exposure Modes:** Programmed AE (P-mode)

**Subject Program Modes:** Portrait mode, Landscape mode, Close-up mode, Sports action mode, Night portrait mode

**Built-in Flash:** Guide number 39 (in feet at ISO 100); flash coverage for 28mm lenses; recycling time: Approx. 2 sec.; pre-flash for red-eye reduction and wireless off-camera flash control available

**Film-Speed Setting:** Automatic setting for DX-coded films ISO 25-5000; Recommended range with flash: ISO 25-1000

**Shutter:** Electronically-controlled, vertical-traverse, focal plane type; Range: 1/2000 to 30 sec.; flash sync: 1/90 sec. or slower

**Film Transport:** Automatic with built-in motor drive; auto threading; auto advance to first frame; single-frame or continuous advance (approx. 1 frame per second); automatic rewind or manual start of rewind

**Viewfinder:** Eye-level fixed roof mirror; field of view: 90%; magnification: 0.75 (with 50mm lens at infinity); -1 diopter

**Self-Timer:** Electronic with approx. 10-sec. delay; cancelable

**Power:** 6-volt 2CR5 lithium battery; Automatic battery check when camera is switched on

## Battery Performance:

Flash Use	68°F(20°C)	4°F(-20°C)
100%	15 rolls	5 rolls
50%	25 rolls	10 rolls
0%	70 rolls	25 rolls

Based on the following test conditions: 24-exposure roll of film; AF 35-70mm f/3.5-4.5 lens; autofocus from infinity to minimum focus distance and back three times; shutter-release button held partway down for 10 seconds before shutter release.

**Dimensions:** 5-13/16 x 4 x 2-11/16 in. (W x H x D)

**Weight:** 13-3/8 oz. without lens and battery

Specifications and accessories are based on the latest information available at time of printing and are subject to change without notice.

Minolta Co., Ltd.  
3-13, 2-Chome, Azuchi-Machi, Chuo-ku, Osaka 541, Japan

Minolta Corporation  
Head Office  
Los Angeles Branch  
Minolta Canada Inc.  
Head Office  
Vancouver Branch

101 Williams Drive, Ramsey, New Jersey 07446, U.S.A.  
11150 Hope Street Cypress, CA 90630, U.S.A.

369 Britannia Road East, Mississauga, Ontario L4Z 2H5, Canada  
106-3850 Jacombs Road, Richmond, B.C. V6V 1Y6, Canada



MINOLTA

300  
si

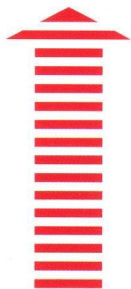
# NEW MAXXUM 300si

*A fast and simple way to create  
beautiful photography.*



ONLY FROM THE MIND OF MINOLTA

# Taking Beautiful Pictures Is Easy With Minolta's Autofocus SLR Technology At Your Fingertips.



## Just Press Here

### To Take Stunning Photographs.

The Minolta Maxxum 300si takes full control automatically so your pictures come out looking beautiful. This camera makes it simple for you to take the high-quality pictures that only an AF SLR can take. Now you can concentrate on pure picture taking without worrying about complicated settings or adjustments. And you can experience the excitement of using the full range of Maxxum AF lenses, from 20mm wideangles to 600mm supertelephotos, plus macro, fisheye and other special lenses.

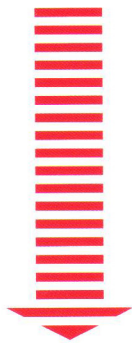




# Press Here

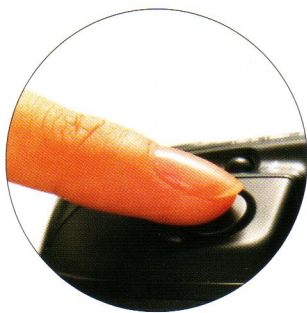
## To Make Great Shots Even Better.

The Maxxum 300si's Subject Program Selection lets you choose the setting that best suits a particular kind of scene: Portrait, Landscape, Close-Up, Sports Action or Night-Portrait. So go ahead. Just point the camera at your subject and push the button for a great picture that's exactly the way you want it.



**NEW**  
**MAXXUM 300si**





## Fully Automatic Operation. To Take Beautiful Photographs Day Or Night, Just Point And Shoot.

The Minolta Maxxum 300si's fully automatic operation lets you take beautiful AF SLR pictures with ease. Simply slide the main switch to "ON", aim at your subject, then push the shutter-release button. You can use any Maxxum AF lens to make your pictures more exciting and creative, effortlessly. It's as easy as using a compact camera.

### Autofocus And Autoexposure

Autofocusing is effortless and precise with the Maxxum 300si's high-response AF system. This system will keep fast moving subjects in precise focus. The camera's autoexposure system automatically adjusts the settings to allow you to capture those memorable moments even when shooting in the most difficult lighting conditions.

### Automatic Flash With Red-Eye Reduction

The Maxxum 300si's built-in flash automatically fires to make sure that back-lit subjects and subjects in the dark are properly illuminated. Even flash portraits come out looking great, thanks to the easy-to-use red-eye reduction feature.







## Subject Program Selection. Simply Select A Specialized Program To Produce The Results You've Always Wanted.

The Minolta Maxxum 300si's exclusive Subject Program Selection lets you choose the kind of photo you want from five different modes: Portrait, Landscape, Close-Up, Sports Action and Night-Portrait. Just select the desired mode icon and press the shutter-release button. The camera makes all the settings automatically, so you can concentrate on having fun and enjoying the exciting results you get from real AF SLR photography.



Portrait Mode



Landscape Mode



Close-Up Mode



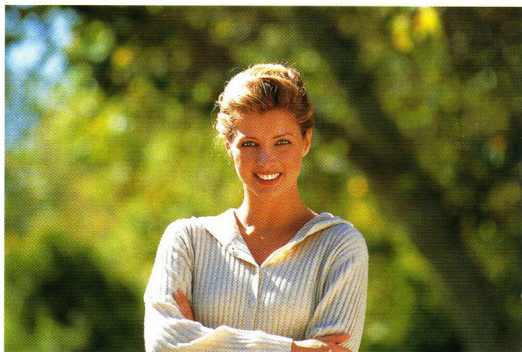
Sports Action Mode



Night-Portrait Mode



Portrait  
Mode

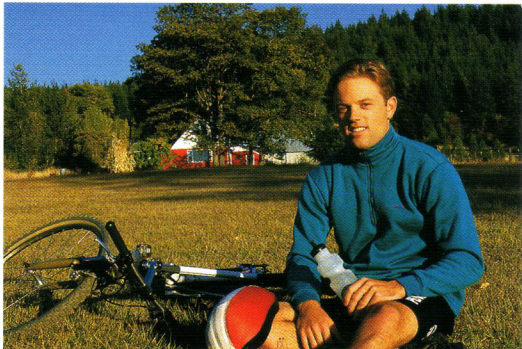


When you select Portrait Mode, the Maxxum 300si makes your subject stand out from the background, which is intentionally softened as much as possible.

*AF 70-210mm f/4.5-5.6*



Landscape  
Mode



The Maxxum 300si's Landscape Mode is the best choice for taking pictures of family or friends standing in front of a landmark or other point of interest. This setting automatically makes both your subject as well as the background sharp.

*AF 35-70mm f/3.5-4.5*



**Close-Up  
Mode**

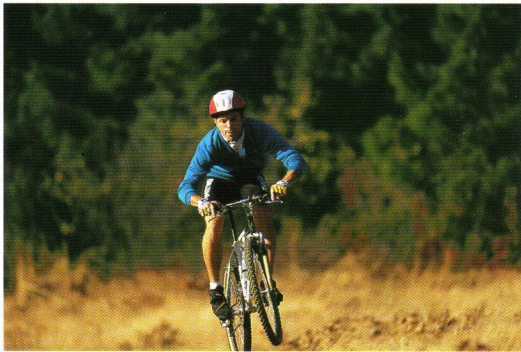


This mode lets you enter the spectacular world of close-up photography. With Close-Up Mode, your main subject like this delicate flower part is in focus while the background is beautifully softened.

*AF 50mm f/2.8 Macro*



**Sports  
Action  
Mode**



Capturing pictures of sports and other fast moving subjects is easy with the Maxxum 300si's Sports Action Mode. The camera keeps focusing continuously and automatically with the fastest possible shutter speeds, allowing you to capture dramatic fast-action photos by freezing motion.

*AF 70-210mm f/4.5-5.6*



**Night-  
Portrait  
Mode**



Night-Portrait Mode lets you take beautiful flash portraits in the evening, capturing both a romantic night scene in the background and your subject in front in a well-balanced exposure.

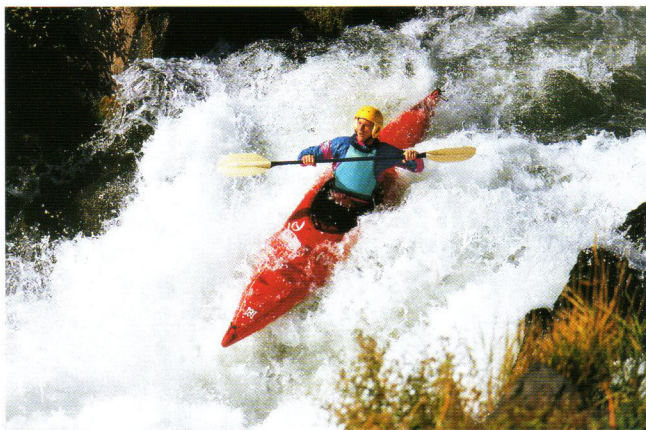
*AF 35-70mm f/3.5-4.5*





# Maxxum AF Lens System. When You Change Lenses, You Change Into A More Creative Photographer.

When you use interchangeable lenses with your Minolta Maxxum 300si, you enter the exciting and creative realm of true AF SLR photography. Whether you use a wide angle, telephoto or macro lens, you can tailor your pictures to your personal creative expression. With the Maxxum AF lens system, the Maxxum 300si puts a whole new world of creative pictures within easy reach.



New AF 75-300mm f/4.5-5.6 in Sports Action Mode

## Sports Action Photography

Sports action presents a unique challenge where you must respond in a split-second. Maxxum AF telephoto lenses are the ideal choice for this kind of photograph. These long lenses bring all the action up close and provide clear, bright images.

New AF 75-300mm f/4.5-5.6



AF 70-210mm f/4.5-5.6

AF 100-300mm f/4.5-5.6 Apo



AF 100mm f/2.8 Macro in Close-Up Mode

## Close-Up Photography

The Maxxum 300si is a great way to explore the world of close-up photography. Here, you'll discover a small, yet fascinating corner of nature that often goes unnoticed. Maxxum AF Macro lenses bring the tiniest details into razor-sharp focus.

AF 100mm f/2.8 Macro



AF 50mm f/2.8 Macro

AF 50mm f/3.5 Macro



New AF 100mm f/2.8 SOFT FOCUS in Portrait Mode

### Portrait Photography

Creating beautiful portraits of people is one of the most rewarding aspects of AF SLR photography. Maxxum's AF mid-telephoto lenses with large apertures are the best choice for creating portraits because they allow you to isolate your subject from the background. Many Maxxum AF lenses are ideal for portraits, like our new AF 100mm f/2.8 SOFT FOCUS lens, which can hide minor wrinkles and skin flaws.

AF 70-210mm  
f/4.5-5.6



AF 85mm  
f/1.4 G

New AF 100mm  
f/2.8 SOFT FOCUS

## Angle Of View

WIDEANGLE



20mm



28mm



35mm



50mm

TELEPHOTO



100mm



135mm



200mm



300mm

STANDARD

# Maxxum 300 si Technology

The Minolta Maxxum 300si is specially designed for complete ease of use and unmatched performance. No other AF SLR comes close to this camera's simplicity and user-friendly operation.

## A F

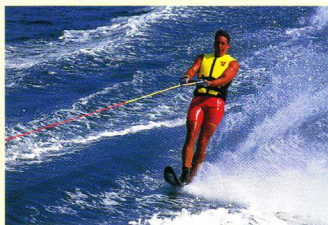
### Wide Focus Area

The Maxxum 300si's wide focus area allows you to focus easily and precisely even on active subjects. Using a highly sensitive AF sensor, the 300si can focus accurately even in low light conditions.



### Predictive Focus Control

If your subject is moving, Predictive Focus Control keeps focusing precisely and continuously right up to the exact moment of exposure. Automatic focus-mode selection determines whether your subject is moving or still.



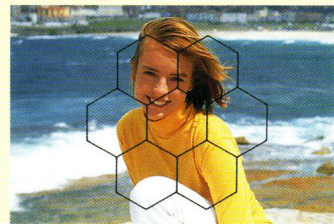
### Flash AF Auxiliary Light

The flash AF auxiliary light automatically fires to ensure precise focus even in total darkness. Before the flash fires, this light illuminates the subject for autofocusing.



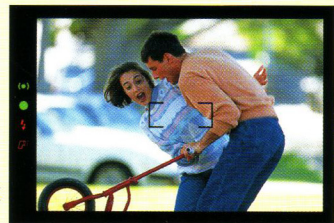
### 8-Segment Honeycomb-Pattern Metering

The Maxxum 300si's 8-segment honeycomb-pattern metering precisely measures exposure levels in 8 separate areas of the picture to make sure your subject is correctly exposed. The uniform size and shape of the segments allow the metering pattern to match your subject.



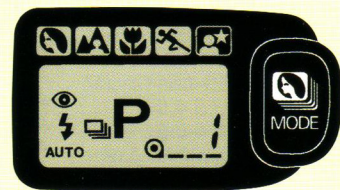
## Viewfinder

Your pictures will come out looking exactly as the Maxxum 300si's viewfinder displays them. The Maxxum 300si's viewfinder screen provides a bright and clear image for comfortable viewing, so you'll never make a mistake in framing your picture—what you see is what you get.



## L C D

You can monitor camera settings and operations easily and quickly by checking the Maxxum 300si's large-size body LCD panel.





## Maxxum System Accessories

Minolta's complete line of Maxxum AF SLR lenses and accessories is ready to help make your adventure into AF SLR photography both exciting and rewarding.

### Maxxum Autofocus Lens System

#### AF Zoom Lenses

AF 24-50mm f/4  
 AF 24-85mm f/3.5-4.5  
 AF 28-70mm f/2.8 G  
 AF 28-80mm f/4-5.6  
 AF 28-85mm f/3.5-4.5  
 New AF 28-105mm f/3.5-4.5  
 AF 35-70mm f/3.5-4.5  
 AF 70-210mm f/3.5-4.5  
 AF 70-210mm f/4.5-5.6  
 New AF 75-300mm f/4.5-5.6  
 AF 80-200mm f/2.8 Apo G  
 AF 100-300mm f/4.5-5.6 Apo  
 AF 100-300mm f/4.5-5.6

#### AF Zoom xi Lenses

AF Zoom xi 28-80mm f/4-5.6  
 AF Zoom xi 28-105mm f/3.5-4.5  
 AF Zoom xi 35-200mm f/4.5-5.6 Macro  
 AF Zoom xi 80-200mm f/4.5-5.6 Macro  
 AF Zoom xi 100-300mm f/4.5-5.6 Macro

#### AF Power Zoom Lens

AF Power Zoom 35-80mm f/4-5.6 Macro

#### Wideangle Lenses

AF 16mm f/2.8 Fisheye  
 AF 20mm f/2.8  
 AF 24mm f/2.8  
 AF 28mm f/2  
 AF 28mm f/2.8  
 AF 35mm f/1.4 G  
 AF 35mm f/2

#### Standard Lenses

AF 50mm f/1.4  
 AF 50mm f/1.7

#### Telephoto Lenses

AF 85mm f/1.4 G  
 AF 100mm f/2  
 New AF 100mm f/2.8 SOFT FOCUS  
 AF 200mm f/2.8 Apo G  
 AF 300mm f/2.8 Apo G  
 New AF 300mm f/4 Apo G  
 AF 600mm f/4 Apo G

#### Reflex Lens

AF Reflex 500mm f/8

#### AF Tele Converters

AF 1.4X Tele Converter II Apo  
 AF 2X Tele Converter II Apo

#### Macro Lenses

AF 50mm f/2.8 Macro  
 AF 50mm f/3.5 Macro  
 AF 100mm f/2.8 Macro  
 AF Macro Zoom 3X-1X f/1.7-2.8

### Flash System

Maxxum Flash 5400HS  
 Maxxum Flash 3500xi  
 Maxxum Flash 2000xi  
 Macro Flash 1200AF Set-N

"G" designates G-Lens group, a selection of large-aperture, high-performance lenses.

# Flash System

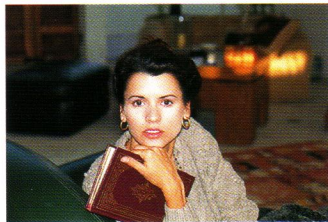
Minolta's Maxxum provides you with one of the largest AF SLR flash systems available today. With accessories like Maxxum Flash 5400HS, 3500xi and 2000xi, Minolta can meet all your flash photography needs, from providing a powerful flash range to using wireless control (5400HS, 3500xi) or even a modeling flash (5400HS).



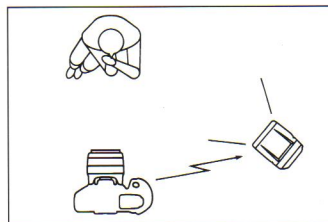
## Wireless Off-Camera TTL Flash Control

This unique wireless off-camera operation adds an entirely new dimension to flash photography. It lets you use your Maxxum 300si and the Maxxum Flash 5400HS or 3500xi in a wide variety of positions and lighting situations without troublesome connecting cables. With a little practice, you can achieve dramatic lighting effects like the pros!

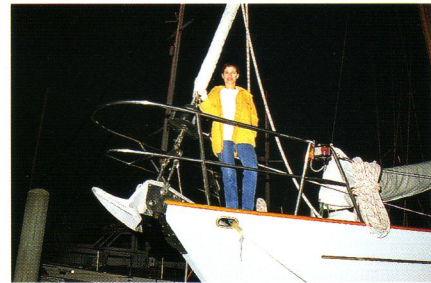
*With Wireless Off-Camera TTL Flash Control*



*Without Wireless Off-Camera TTL Flash Control*



*You can position the wireless off-camera flash to provide a more three-dimensional effect on your subject.*



## High-Power Flash

Maxxum's high-powered accessory flash units help you take effective flash pictures of subjects that are difficult to get close to, like a subject located across a pool of water or on a yacht in a harbor.