

WILSONWERKS ARCHIVES

This camera manual is for reference and historical purposes, all rights reserved.

This cover page is copyrighted material. This document may not be sold or distributed without the express consent of the publisher.

©2008 wilsonwerks Llc



SYSTEM ACCESSORY GUIDE FOR THE MINOLTA X-SERIES SLR



Now that you own a distinguished Minolta single-lens reflex camera, you have the nucleus for one of the world's finest photography systems.

Your Minolta SLR camera is the key to a wonderful new world filled with exciting photographic opportunities. Complementing your camera with Minolta system accessories will vastly expand your potential to explore this world to its inner and outer limits.

Minolta makes hundreds of lenses, accessories, and attachments for use with Minolta SLR cameras.

Be sure you get the genuine products; they are the only ones that will give you maximum performance every time.

INTERCHANGEABLE LENSES

A major advantage of SLR cameras is their ability to accept many different types of lenses, providing you with the right degree of coverage for each situation. Look through some of your photographs. Are heads cut off or people missing in group shots? Are faraway subjects too small and lacking in detail? Do close-ups and still lifes not get close enough? If you answered 'yes' to any of these questions, one or more interchangeable lenses can greatly improve the pictures you take.

Minolta is one of the few camera manufacturers in the world who insist upon making their own optical glass and lenses: Only in this way can a camera company ensure the precise optical and mechanical design properties so vital to advanced photography.



16mm



24mm



28mm



35mm



50mm



85mm



135mm



210mm



300mm

Zoom lenses

Be sure to consider zooms when deciding on the lens system that best fits your needs. By building a complementary system that includes both fixed-focal-length lenses and zooms, you can reduce the number of lenses and overall weight of the equipment in your camera bag.

Select a zoom that covers the range you will use most often. Then add one or more of our wideangle, telephoto, or special-purpose lenses for situations that the zoom can't cover. For example, if people are your main subjects, Minolta's 35—70mm zoom can probably handle most of your shots. A 28mm wideangle for large groups and a 135mm telephoto for candid shots would be economical additions to your system.

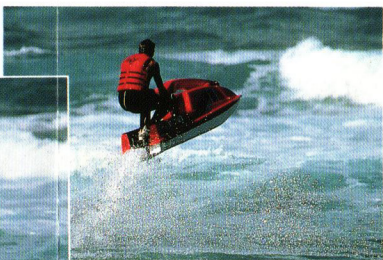
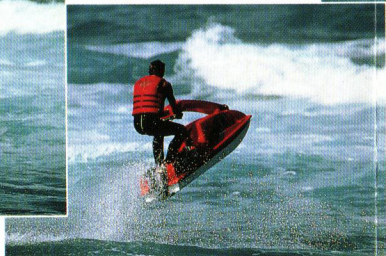
In addition to zooms and conventional fixed-focal-length lenses, Minolta offers a series of special-purpose lenses to give your photography an even greater degree of creative freedom. The catadioptric-type 250mm, 500mm, 800mm, and 1600mm RF lenses use precision mirrors to provide greater focal lengths with relatively little bulk. Or let the 50mm and 100mm Macro lenses introduce you to the exciting world of close-ups and photomacrography.



MOTOR DRIVE 1 & AUTO WINDER G

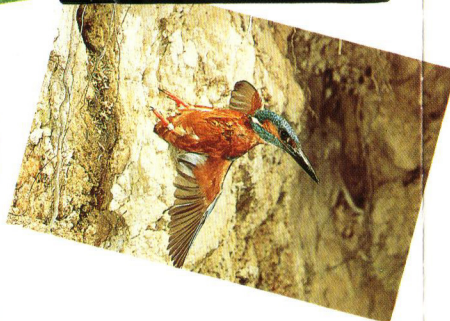
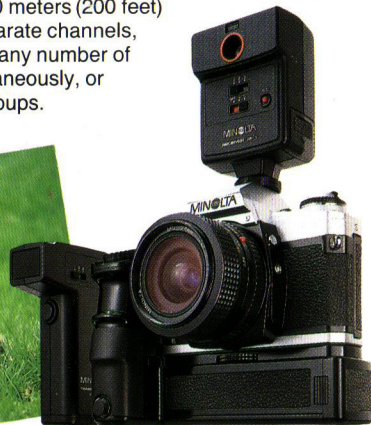
The Minolta Motor Drive 1 provides your camera with automatic film advance up to 3.5 frames per second, perfect for sports, news coverage, portraits, close-up or wildlife photography, and other action opportunities. The two Touch Switches provide instant metering and viewfinder readout, and are positioned on the sculptured body to promote easy holding either vertically or horizontally. This unit can be used with the Wireless Controller IR-1 Set for sequential photographs by remote control.

Also, the compact, quick-attaching Minolta Auto Winder G provides up to 2 frames per second automatic film winding. This unit is designed to attach quickly and easily to your camera with no access caps to remove or store. The film-advance mechanism stops automatically at the end of the roll, and film can be easily loaded or unloaded without removing the unit. Extremely quiet and smooth operation makes this accessory ideal for remote-control and close-up photography.



WIRELESS CONTROLLER IR-1 SET

The Minolta Wireless Controller IR-1 Set extends the versatility of your camera by permitting cordless infrared remote-control photography with the operator up to 60 meters (200 feet) away. Equipped with three separate channels, the IR-1 Set components allow any number of cameras to be operated simultaneously, or independently in up to three groups.



CLOSE-UP EQUIPMENT

Minolta offers an extensive array of SLR accessories to help you in close-up and macro photography. The Minolta Auto Bellows III offers such features as automatic aperture stop-down for lenses in both normal and reversed positions, and dual rack-and-pinion extension controls for precise adjustment of magnifications up to 3.8X.* The extremely lightweight Minolta Compact Bellows is perfect to take along on trips and field excursions, delivering magnifications up to 2.6X.* The Slide Copier AB-III, with shift controls for composing and cropping, can be attached to the Auto Bellows to copy slide transparencies in mounts or strips.

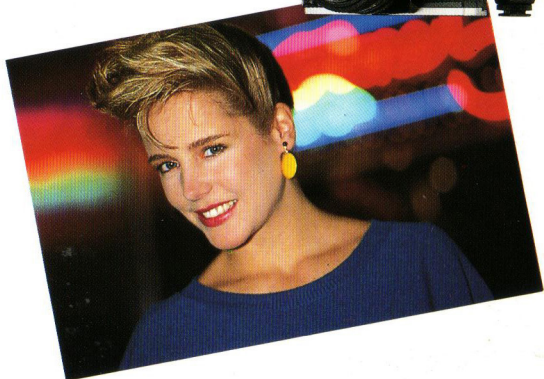
*with a standard 50mm lens



AUTO ELECTROFLASHES

Minolta's Direct Autoflash Metering makes taking a wider range of flash photos simpler and faster than with conventional systems. Combining the Minolta X-700 with one of the Minolta Auto Electroflashes—360PX, 280PX, 132PX, or Macro 80PX—you can be sure that exposure will always be perfect, due to the accuracy of through-the-lens, off-the-film light measurements. Flash techniques such as close-up with flash, bounced or diffused lighting, and multiple flash techniques can be employed with excellent results. Any lens aperture may be used, and thus the flash range can be adjusted accordingly.

Also, Minolta Auto Electroflashes 200X, 132X, and 118X offer you simplicity and versatility so that even beginners can handle low-light situations with ease. These units have a sensor that receives light reflected from the subject and turns the flash off at the micro-second that proper exposure is reached. All of these flashes provide dedicated-flash functions that electronically set the camera for proper X-sync and activate a flash-ready signal in the viewfinder.



OTHER

Minolta polarizing, color, and Portrayer filters are made with the same care and precision as our Minolta lenses. They are invaluable aids for creating special photographic effects, and easily attach to any Minolta lens. For remote shutter release, try the Remote Cord S or L. These high-quality accessories help keep the camera steady while taking pictures, and feature a coaxial-type lock for time exposures.

For further information on Minolta equipment and accessories, contact your local Minolta dealer.

