

# WILSONWERKS ARCHIVES

This camera manual is for reference and historical purposes, all rights reserved.

This cover page is copyrighted material. This document may not be sold or distributed without the express consent of the publisher.

©2008 wilsonwerks Llc



**Nikkormat FTN**

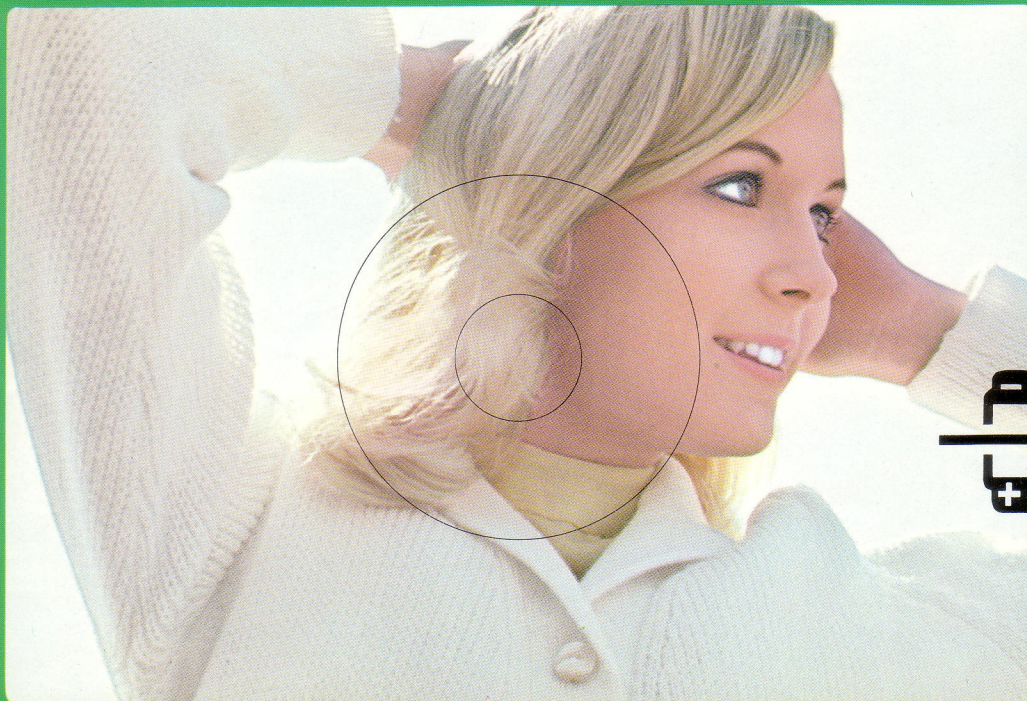


# Nikkormat FTN

The professional system camera  
that takes the guesswork  
out of picture-taking



The Nikkormat FTN combines the highest precision, versatility and responsiveness with automatic features so easy to use anyone can master them in minutes. Its ingenious built-in exposure meter delivers perfect exposures. Superb Nikkor optics guarantee that your pictures will be sharp, too. And you can choose from among 40-plus lenses and a host of other accessories that let you take just about any kind of photographs you can imagine. So whether you're a professional photojournalist or a holiday snaphooter, choose the all-around camera built with you in mind — the superlative Nikkormat FTN.



125 60 30

# Accurate, center-weighted thru-the-lens exposure metering

The Nikkormat FTN features a center-weighted light-metering system that measures the light over the entire focusing screen but favors a 12mm-diameter circle in the center. The emphasis is on the main subject, but no part of the picture is ignored. This makes it easy to get correct exposures quickly, even in difficult lighting situations.

## **Fast fingertip operation**

The meter is cross-coupled to the camera's shutter speed and aperture controls. All you do is look through the viewfinder and adjust shutter speed or aperture until the meter needle is centered between the plus and minus brackets.

## **Full-aperture measurement**

The Nikkormat's metering system takes advantage of the automatic diaphragm feature of Nikkor Auto lenses to measure light with the lens at maximum aperture. This makes for quick, convenient exposure measurement without any darkening of the finder image.

## **Wide-ranging sensitivity**

The Nikkormat FTN works with any film speed from ASA 12 to 1600 — its sensitivity extends from EV 3 to 17.

**Independent mirror control**

*The mirror can be locked up out of the optical path by sliding the mirror lock. This is a great advantage in close-up or other high-magnification work where the slightest vibration is critical. It is also necessary with some Fisheye lenses which must be used with the mirror locked up.*

**Full flash synchronization**

*Two flash contacts let you use either bulbs or speedlight. The Nikkormat synchronizes with electronic flash at speed up to 1/125 second.*

**Fast lens interchangeability**

*The Nikon bayonet mount simplifies lens changing. Just press the lens release button, twist off the lens and twist on a new one.*

**Fingertip shutter speed control**

*Shutter speeds are controlled by a ring located around the lens next to the aperture control ring rather than the usual dial on top of the camera. This makes it easier to adjust the shutter speed while looking through the camera's viewfinder.*

**Flash Synchronization Terminals**

**Lens-Lock Release Button**

**Shutter-Speed Lever**

**Camera Back Latch**

**Maximum Aperture Reminder**

**Battery Chamber**

**ASA Film Speed Scale**

**ASA Film Speed Index**

**Tripod Socket**

**Self-timer**

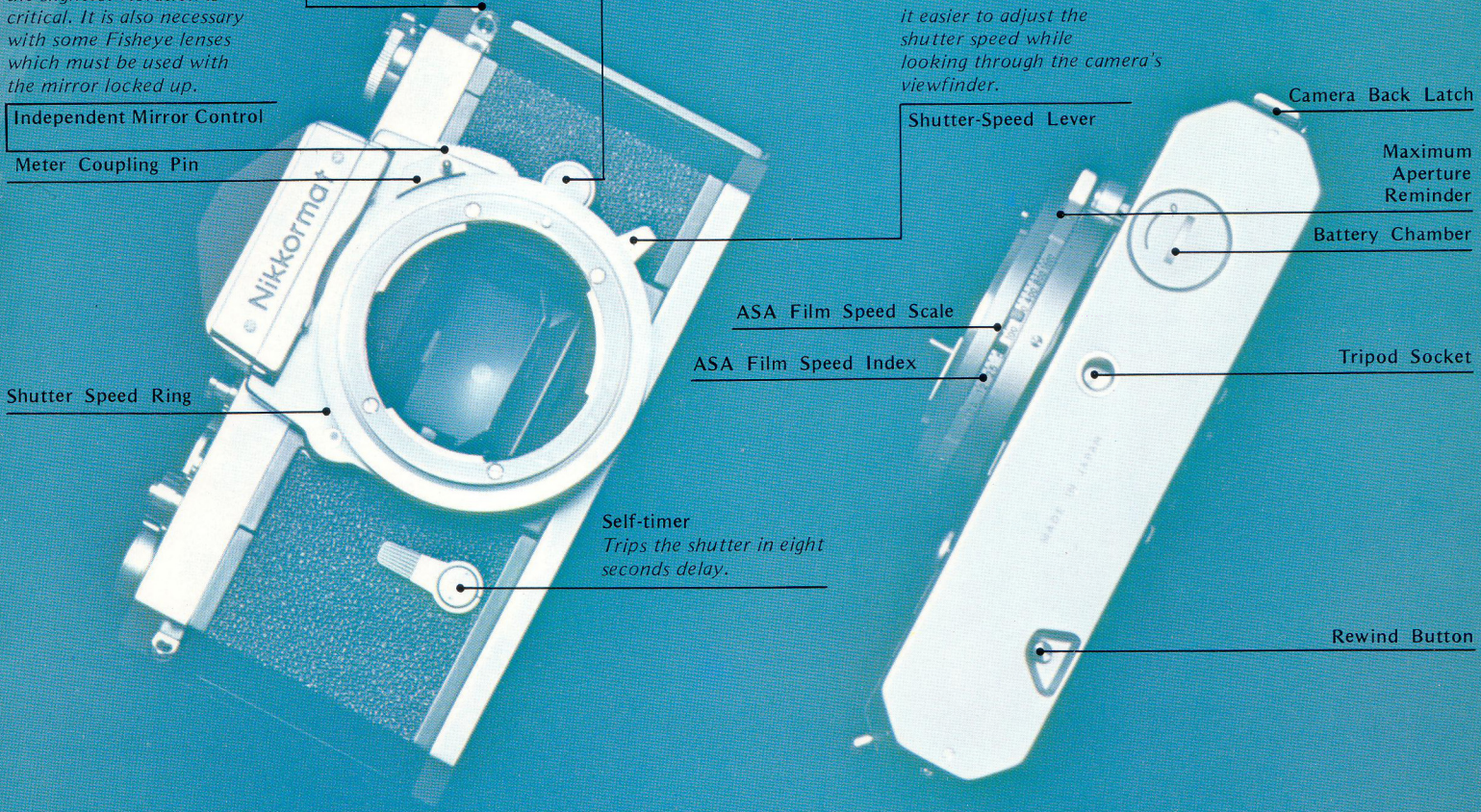
*Trips the shutter in eight seconds delay.*

**Rewind Button**

**Independent Mirror Control**

**Meter Coupling Pin**

**Shutter Speed Ring**



# Easy-to-handle features that free your imagination

## Depth-of-field preview

*By pressing a button conveniently located near the shutter release button, you can preview depth of field and make any needed adjustments before you shoot.*

## Depth-of-Field Preview Control

## One-stroke rapid film advance

*One smooth stroke of the Nikkormat's film-advance lever turns on the exposure meter, advances the film, cocks the shutter and operates the frame counter.*

## Quadruple-Action Lever

## Shutter Release Button

## Auto-Reset Frame Counter

## Film Plane Indicator

## Duplicate Meter Indicator

## Rapid rewind

*The rapid rewind crank unfolds to allow quick, smooth rewinding of exposed film.*

## Film Rewind Crank

## Easy loading/unloading

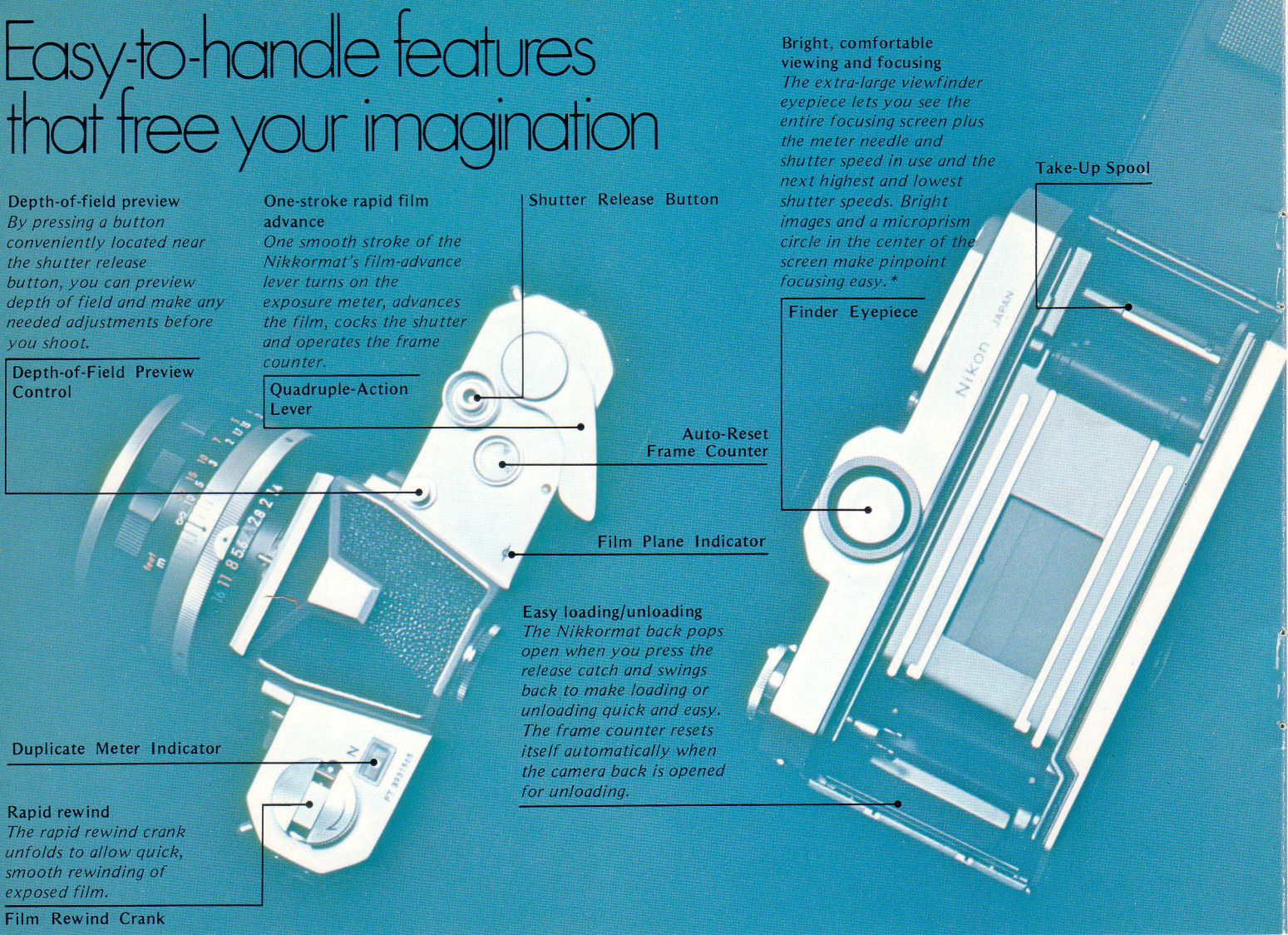
*The Nikkormat back pops open when you press the release catch and swings back to make loading or unloading quick and easy. The frame counter resets itself automatically when the camera back is opened for unloading.*

## Bright, comfortable viewing and focusing

*The extra-large viewfinder eyepiece lets you see the entire focusing screen plus the meter needle and shutter speed in use and the next highest and lowest shutter speeds. Bright images and a microprism circle in the center of the screen make pinpoint focusing easy.\**

## Finder Eyepiece

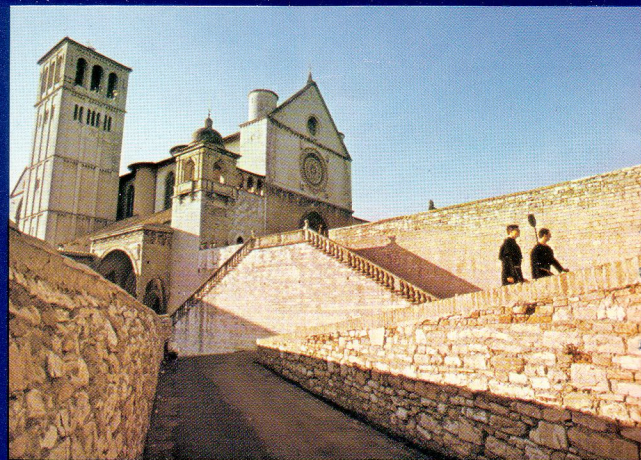
## Take-Up Spool





# Over 40 different lenses to choose from

When you own a Nikkormat, you own the heart of the world's most comprehensive system for 35mm photography. It includes more than 40 lenses, unmatched for speed, resolution and color fidelity. Ranging from 6mm fisheye to 2000mm super-telephoto, the Nikkor family also includes five zooms plus special-purpose optics for close-ups, flash photography, microfilming, perspective correction and medical and scientific research. Whether you want to add a second lens to increase your vacation picture-taking enjoyment, or need just the right optic for a professional assignment, Nikon makes it.



*T. Arai*

Wideangle

Telephoto

Zoom



*J. Cooke*



### **Wideangle lenses**

With their wider picture angle and greater depth of field, wideangle lenses let you take rapid candid shots with less worry about focusing or even viewing. They are also useful for architectural photography or for working in confined spaces where it is impossible to move back from the subject.

Advanced photographers like to use the exaggerated perspective known as wideangle distortion to get special creative effects.

### **Normal lenses**

Best for all-around photography. Nikkor normal lenses feature close focusing and high speeds which make them ideal choices for available-light photography.

### **Telephoto lenses**

Besides bringing distant subjects up close, telephoto lenses have shallow depth of field which can be used to throw unwanted background detail out of focus and make the main subject stand out dramatically. Medium telephotos are ideal for portraits, longer ones for sports, theater or wildlife photography. Even the 200mm and 300mm Nikkors are light enough to hand-hold easily. And the Reflex-Nikkors have catadioptric lens systems which make them far lighter and more compact than ordinary long telephotos.

### **Zoom lenses**

Zoom lenses offer the advantages of a wide range of focal lengths without interchanging lenses. Once focused, they remain in sharp focus throughout the entire zooming range. Except for the 50-300mm zoom lens, one adjustment ring provides complete control — twist to focus and push-pull to zoom.



## Special lenses

### PC-Nikkor 35mm f/2.8

This lens brings view camera versatility to 35mm photography by eliminating the converging lines that make buildings seem to tilt backwards when they are shot with a conventional wideangle lens. The PC-Nikkor shifts in any direction to give you the perspective control you need to shoot a grove of pines or the bold facade of a cathedral.

### Micro-Nikkor-P Auto 55mm f/3.5

Originally designed for close-ups but equally outstanding for general photography, this lens focuses continuously from infinity to a 1:2 reproduction ratio. Add the M2 ring which is included with the lens, and close-up capability reaches all the way down to life-size (1:1 reproduction ratio).

### Medical-Nikkor Auto 200mm f/5.6

A complete close-up system for medical, scientific and industrial photography, the Medical-Nikkor has a built-in electronic flash and focusing light and is supplied with six auxiliary lenses for reproduction ratios from 1:15 to 3:1.

### GN Auto Nikkor 45mm f/2.8

Takes the work and guesswork out of flash photography with a guide number coupling system. Once the lens is adjusted

for film speed and flash unit guide number, the aperture diaphragm opens and closes automatically as you focus. There is no need to calculate the lens aperture and reset it manually each time the focused distance changes.

### Fisheye-Nikkors

These remarkable, ultra-wideangle lenses are probably best known for the way they turn an ordinary subject into an eye-stopping composition. But they have many applications in commercial, industrial, architectural and scientific photography as well. Only Nikon offers five different fisheyes, each with its own special features. Except for the OP Fisheye-Nikkor, all are equidistant projection lenses.

**Fisheye-Nikkor 7.5mm f/5.6:** Light and compact, the lens has a 180° picture angle. It is used with the camera's reflex mirror locked up and with a special auxiliary viewfinder.

**Fisheye-Nikkor Auto 8mm f/2.8:** The newest Nikkor fisheye and the easiest to use thanks to its automatic diaphragm and a larger maximum aperture. An auxiliary finder is unnecessary — you can see the entire 180° picture field through the camera viewfinder without locking up the mirror. Has a set of five built-in filters.

**Fisheye-Nikkor 6mm f/5.6:** A light, compact fisheye lens with 220° picture angle — the widest available. The lens actually “sees” slightly behind itself. Supplied with auxiliary viewfinder.

**Fisheye-Nikkor Auto 6mm f/2.8:** Also features a 220° picture angle but with automatic diaphragm and a larger maximum aperture. No need to lock up the mirror.

**OP Fisheye-Nikkor 10mm f/5.6:** An orthographic projection fisheye with a 180° picture angle for scientific, architectural, engineering and industrial applications. Must be used with mirror locked up. Auxiliary finder provided.





*R. Böck*

# Explore the close-up world with your Nikkormat FTN

For sheer excitement, close-up photography is hard to beat. And with the Nikkormat FTN, it's easy to capture breathtaking close-up images in prints or slides. A virtual system-within-a-system of close-up accessories lets you choose the equipment you need to explore the minute, dramatic world that lies all around us.

## Close-up Attachment Lenses

Compact and easy to use, the attachment lenses screw onto any Nikkor lens with a 52mm threaded mount. Three lenses are available for use separately or in combination, depending on the desired reproduction ratio.

## Extension Ring E2

Fits between the camera and lens for photographing subjects which are too close for the attachment lenses. Can be used with any Nikkor lens from 28mm to 200mm.

## Extension Ring Set K

Offers greater versatility than the Extension Ring E2. The set of five rings can be used independently or in various combinations to get a variety of magnifications. Comes with its own leather case.

## Bellows Focusing Attachments

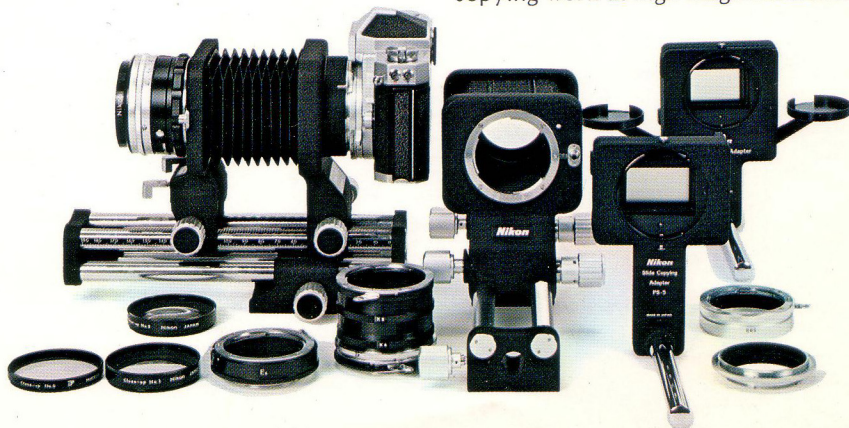
Used with nearly the entire range of Nikkor lenses, models PB-4 and PB-5 offer higher reproduction ratios than extension rings, can be used to make close-ups larger than life-size.

## Slide-copying adapters PS-4 and PS-5

Used with Bellows Focusing Attachments models PB-4 and PB-5 for duplicating 35mm transparencies. Sections of transparencies can be blown up to full 35mm format with the PB-4.

## Bellows-Nikkor 105mm f/4 lens

Designed exclusively for use with bellows attachments, this lens focuses continuously from infinity to a 1.3X magnification when used with the Bellows Focusing Attachment PB-4 or PB-5. Also available are the BR-2 Macro Adapter Ring, which allows Nikkor lenses with 52mm threaded mounts to be mounted in reverse position on the bellows for macrophotography; the BR-3 Connecting Adapter which connects the slide copying adapter to the rear of the lens; and the Repro-Copy Outfit Model PF which provides the firm camera support necessary for critical copying work at high magnifications.



# Accessories that further extend the Nikkormat's versatility

## Right-Angle Viewing Attachment

The eyepiece frame is removed and the attachment mounted in its place. Useful for waist-level or overhead shooting, photomicrography, close-ups, etc.

## Nikon Speedlight Unit

This advanced electronic flash unit provides constant light output and even illumination. It offers a choice of power sources and ringlight units for close-up photography.

## BC-7 Flash Unit

Lightweight and compact, the unit fits into the accessory shoe. It has a collapsible-type reflector and click-stop swivel for direct or bounce flash with provision for automatic changeover socket for bayonet, miniature base or AG-1 bulb.

## Accessory Shoe

Fits between the viewfinder housing and eyepiece frame for mounting the BC-7 flash unit or auxiliary finder.

## Nikkor Filters

Made of optical glass and hard-coated and finely polished, these filters are made to complement the fineness of Nikkor optics. Complete parallel flatness is assured. Also available are the Eyesight Correction Lenses, Rubber Eyecup, Pistol Grip, Cable Release, Panorama Head, Lens Hoods, Rear Lens Caps, Body Cap, Lens Cases in leather, plastic or wood, and a complete line of camera and fitted compartment cases.

For further details on various accessories and attachments mentioned in this brochure, please refer to the Nikon F System Catalog.



**WIDEANGLE**

Lens	Dia. Action	Min. Dia.	Pic. Angle	Cl. Focus	Filter	Hood
15mm f/5.6	automatic*	f/22	110°	0.9' (0.3m)	built-in	—
20mm f/3.5	automatic*	f/22	94°	1' (0.3m)	72mm	screw-in
24mm f/2.8	automatic*	f/16	84°	1' (0.3m)	52mm	screw-in
28mm f/2	automatic*	f/22	74°	1' (0.3m)	52mm	screw-in
28mm f/3.5	automatic*	f/16	74°	2' (0.6m)	52mm	screw-in
35mm f/1.4	automatic*	f/22	62°	1' (0.3m)	52mm	screw-in
35mm f/2	automatic*	f/16	62°	1' (0.3m)	52mm	screw-in
35mm f/2.8	automatic*	f/16	62°	1' (0.3m)	52mm	screw-in

**NORMAL**

50mm f/1.4	automatic*	f/16	46°	2' (0.6m)	52mm	screw-in snap-on
50mm f/2	automatic*	f/16	46°	2' (0.6m)	52mm	screw-in snap-on
55mm f/1.2	automatic*	f/16	43°	2' (0.6m)	52mm	screw-in snap-on

**TELEPHOTO**

85mm f/1.8	automatic*	f/22	28°30'	3.5' (1m)	52mm	screw-in
105mm f/2.5	automatic*	f/32	23°20'	3.5' (1m)	52mm	screw-in o snap-on
135mm f/2.8	automatic*	f/22	18°	5' (1.5m)	52mm	built-in
135mm f/3.5	automatic*	f/32	18°	5' (1.5m)	52mm	screw-in o snap-on
180mm f/2.8	automatic*	f/32	13°40'	6' (1.8m)	72mm	built-in
200mm f/4	automatic*	f/32	12°20'	10' (3m)	52mm	built-in
300mm f/4.5	automatic*	f/22	8°10'	13' (4m)	72mm	built-in
400mm f/4.5	automatic†	f/22	6°10'	16' (5m)	122mm	built-in
400mm f/5.6	automatic*	f/32	6°10'	16' (5m)	72mm	built-in
600mm f/5.6	automatic†	f/22	4°	35' (11m)	122mm	built-in
800mm f/8	automatic†	f/22	3°	60' (18m)	122mm	built-in
1200mm f/11	manual†	f/64	2°	130' (40m)	122mm	built-in

**REFLEX**

500mm f/8	—	—	5°	13' (4m)	39mm	o screw-in
1000mm f/11	—	—	2°30'	25' (8m)	built-in	o slip-on
2000mm f/11	—	—	1°10'	∞-60' (∞-20m)	built-in	—

**ZOOM**

Lens	Dia. Action	Min. Dia.	Pic. Angle	Cl. Focus	Filter	Hood
43mm-86mm f/3.5	automatic*	f/22	53° to 28°30'	4' (1.2m)	52mm	screw-in
50mm-300mm f/4.5	automatic*	f/22	46° to 8°10'	8.5' (2.5m)	95mm	screw-in
80mm-200mm f/4.5	automatic*	f/32	30°10' to 12°20'	6' (2m)	52mm	screw-in
85mm-250mm f/4	automatic*	f/16	28°30' to 10°	13' (4m)	series 9	o screw-in
200mm-600mm f/9.5	automatic	f/32	12°20' to 4°10'	13' (4m)	series 9	o screw-in

**SPECIAL**

6mm f/2.8 Fisheye	automatic*	f/22	220°	0.9' (0.25m)	built-in	—
6mm f/5.6 Fisheye	manual+	f/22	220°	fixed focus	built-in	—
7.5mm f/5.6 Fisheye	manual+	f/22	180°	fixed focus	built-in	—
8mm f/2.8 Fisheye	automatic*	f/22	180°	1' (0.3m)	built-in	—
10mm f/5.6 OP Fisheye	manual+	f/22	180°	fixed focus	built-in	—
35mm f/2.8 PC	preset	f/32	62°	1' (0.3m)	52mm	screw-in
45mm f/2.8 GN	automatic*	f/32	50°	3' (0.8m)	52mm	screw-in
55mm f/3.5 Micro-P	automatic*	f/32	43°	0.79' (0.241m)	52mm	screw-in
105mm f/4 Bellows	preset	f/32	23°20'	—	52mm	snap-on or screw-in
200mm f/5.6 Medical	automatic	f/45	12°20'	3:1	—	—

**Notes on lens chart**

- \* ... Couples to meter
- + ... Supplementary viewfinder necessary
- † ... Focusing Unit necessary
- o ... Lens hood supplied with corresponding lens

**Abbreviations used in lens chart**

- Dia. Action ... Diaphragm Action
- Min. Dia. ... Minimum Diaphragm
- Pic. Angle ... Picture Angle
- Cl. Focus ... Closest Focus (dual calibration)



**Nikon Inc.**

Garden City, New York 11530: Subsidiary of  
Ehrenreich Photo-Optical Industries, Inc.

Printed in Japan

Code No. 8070-04 KEC