

# WILSONWERKS ARCHIVES

This camera manual is for reference and historical purposes, all rights reserved.

This cover page is copyrighted material. This document may not be sold or distributed without the express consent of the publisher.

©2008 wilsonwerks Llc

# Nikon Cameras

## Nikon Photo Contest International



Each year since 1969,  
Nikon's prestigious contest gives  
amateur and professional photographers the opportunity  
to match skills with fellow photographers from around the globe.  
Entry forms and rules are available from  
your local Nikon distributor.



**Nikon®**  
We take the world's  
greatest pictures.®

8 best choices for photographic excellence.



© Nikon Inc., 1989.  
Nikon Inc., 623 Stewart Avenue, Garden City, New York 11530 U.S.A.

Printed in U.S.A. (8908-D)

# The Nikon F4

## PROFESSIONAL



- Top-of-the-line professional-quality camera.
- Rugged and durable body to withstand the toughest demands.
- Matrix Metering for correct exposure in any lighting situation, automatically.
- Matrix Balanced Fill-Flash with Cybernetic Sync for balanced exposure of both foreground subject and background, automatically. • Choice of three exposure metering systems – Matrix, Center-Weighted and Spot Metering.
- Top shutter speed of 1/8000 sec. and flash sync up to 1/250 sec.
- Ultra-fast, most responsive autofocus system; operates in light as dim as EV minus 1. • Precise manual focusing with the assistance of electronic rangefinder and lenses with maximum aperture of f/5.6 or faster.
- Focus tracking function ensures sharply focused images when shooting a moving subject.
- Tungsten-alloy shutter balancer eliminates camera shake caused by shutter curtain movement.
- Top film advance speed of 5.7 frames per second.
- Multi-Meter Finder with high eyepoint of approx. 22mm and virtually 100% frame coverage.
- Optional Speedlight SB-24 offers rear-curtain sync, repeating flash and more.
- Four finders, 13 screens, three types of power sources and three camera backs – all interchangeable.
- Optional Multi-Control Back MF-23 or MF-24 allows interval-timer, exposure delay, long time exposure, auto bracketing, freeze focus and more.
- Nikon lens and system compatibility.

### SPECIFICATIONS

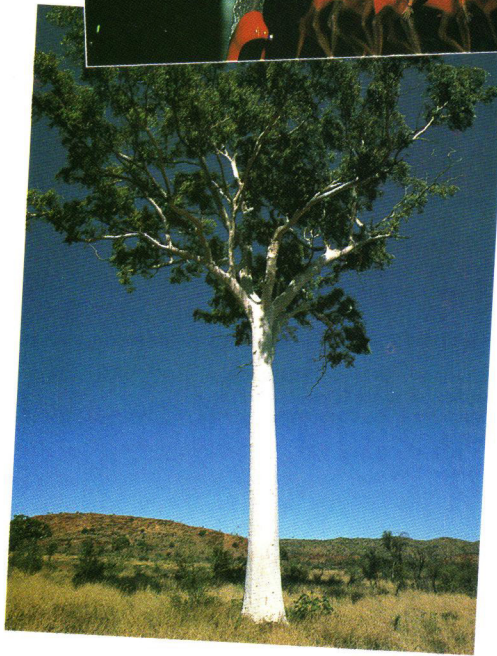
**Exposure control** Manual, programmed (high speed/normal), shutter-priority and aperture-priority

**Shutter speeds** Controlled from 1/8000 to 30 sec. steplessly in PH, P or A mode; set from 1/8000 to 4 sec. in one EV steps in M or S mode; B, T and X (1/250 sec.)

**Exposure metering** Matrix Metering, Center-Weighted Metering, Spot Metering; EV0 ~ 21 at ISO 100 with f/1.4 lens (EV2 ~ 21 with Spot Metering)

**Dimensions (W × H × D)** 6.6" × 5.4" × 3.0" (with High Speed Battery Pack MB-21), 6.6" × 4.6" × 3.0" (with Battery Pack MB-20)

**Weight (body only)** Approx. 45.1 oz. (with High Speed Battery Pack MB-21), Approx. 38.4 oz. (with Battery Pack MB-20)





# Nikon *N8008*

## A Fusion of Art and Science



- Nikon's exclusive Matrix Metering for optimum exposure every time, even in difficult lighting situations.
- Matrix Balanced Fill-Flash with Cybernetic Sync enables precise and balanced exposure for both foreground subject and background, automatically.
- Top shutter speed of 1/8000 sec., slow speeds to 30 sec. and flash sync up to 1/250 sec.
- Advanced autofocus system; operates in light as dim as EV minus 1.
- 75/25 Center-Weighted Metering for user-creative control.
- Precise manual focusing with the aid of electronic rangefinder.
- Flexible program allows the photographer to change the combination of automatically set shutter speed and aperture.
- Continuous high-speed film advance up to 3.3 frames per second.
- Command Input Control Dial and LCD panel.
- Optional Speedlight SB-24 allows rear-curtain sync, repeating flash, and more.
- Optional Multi-Control Back MF-21 allows interval-timer, long time exposure, auto bracketing and freeze focus.
- Nikon lens and system compatibility.

### SPECIFICATIONS

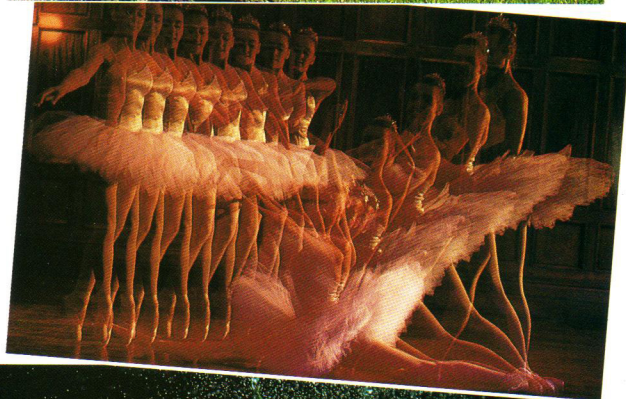
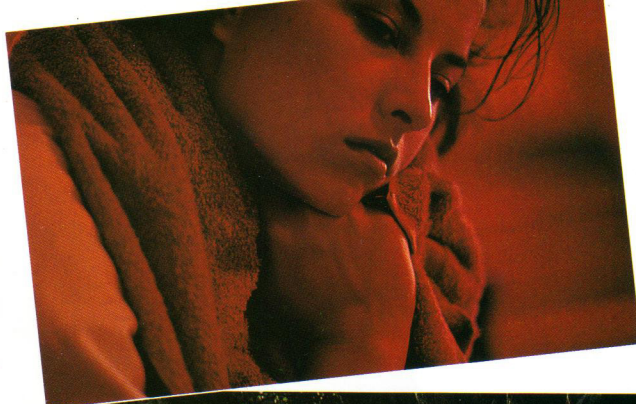
**Exposure control** Programmed (dual/normal/high speed), shutter-priority, aperture-priority and manual

**Shutter speeds** From 1/8000 to 30 sec.; stepless on P<sub>D</sub>, P, PH or A; lithium niobate oscillator-controlled speeds set in one EV steps on S or M; B

**Exposure metering** Matrix Metering, Center-Weighted Metering; EV0 ~ 21 at ISO 100 with f/1.4 lens

**Dimensions (W × H × D)** 6.0" × 4.0" × 2.6"

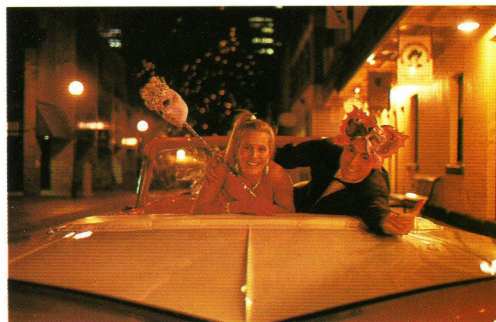
**Weight (body only)** Approx. 24.5 oz.





# Nikon N4004S

## Totally Automatic SLR Quality



Superior Autofocus with the World's Most AF Sensors



- Decision Master System integrates advanced camera and lens computers for fully automatic control of all operations.
- Advanced AM200, Nikon's newly developed autofocus optical module, with 200 CCDs (Charge-Coupled Devices) detects minute details – even in dim candlelight.
- Multi-sensor metering works better for all

lighting, including difficult backlighting and scenes with the sun in the picture, automatically

- Built-in auto TTL (through-the lens) flash assures accurate flash exposures.
- Balanced fill-flash assures correct exposure of main subject and background – automatically!
- Dual-program auto exposure sets shutter speed and lens aperture for optimum exposure according to lens focal length.
- Creative exposure options: aperture-priority auto, shutter-priority auto, automatic exposure lock, and manual exposure.
- Automatic film operation, from loading to advance to rewind.
- Automatic film speed setting with DX-coded film of ISO 25 ~ 5000.

### SPECIFICATIONS

**Exposure control** Program auto, shutter-priority auto, aperture-priority auto and manual exposure modes

**Shutter speeds** Stepless speeds from 1/2000 to 1 sec. on program auto and aperture-priority auto; lithium niobate oscillator-controlled discrete speeds from 1/2000 to 1 sec. on shutter-priority auto and manual; B

**Exposure metering** Multi-sensor metering (in program, shutter-priority and aperture-priority modes); Center-Weighted exposure measurement (in manual exposure mode or when using the AE-L button in auto exposure mode)

**Dimensions (W × H × D)** 6.0" × 4" × 2.6"

**Weight (body only)** Approx. 22.9 oz.



Built-in Auto TTL Flash with Balanced Fill-Flash Capability



Advanced Auto Exposure with Unique Multi-Sensor Metering



# Nikon N2000

## The Integral-Motor, Multi-Mode Nikon.



- Auto film winding at up to 2.5 frames per second.
- Four exposure modes: Dual Program exposure (normal and high-speed); Aperture-priority auto exposure; Manual exposure.
- Automatic film loading, automatic ISO setting, automatic film advance to the first frame.
- Programmed TTL auto flash with SB-16B, SB-20, SB-22, SB-23 or SB-24.
- Exposure compensation (dial provided).
- Automatic Exposure lock.
- Audible warning helps prevent misuse.
- Newly developed dimming-resistant Nikon Briteview screen.
- Electronically controlled shutter with speeds up to 1/2000 second.

### SPECIFICATIONS

**Exposure control** Programmed (normal and high-speed; P, P HI), aperture-priority automatic (A), and manual (M)

**Shutter speeds** Stepless 1/2000 to 1 sec. on P and A; lithium niobate oscillator-controlled 1/2000 to 1 on manual; B

**Exposure metering** Center-Weighted, TTL full-aperture metering; EV1 ~ 19 at ISO 100 with f/1.4 lens

**Dimensions (W × H × D)** 5.8" × 3.8" × 2"

**Weight (body only)** 20 oz.

# Nikon F3 Series

## In a word, state-of-the-art.



### F3HP

- Professional-quality camera.
- Responsive, accurate aperture-priority automatic exposure control; quartz oscillator assures precise manual shutter speed timing from 8 to 1/2000 sec.
- Viewfinder with virtually 100% picture coverage shows you the exposure information you need at a glance... whether you use eyeglasses or not, or even with your eye up to 1 inch away.
- Complete interchangeability of six finders, 22 bright focusing screens and camera backs including the MF-4 250-exposure Film Back, the MF-14 Data Back, the MF-6B and the MF-17 250-exposure Data Back.
- Dedicated, direct, through-the-lens (TTL) automatic flash metering capability with Nikon Speedlights.
- Accepts the MD-4 Motor Drive which fires at up to six frames per second
- Viewfinder exposure readout consists of easy-to-see Liquid Crystal Display (LCD) of shutter speed, ADR (Aperture Direct Readout) aperture number in use and flash ready-light.

### F3/T

- Offers all the features of the F3HP in a tough body with a titanium outer-shell; one of the world's strongest metals, titanium gives added protection to the camera's high-eyepoint viewfinder, camera top and bottom, and the entire camera back.

### SPECIFICATIONS

**Exposure control** Aperture-priority automatic or manual

**Shutter speeds** Stepless 1/2000 to 8 sec. on auto; quartz-timed, 1/2000 to 8 sec. on manual; X (1/80 sec.), M60 (mechanical 1/60 sec.), B (long exposure) and T (time exposure)

**Exposure metering** Center-Weighted, TTL full-aperture metering; EV1 ~ 18 at ASA/ISO 100 with f/1.4 lens

**Dimensions (W × H × D)** 5.8" × 4" × 2.7"

**Weight (body only)** 26.8 oz. (F3HP); 26 oz. (F3/T)

# Nikon FM2

The traditionalist's choice.



- Mechanically controlled aluminum alloy shutter curtains provide top speed of 1/4000 sec. and peak flash sync speed of 1/250 sec.
- Full manual operation and mechanical control – the FM2 mechanical shutter works without batteries at all speeds.
- Ultra-wide film speed range of ASA/ISO 12 to 6400.
- Three bright clear matte interchangeable focusing screens allow you to pinpoint-focus even in dim light.
- Sequential shooting of up to 3.2 frames per second with Motor Drive MD-12.
- Camera back interchangeable with MF-16 Data Back.

## SPECIFICATIONS

**Exposure control** Manual

**Shutter speeds** Mechanical 1/4000 to 1 sec.; plus B (long exposure)

**Exposure metering** Center-Weighted, TTL full-aperture metering; EV1 ~ 18 at ASA/ISO 100 with f/1.4 lens

**Dimensions (W × H × D)** 5.6" × 3.5" × 2.4"

**Weight (body only)** 19 oz.

# NIKONOS-V

With Auto, Manual and  
TTL flash exposure control.



- Underwater 35mm camera that works to a depth of 160 feet.
- Aperture-priority auto and manual exposure modes; plus "M90" for mechanical backup, and "B" for bulb.
- Automatic TTL flash control with optional Nikon SB-102 or SB-103.
- Synchro-sunlight or exposure compensation possible with SB-102 or SB-103. The SB-102 or SB-103 also enables TTL multi-flash capability with another SB-103 or SB-102 via Double Flash Bracket and Double Sync Cord.
- Complete underwater system includes optical underwater viewfinders, underwater frame finder, close-up outfits and Nikkor underwater/land-use lenses.

## SPECIFICATIONS

**Exposure control** Aperture-priority auto, or manual

**Shutter speeds** Stepless 1/1000 to 1/30 sec. on auto, quartz-timed 1/1000 to 1/30 sec. on manual; M90 (1/90 sec.) plus B

**Exposure metering** Center-Weighted, TTL light-intensity feedback metering; EV8 ~ 19 at ASA/ISO 100 with f/2.8 lens (from 1/30 sec. at f/2.8 to 1/1000 sec. at f/22)

**Dimensions (W × H × D)** 5.7" × 3.9" × 2.3"

**Weight (body only)** 15.5 oz.

Specifications and design are subject to change without notice.