

WILSONWERKS ARCHIVES

This camera manual is for reference and historical purposes, all rights reserved.

This cover page is copyrighted material. This document may not be sold or distributed without the express consent of the publisher.

©2008 wilsonwerks Llc

Polaroid



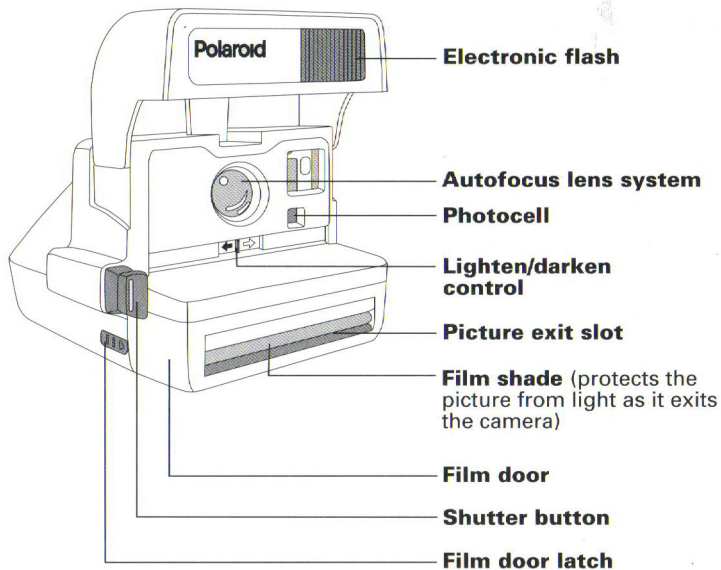
OneStep AutoFocus SE

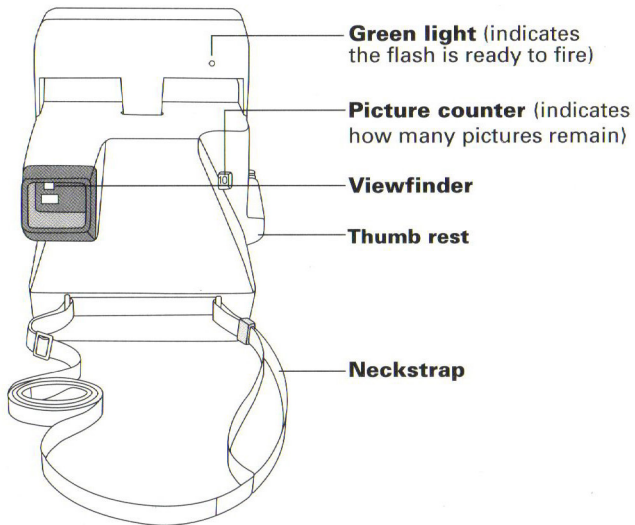
IMPORTANT SAFEGUARDS

As with any battery-operated equipment, observe these basic safety precautions:

- 1 FOLLOW ALL OF THESE INSTRUCTIONS.**
- 2 CLOSELY SUPERVISE CAMERA WHEN IT IS BEING USED BY OR NEAR CHILDREN.**
- 3 DO NOT USE CAMERA IF IT HAS BEEN DROPPED OR DAMAGED - UNTIL IT HAS BEEN EXAMINED AT AN AUTHORIZED POLAROID SERVICE CENTER.**
- 4 TO AVOID ELECTRICAL SHOCK HAZARDS, DO NOT DIS-ASSEMBLE CAMERA. SERVICE OR REPAIR WORK MUST BE DONE ONLY BY AN AUTHORIZED POLAROID SERVICE CENTER. INCORRECT REASSEMBLY CAN CAUSE ELECTRICAL SHOCK WHEN CAMERA IS USED AGAIN. DO NOT IMMERSE IN WATER OR OTHER FLUIDS.**

PLEASE KEEP THESE INSTRUCTIONS





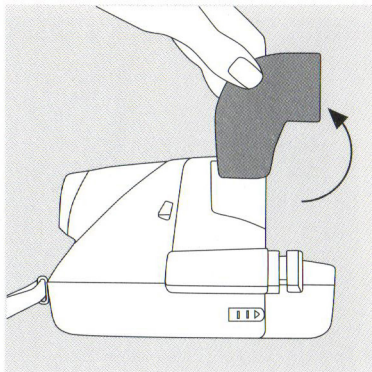
1 Raise the electronic flash

Grip the sides of the flash unit. Swing the flash unit up to snap it in place. The flash will fully charge automatically, in about 4 seconds, every time you raise the flash unit when there is film in the camera, or when you take a picture or touch the shutter button.

The flash is designed to be used for *every picture* — outdoors and indoors. This will provide you with the best instant pictures under most lighting conditions.

To save energy, the flash is designed to shut off automatically after 30 seconds, but will turn on as soon as you press the shutter button.

Note: When you are not using the camera, lower the flash unit. It will protect the lens and lock the shutter button.



2 Load the film

Use only Polaroid 600 instant color film.

Each film pack provides ten color pictures and contains a high-energy battery that powers both the camera and the electronic flash.

A film expiration date appears on the bottom of every film box. This date is your assurance that you are buying fresh film.

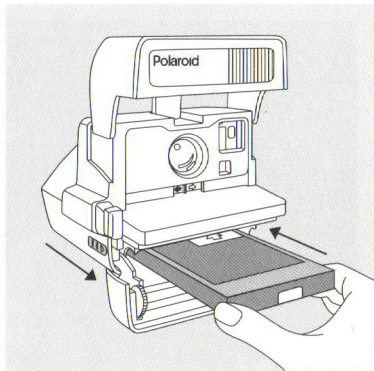
To load the film

Push the latch **forward** to open the film door. Hold the film pack by its edges only, as shown, and slide it all the way into the camera. Close the film door. As soon as it is closed, the camera will eject the film cover. The green light on the back of the camera will come on to show the flash is ready to fire.

To remove an empty film pack

Push the latch forward to open the film door.

Pull the colored tab on the film pack and remove the film from the camera.



3 Take the picture

Hold the camera

Grip the camera in the palm of your left hand **(a)**. Or, if it is more comfortable, place the fingers of your left hand over the top of the viewfinder and your thumb under the camera **(b)**.

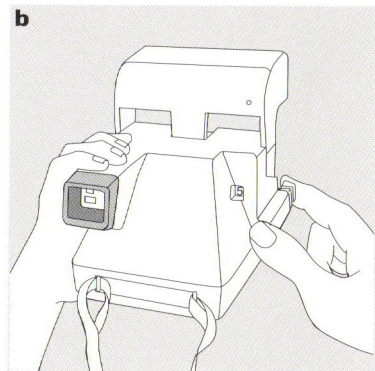
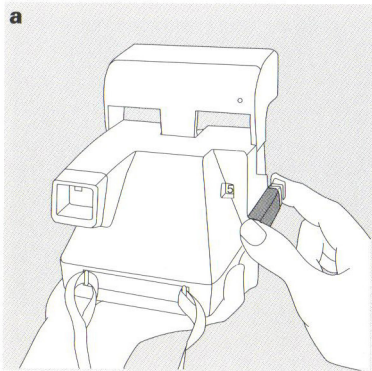
Place your right thumb on the thumb rest, your index finger on the shutter button, and curl your other fingers into your palm.

Be sure to keep your fingers away from the picture exit slot.

Position your subject

For best results *indoors*, your subject should be from 2 to 11.5 ft. away and in front of a light-colored background.

Outdoors, your subject should be at least 2 ft. away. Keep the sun behind you or at your side. Avoid having the sun directly overhead. Also, make sure there is nothing between your camera and subject.



The lighten/darken control

Press the shutter button

Be sure the green flash-ready light is on. If not, press the shutter button part way to charge the flash. Frame your subject in the viewfinder and press the shutter button. The camera will eject the picture and the flash will immediately recharge.

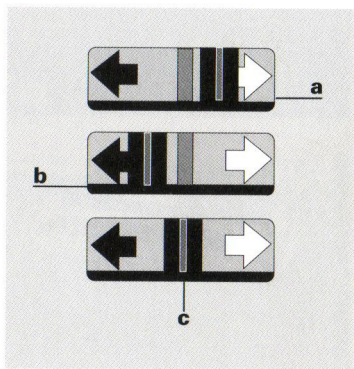
Use this control only when you want to reshoot a picture to make it lighter or darker.

To take a lighter picture, slide the control towards the white arrow (a) until you feel it stop.

To take a darker picture, slide the control towards the black arrow (b) until you feel it stop.

A red bar will remind you that the control is not in the center position.

Note: Return the control to the center position when you have finished reshooting (c).

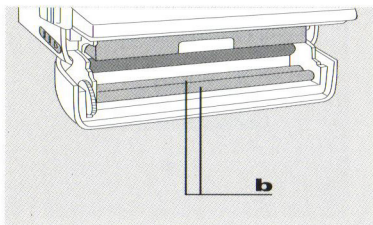
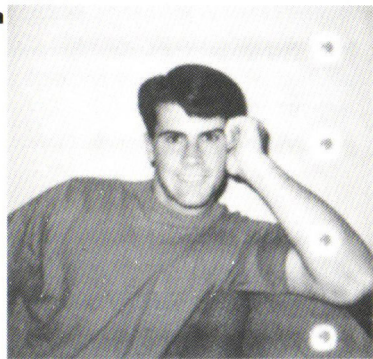


Trouble-free picture-taking

Keep the developer rollers clean

Dirty rollers can cause a repeated spot or bar pattern in the picture (a). The developer rollers (b) are located inside the film door. If there is film in the camera, open the door in dim light.

Clean the rollers with a damp, lint-free cloth.



If the camera does not eject the picture

Check the picture counter. When the film pack is empty, the flash will charge but you cannot take a picture.

The flash is ready to fire when the green light on the back of the camera is on.

Handling

During the first 60 seconds of development, handle the print gently; hold it only by its wide white border and do not wave or bend it.

Temperature

When the temperature is below 55°F (13°C), keep the camera and film warm. Immediately place the developing picture in a warm pocket for at least a minute being careful not to bend it. See the film box for further temperature information.

Lens

It is important to avoid touching the lens. To remove dust or fingerprints, breathe on the lens and wipe it gently with a clean, soft facial tissue.

Do not use silicone-treated eyeglass tissues.

Picture tips

- Always aim the camera at your main subject.
- Keep the sun behind you or at your side; avoid having the sun directly overhead.

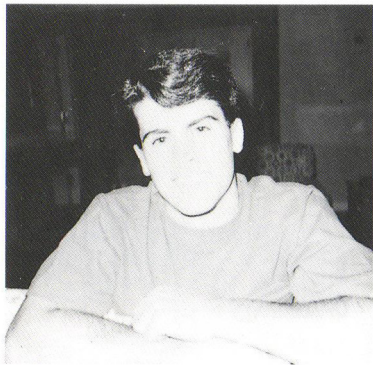
Pictures too light

Cause

- Dark background/uneven lighting
- Background too far from subject
- Wrong lighten/darken control setting

Solution

- Avoid dark backgrounds; subject and background should be in even lighting.
- Place subject near a brightly colored background.
- Check lighten/darken control setting.



Pictures too dark

Cause

- Subject too far from camera or beyond flash range
- Bright light or reflective surface behind subject
- Background too far from subject
- Wrong lighten/darken control setting
- Camera sees object in front of subject

Solution

- Stay within 11.5 ft. flash range; move in close: 4 ft. from subject is best for pictures of people.
- Avoid bright lights (lamps, windows) and reflective areas behind your subject; eliminate reflections by standing slightly to one side of subject and taking picture at an angle.
- Place subject near a brightly colored background.
- Check lighten/darken control setting.
- Make sure there is nothing between your camera and subject.



Blurred picture

Cause

- Flash not used in dim light
- Subject too close
- Camera or subject motion
- Fingerprint on lens

Solution

- Always use flash indoors; use flash outdoors in shade, at dusk or on overcast days.
- Position subject at least 2 ft. from camera.



- Depress shutter button smoothly and keep finger on shutter button until all motor noise stops; keep subject and camera still.
- See lens cleaning instructions.

Incompletely developed picture

Cause

- Area containing the developer packets was damaged before film was loaded

Solution

- Hold film pack by edges and slide all the way into camera; do not remove film from its box until you are ready to load camera.



Full lifetime warranty

U. S. A. offer only

If this camera proves to be defective, we will, at your option either replace or repair it without charge for as long as you own the camera (original owners only). See *Your warranty options*. To obtain warranty service, please call Polaroid at the toll-free number listed or write to the Polaroid Customer Care Center, 201 Burlington Road, Bedford, Massachusetts 01730.

This warranty does not cover damage caused by accident, misuse, or tampering with the camera, and a charge will be made for such repairs.

This warranty gives you specific legal rights, and you may also have other rights, which vary from state to state. This warranty excludes all consequential damages. Some states do not allow the exclusion of consequential damages so the foregoing exclusion may not apply to you.

Your warranty options:

Replacement: You can choose to receive a replacement camera at no charge. If the failure occurs within 90 days of the purchase date, you

can return the camera to any participating Polaroid dealer and you will receive a new camera. If the failure occurs after that period, call Polaroid at the toll-free number listed and we will ship you a refurbished camera of equal or better value. Replacement will be made 3-5 business days from the receipt of your camera.

Repair: Call the number listed for the address of the nearest authorized Polaroid repair location. Please allow 3 to 5 weeks from the receipt of your camera for the repair.

For assistance, in the U.S.A. call 1-800-343-5000 Monday - Friday, 8 a.m. to 8 p.m., Eastern Time.

Picture Guarantee

We are so sure you will be happy with your pictures that we guarantee complete satisfaction.

If you are not pleased with any picture you take, use Polaroid Picture Guarantee coupons to receive free replacement film. To receive your book of coupons, simply fill out and return the Registration card.